



SZABO SCANDIC

Part of Europa Biosite

Produktinformation



Forschungsprodukte & Biochemikalien



Zellkultur & Verbrauchsmaterial



Diagnostik & molekulare Diagnostik



Laborgeräte & Service

Weitere Information auf den folgenden Seiten!
See the following pages for more information!



Lieferung & Zahlungsart

siehe unsere [Liefer- und Versandbedingungen](#)

Zuschläge

- Mindermengenzuschlag
- Trockeneiszuschlag
- Gefahrgutzuschlag
- Expressversand

SZABO-SCANDIC HandelsgmbH

Quellenstraße 110, A-1100 Wien

T. +43(0)1 489 3961-0

F. +43(0)1 489 3961-7

mail@szabo-scandic.com

www.szabo-scandic.com

[linkedin.com/company/szaboscandic](https://www.linkedin.com/company/szaboscandic) 

Data Sheet

PKM2

Human, recombinant, N-terminal His tag

Catalog #: 50295

Lot#: 100928

Con.: 2.58 mg/ml

Formulated in: 40 mM Tris-HCl, pH 8.0, 110 mM NaCl, 2.2 mM KCl, 200 mM imidazole, 20% glycerol, and 3 mM DTT.

Stability: >6 months at -80°C

References:

1. Chen, J., *et al. Oncogene* (2011) *in press*.
2. Wong T.S. *et al., Int. J. Cancer* **123** (2), 251-257 (2008).
3. Christofk H.R. *et al., Nature* **452** (7184), 181-186 (2008).

Description:

Human Pyruvate kinase M2 (PKM2) also known as PKM1/M2, isoform a (GenBank Accession No. NM_002654) full length with N-terminal His tag, MW = 58.9 kDa, expressed in an *E. coli* expression system.

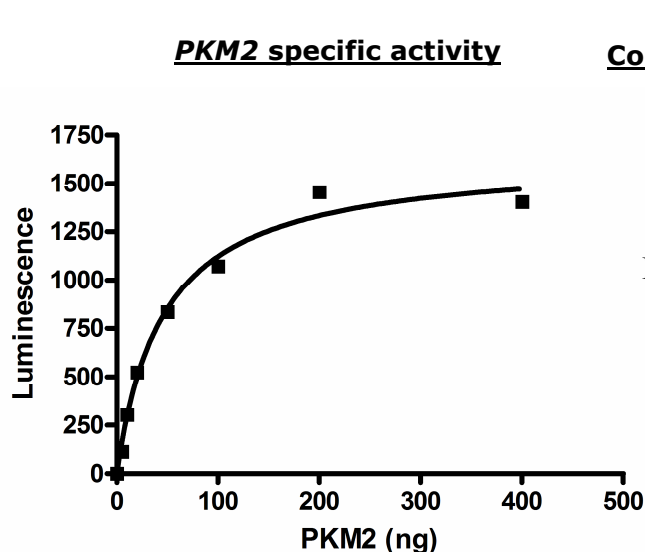
Specific Activity: 39 pmoles/min/μg.

A 50 μl PKM2 reaction is conducted in a buffer containing 50 mM Tris (pH 7.4), 10 mM MgCl₂, 50 mM KCl, 2 mM ADP, 10 mM phosphoenolpyruvate (PEP) at room temperature for 15 min. ATP production is detected using Kinase-Glo[®] Luminescent Kinase Assay Platform.

Application:

Useful for the study of enzyme kinetics, screening inhibitors, and selectivity profiling.

Quality Assurance

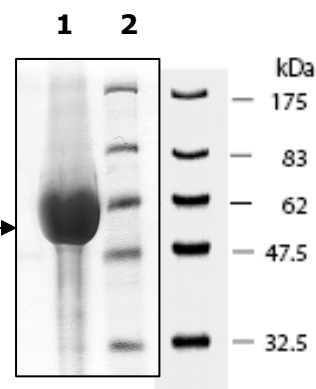


**10% SDS-PAGE
Coomassie staining**

Lane 1:
10 μg PKM2

Lane 2:
Protein Marker
BioLabs (#P7708L)

MW: 59 kDa.
Purity: >90%



OUR PRODUCTS ARE FOR RESEARCH USE ONLY. NOT FOR DIAGNOSTIC OR THERAPEUTIC USE.

To place your order, please contact us by Phone **1.858.829.3082** Fax **1.858.481.8694**

Or you can Email us at: info@bpsbioscience.com

Please visit our website at: www.bpsbioscience.com