



# SZABO SCANDIC

Part of Europa Biosite

## Produktinformation



Forschungsprodukte & Biochemikalien



Zellkultur & Verbrauchsmaterial



Diagnostik & molekulare Diagnostik



Laborgeräte & Service

Weitere Information auf den folgenden Seiten!  
See the following pages for more information!



### Lieferung & Zahlungsart

siehe unsere [Liefer- und Versandbedingungen](#)

### Zuschläge

- Mindermengenzuschlag
- Trockeneiszuschlag
- Gefahrgutzuschlag
- Expressversand

### SZABO-SCANDIC HandelsgmbH

Quellenstraße 110, A-1100 Wien

T. +43(0)1 489 3961-0

F. +43(0)1 489 3961-7

[mail@szabo-scandic.com](mailto:mail@szabo-scandic.com)

[www.szabo-scandic.com](http://www.szabo-scandic.com)

[linkedin.com/company/szaboscandic](https://www.linkedin.com/company/szaboscandic) 

## Data Sheet

### HRV 3C Protease

Human, recombinant, N-terminal His-GST-tags

**Catalog #:** 50319

**Lot #:** 131009-1

**Conc.:** 0.59 mg/ml

**Formulated in:** 50 mM Tris-HCl, pH 8.0,  
 150 mM NaCl, 1 mM EDTA, 1 mM TCEP,  
 50% glycerol

**Stability** Stable for at least 6 months when  
 stored at -20°C. Avoid freeze/thaw cycles.

**Reference(s):**

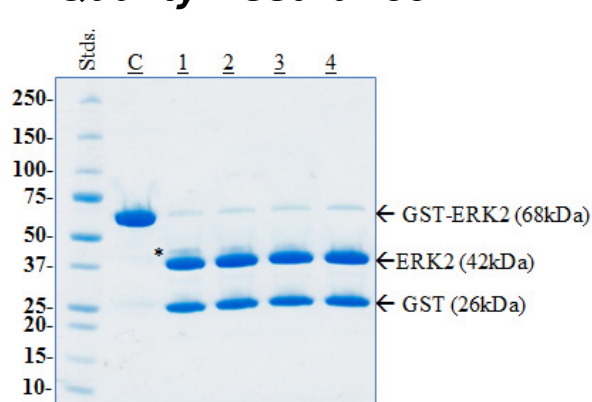
1. Timmer JC, Salvesen GS. *Methods Mol Biol.* 2011;**753:243-55.**

**Description:** Human rhinovirus 3C protease (HRV 3C Protease) with N-terminal His-GST-tags (can be easily removed by either Ni-chelating or Glutathione (GSH) resin along with the cleaved tag.), Recognizes the cleavage site of Leu-Glu-Val-Leu-Phe-Gln-Gly-Pro. Cleaves between Gln and Gly. MW = 47 kDa in *E. coli* expression system.

**Specific Activity:** 1 Unit of HRV 3C Protease cleaves >95% of 100 µg of target protein at 4°C for 16 hours. Assay Conditions: A 68 kDa GST-fusion protein (C) at 1 mg/ml is incubated with HRV3C Protease (\*) at a ratio of (1) 1:50, (2) 1:100, (3) 1:200, (4) 1:400 (w/w) in a buffer of 25 mM Tris-HCl, pH8.0, 150 mM NaCl, 14 mM β-mercaptoethanol at 4°C for 16 hours. The cleaved products are 42 kDa and 26 kDa.

**Application:** Useful for the study of enzyme kinetics, screening inhibitors, and selectivity profiling.

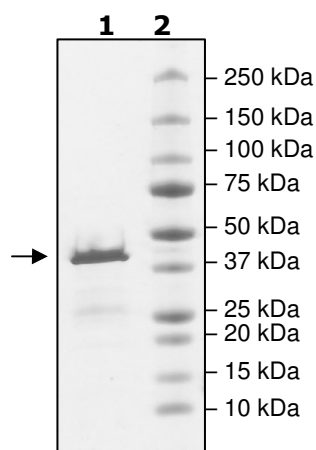
### Quality Assurance



**4-20% SDS-PAGE  
 Coomassie staining**

**Lane 1:**  
 2 µg 3C Protease  
**Lane 2:**  
 Protein Marker

**Purity:** ≥87%  
**MW:** 47 kDa



OUR PRODUCTS ARE FOR RESEARCH USE ONLY. NOT FOR DIAGNOSTIC OR THERAPEUTIC USE.

To place your order, please contact us by Phone **1.858.829.3082** Fax **1.858.481.8694**  
 Or you can Email us at: [info@bpsbioscience.com](mailto:info@bpsbioscience.com)  
 Please visit our website at: [www.bpsbioscience.com](http://www.bpsbioscience.com)



6044 Cornerstone Court West, Suite E  
San Diego, CA 92121  
Tel: 1.858.829.3082  
Fax: 1.858.481.8694  
Email: [info@bpsbioscience.com](mailto:info@bpsbioscience.com)

**Sequence:**

**M**HHHHHHSPILGYWKIKGLVQPTRLLEYLEEKYEEHLYERDEGDKWRNKKFELGLEF  
PNLPYYIDGDVKLTQSMARIYIADKHNMLGGCPKERAIEISMLEGAVLDIRYGVSRAYSK  
DFETLKVDFLSKLPEMLKMFEDRLCHKTYLNGDHVTHPDFMLYDALDVVLYMDPMCLD  
AFPKLVCFFKKRIEAIQIDKYLKSSKYIAWPLQGQWQATFGGGDHPPKSDIEGRGPNTEF  
ALSLLRKNIMTITTSKGEFTGLGIHDRVCVIPHTHAQPGDDVLVNGQKIRVKDKYKLVDP  
ENINLELTVLTLDRNEKFRDIRGFISEDLEGVDATLVVHSNNFTNTILEVGPVTMAGLIN  
LSSTPTNRMIRYDYATKTGQCGGVLCAATGKIFGIHVGGNGRQGFSAQLKKQYFVEKQ

OUR PRODUCTS ARE FOR RESEARCH USE ONLY. NOT FOR DIAGNOSTIC OR THERAPEUTIC USE.

To place your order, please contact us by Phone **1.858.829.3082** Fax **1.858.481.8694**  
Or you can Email us at: [info@bpsbioscience.com](mailto:info@bpsbioscience.com)  
Please visit our website at: [www.bpsbioscience.com](http://www.bpsbioscience.com)