



SZABO SCANDIC

Part of Europa Biosite

Produktinformation



Forschungsprodukte & Biochemikalien



Zellkultur & Verbrauchsmaterial



Diagnostik & molekulare Diagnostik



Laborgeräte & Service

Weitere Information auf den folgenden Seiten!
See the following pages for more information!



Lieferung & Zahlungsart

siehe unsere [Liefer- und Versandbedingungen](#)

Zuschläge

- Mindermengenzuschlag
- Trockeneiszuschlag
- Gefahrgutzuschlag
- Expressversand

SZABO-SCANDIC HandelsgmbH

Quellenstraße 110, A-1100 Wien

T. +43(0)1 489 3961-0

F. +43(0)1 489 3961-7

mail@szabo-scandic.com

www.szabo-scandic.com

[linkedin.com/company/szaboscandic](https://www.linkedin.com/company/szaboscandic) 

Data Sheet

PRDM14

Human, recombinant, N-terminal GST-tag
Catalog #: 50321
Lot #: 130925-G1 Conc.: 0.13 mg/ml

Formulated in: 40 mM Tris-HCl, pH 8.0, 110 mM NaCl, 2.2 mM KCl, 0.04% Tween-20 and 20% glycerol.

Stability: >6 months at -80°C. *Avoid freeze/thaw cycles.*

References:

1. Nishikawa, N., *et al.*, *Cancer Res.* 2007 Oct 15; **67(20)**:9649-57.
2. Tsuneyoshi, N., *et al.*, *Biochem Biophys Res Commun.* 2008 Mar 21; **367(4)**:899-905.

Description:

Human PR domain containing 14 (PRDM14), also known as PFM11 and PR Domain Zinc Finger Protein 14 (GenBank Accession No. NM_024504), a.a. 2-412, with N-terminal GST-tag, MW=72 kDa, expressed in an *E. coli* cell expression system.

Application:

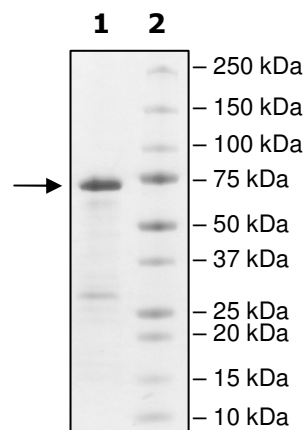
Useful for the study of enzyme kinetics, screening inhibitors, and selectivity profiling.

Quality Assurance

4-20% SDS-PAGE Coomassie staining

Lane 1:
2 µg PRDM14
Lane 2:
Protein Marker

MW: 72 kDa
Purity: ≥70%





6044 Cornerstone Court West, Suite E
San Diego, CA 92121
Tel: 1.858.829.3082
Fax: 1.858.481.8694
Email: info@bpsbioscience.com

Sequence:

MSPILGYWKIKGLVQPTRLLEYLEEKYEEHLYERDEGDKWRNKKFELGLEFPNLPYYI
DGDVKLTQSMAIRYIADKHNMLGGCPKERAEISMLEGAVLDIRYGVSRIAYSKDFETLK
VDFLSKLPEMLKMFEDRLCHKTYLNGDHVTHPDFMLYDALDVVLYMDPMCLDAFPKLV
CFKKRIEAIQIDKYLKSSKYIAWPLQGQWQATFGGGDH**PPKSDLEVL**FQ^G**PLGS**ALPR
PSEAVPQDKVCYPPESSQNLAAYYTPFPSYGHYRNSLATVEEDFQPFRQLEAAASA
APAMPPFFFRMAPLLSPGLGLQREPLYDLPWYSKLPWYPIPHVPREVPPFLSSSH
EYAGASSEDLGHQIIGGDNESGPCCGPDTLIPPPADASLLPEGLRRTSQLLPCSPSKQ
SEDGPKPSNQEGKSPARFQFTEEDLHFVLYGVTPSLEHPASLHHAISGLLVPPDSSGS
DSLQTLDKDSLQLPEGLCLMQTVFGEVPHFGVFCSSFIKGVRFQPFQKVVNASE
VKTYGDNMWEIFEDGHLSHFIDGKGGTGNWMSYVNCARFPKEQNLVAVQCQGHI
FYESCKEIHQNQELLVWYGDCYEKFLDIPVSLQVTEPGKQPSGPSEESAEGYRCERC
GKVFTYK

[LEVL**FQ^G**P](#): PreScission Protease cleavage site

OUR PRODUCTS ARE FOR RESEARCH USE ONLY. NOT FOR DIAGNOSTIC OR THERAPEUTIC USE.
To place your order, please contact us by Phone **1.858.829.3082** Fax **1.858.481.8694**
Or you can Email us at: info@bpsbioscience.com
Please visit our website at: www.bpsbioscience.com