



SZABO SCANDIC

Part of Europa Biosite

Produktinformation



Forschungsprodukte & Biochemikalien



Zellkultur & Verbrauchsmaterial



Diagnostik & molekulare Diagnostik



Laborgeräte & Service

Weitere Information auf den folgenden Seiten!
See the following pages for more information!



Lieferung & Zahlungsart

siehe unsere [Liefer- und Versandbedingungen](#)

Zuschläge

- Mindermengenzuschlag
- Trockeneiszuschlag
- Gefahrgutzuschlag
- Expressversand

SZABO-SCANDIC HandelsgmbH

Quellenstraße 110, A-1100 Wien

T. +43(0)1 489 3961-0

F. +43(0)1 489 3961-7

mail@szabo-scandic.com

www.szabo-scandic.com

[linkedin.com/company/szaboscandic](https://www.linkedin.com/company/szaboscandic)

Data Sheet

JHDM1D (KDM7A), FLAG-tag

Human, Recombinant, N-terminal FLAG-tag

Catalog #: 50419

Lot #: 160208 **Conc.:** 0.53 mg/ml

Formulated in: 40 mM Tris-HCl, pH 8.0, 110 mM NaCl, 2.2 mM KCl, 0.04% Tween-20, 20% glycerol, 80 µg/ml FLAG peptide

Stability: At least 6 months at -80°C. Avoid freeze/thaw cycles. Storing diluted enzyme is not recommended, if necessary, use carrier protein (BSA 0.1 – 0.5%).

References:

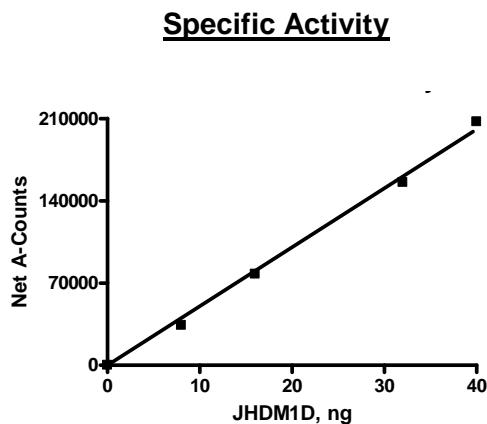
1. Yang, C., *et al. Cell Res.* 2010. **20**: 886-898.
2. Osawa, T. *et al. Proc. Nat. Acad. Sci. (USA).* 2011. **108(51)**: 20725-20729.

Description: Human JHDM1D, also known as Lysine-specific demethylase 7A (KDM7A) and KIAA1718, GenBank Accession No. NM_030647 a.a. 2-488 with an N-terminal FLAG-tag, MW=56 kDa, expressed in a baculovirus-infected Sf9 cell expression system.

Specific Activity: ≥0.2 pmole/min/µg
 Assay Conditions: 10 µl reaction mix containing assay buffer with 20 mM HEPES (pH 7.4), 50 mM NaCl, 1mM TCEP, 500 µM α-ketoglutarate, 25 µM iron, 2mM ascorbic acid, 0.01% Tween-20, 0.5 µM biotinylated peptide substrate, and JHDM1D (8 – 40ng) added to the wells. Add antibody against monomethylated K9 peptide. Incubate for 30 min, then Streptavidin-conjugated secondary antibody followed by Alpha Screening detection.

Application: Useful for the study of enzyme kinetics, screening inhibitors, and selectivity profiling.

Quality Assurance

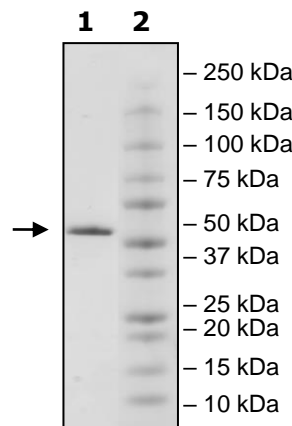


**6-20% SDS-PAGE
Coomassie staining**

Lane 1:
7 µg KDM7

Lane 2:
Protein Marker

Purity: ≥90%
MW: 56 kDa



OUR PRODUCTS ARE FOR RESEARCH USE ONLY. NOT FOR DIAGNOSTIC OR THERAPEUTIC USE.

To place your order, please contact us by Phone **1.858.829.3082** Fax **1.858.481.8694**

Or you can Email us at: info@bpsbioscience.com

Please visit our website at: www.bpsbioscience.com