



SZABO SCANDIC

Part of Europa Biosite

Produktinformation



Forschungsprodukte & Biochemikalien



Zellkultur & Verbrauchsmaterial



Diagnostik & molekulare Diagnostik



Laborgeräte & Service

Weitere Information auf den folgenden Seiten!
See the following pages for more information!



Lieferung & Zahlungsart

siehe unsere [Liefer- und Versandbedingungen](#)

Zuschläge

- Mindermengenzuschlag
- Trockeneiszuschlag
- Gefahrgutzuschlag
- Expressversand

SZABO-SCANDIC HandelsgmbH

Quellenstraße 110, A-1100 Wien

T. +43(0)1 489 3961-0

F. +43(0)1 489 3961-7

mail@szabo-scandic.com

www.szabo-scandic.com

[linkedin.com/company/szaboscandic](https://www.linkedin.com/company/szaboscandic) 

Data Sheet

JMJD1B (KDM3B), FLAG-tag

Human, recombinant, N-terminal Avi-, FLAG-tags

Catalog #: 50421

Lot #: 150129-1 **Conc.:** 0.12 mg/ml

Formulated in: 40 mM Tris-HCl, pH 8.0, 110 mM NaCl, 2.2 mM KCl, 0.04% Tween-20, 20% glycerol, 80 µg/ml FLAG peptide

Stability: At least 6 months at -80°C. Avoid freeze/thaw cycles. Storing diluted enzyme is not recommended, if necessary, use carrier protein (BSA 0.1 - 0.5%).

References:

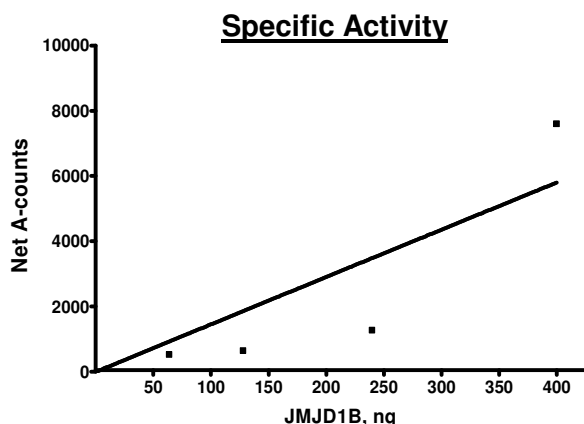
1. Kim, J-Y, *et al.*, *Mol. Cel. Biol.* 2012. **32(14):** 2917-2933.
2. Mikhaleva, I.I., *et al.*, *Peptides.* 2011. **32(4):** 826-831.

Description: Human JMJD1B, also known as lysine-specific demethylase 3B (KDM3B), JHDM2B, and KIA1082, GenBank Accession No. NM_016604/NP_057688, a.a. 2-1761 (end) with N-terminal Avi- and FLAG-tags, MW=195 kDa, expressed in a baculovirus-infected Sf9 cell expression system.

Specific Activity: 0.0045 pmole/min/µg
Assay Conditions: Reaction was performed with 20 mM HEPES (pH 7.4), 150 mM NaCl, 500 µM α-ketoglutarate, 25 µM iron, 2 mM ascorbic acid, 0.01% Tween-20, 0.5 µM biotinylated peptide substrate, and JMJD1B added to the wells. Add antibody against methylated H3K9. Incubate for 30 min. followed by Alphascreen® detection.

Application: Useful for the study of enzyme kinetics, screening inhibitors, and selectivity profiling.

Quality Assurance

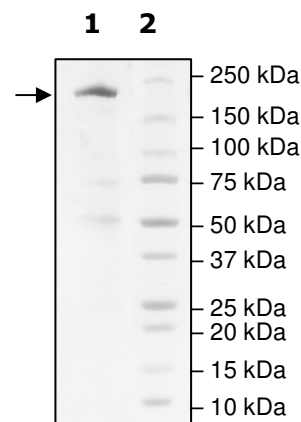


**4-20% SDS-PAGE
 Coomassie staining**

Lane 1:
 2.4 µg JMJD1B

Lane 2:
 Protein Marker

Purity: ≥80%
MW: 195 kDa



OUR PRODUCTS ARE FOR RESEARCH USE ONLY. NOT FOR DIAGNOSTIC OR THERAPEUTIC USE.

To place your order, please contact us by Phone **1.858.829.3082** Fax **1.858.481.8694**

Or you can Email us at: info@bpsbioscience.com

Please visit our website at: www.bpsbioscience.com