



SZABO SCANDIC

Part of Europa Biosite

Produktinformation



Forschungsprodukte & Biochemikalien



Zellkultur & Verbrauchsmaterial



Diagnostik & molekulare Diagnostik



Laborgeräte & Service

Weitere Information auf den folgenden Seiten!
See the following pages for more information!



Lieferung & Zahlungsart

siehe unsere [Liefer- und Versandbedingungen](#)

Zuschläge

- Mindermengenzuschlag
- Trockeneiszuschlag
- Gefahrgutzuschlag
- Expressversand

SZABO-SCANDIC HandelsgmbH

Quellenstraße 110, A-1100 Wien

T. +43(0)1 489 3961-0

F. +43(0)1 489 3961-7

mail@szabo-scandic.com

www.szabo-scandic.com

[linkedin.com/company/szaboscandic](https://www.linkedin.com/company/szaboscandic) 

Data Sheet

DOT1L

Human, recombinant, N-terminal GST tag

Catalog #: 51005

Lot#: 120110

Conc.: 0.95 mg/ml

Formulated in: 40 mM Tris-HCl, pH 8.0,
110 mM NaCl, 2.2 mM KCl, 16 mM
Glutathione, 20% Glycerol and 3 mM DTT.

Stability: >12 months at -80°C

References:

1. McGinty, R.K. et al., Nature 453 (7196), 812-816 (2008).
2. Steger, D.J. et al., Mol. Cell. Biol. 28 (8), 2825-2839 (2008).

Description:

Human DOT1L (GenBank Accession No. NM_032482), amino-acids 2-416 with N-terminal GST tag, MW = 73 kDa, expressed in *E. coli* expression system.

Application:

Useful for the study of enzyme kinetics, screening inhibitors, and selectivity profiling.

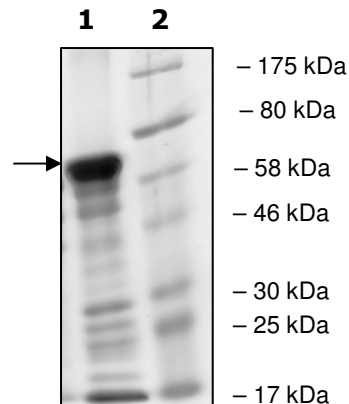
Quality Assurance

**4-20% SDS-PAGE
Coomassie staining**

Lane 1:
4.75 µg DOT1L
Lane 2:
Protein Marker
BioLabs (#P7708L)

MW: 73 kDa

Purity: ≥50%



OUR PRODUCTS ARE FOR RESEARCH USE ONLY. NOT FOR DIAGNOSTIC OR THERAPEUTIC USE.

To place your order, please contact us by Phone **1.858.829.3082** Fax **1.858.481.8694**

Or you can Email us at: info@bpsbioscience.com

Please visit our website at: www.bpsbioscience.com



6044 Cornerstone Court West, Suite E
San Diego, CA 92121
Tel: 1.858.829.3082
Fax: 1.858.481.8694
Email: info@bpsbioscience.com

Amino Acid Sequence:

MSPILGYWKIKGLVQPTRLLEYLEEKYEEHLYERDEGDKWRNKKFELGLEFPNLPYYI
DGDVKLTQSMAIRYIADKHNMLGGCPKERAEISMLEGAVLDIRYGVSRIAYSKDFETLK
VDFLSKLPEMLKMFEDRLCHKTYLNGDHVTHPDFMLYDALDVVLYMDPMCLDAFPKLV
CFKKRIEAIQIDKYLKSSKYIAWPLQGQWQATFGGGDHPPKSDLVPRGSGEKLELRLKS
PVGAEPVYPWPLPVYDKHHDAHEIETIRWVCEEIPDLKLAMENYVLIDYDTKSFESM
QRLCDKYNRAIDSIHQLWKGTTQPMKLNTRPSTGLLRHILQQVYNHSVTDPEKLNNEYEP
FSPEVYGETSFDLVAQMIDEIKMTDDDLFVDLGSVGVVQLQVAAATNCKHHYGVEKA
DIPAKYAETMDREFRKMWKWYGKKHAEYTLERGDFLSEWRERIANTSVIFVNNFAFG
PEVDHQLKERFANMKEGGRIVSSKPFAPLNFRRNSRNLSDIGTIMRVVELSPLKGSVSW
TGKPVSYLHTIDRTILENYFSSLKNPKLREEQEAARRRQQRESKSNAATPTKGPPEGKV
AGPADAPMDSGAEEEEKAGAATVKKPSPSKARKKKLNKKGRKMAGRKRGRPKK

OUR PRODUCTS ARE FOR RESEARCH USE ONLY. NOT FOR DIAGNOSTIC OR THERAPEUTIC USE.
To place your order, please contact us by Phone **1.858.829.3082** Fax **1.858.481.8694**
Or you can Email us at: info@bpsbioscience.com
Please visit our website at: www.bpsbioscience.com