



SZABO SCANDIC

Part of Europa Biosite

Produktinformation



Forschungsprodukte & Biochemikalien



Zellkultur & Verbrauchsmaterial



Diagnostik & molekulare Diagnostik



Laborgeräte & Service

Weitere Information auf den folgenden Seiten!
See the following pages for more information!



Lieferung & Zahlungsart

siehe unsere [Liefer- und Versandbedingungen](#)

Zuschläge

- Mindermengenzuschlag
- Trockeneiszuschlag
- Gefahrgutzuschlag
- Expressversand

SZABO-SCANDIC HandelsgmbH

Quellenstraße 110, A-1100 Wien

T. +43(0)1 489 3961-0

F. +43(0)1 489 3961-7

mail@szabo-scandic.com

www.szabo-scandic.com

[linkedin.com/company/szaboscandic](https://www.linkedin.com/company/szaboscandic) 

Data Sheet

EZH1/EED/SUZ12

Human, recombinant

Catalog #: 51006

Lot #: 131206

Conc.: 0.29 mg/ml

Formulated in: 40 mM Tris, pH 8.0, 110 mM NaCl, 2.2 mM KCl, and 20% glycerol.

Stability: At least 6 months at -80°C . Avoid freeze/thaw cycles. Storing diluted enzyme is not recommended, if necessary, use carrier protein (BSA 0.1 – 0.5%).

References:

1. Margueron R. et al. Mol. Cell **32** (4), 503-518 (2008).
2. Shen X. et al., Mol. Cell **32** (4), 491-502 (2008).

Description: Complex of human EZH1 (GenBank Accession No. NM_001991), (amino acids 2-end) with N-terminal His tag, MW= 86 kDa, human EED (NM_003797) (a-a 2-end) with N-terminal Flag tag, MW= 51 kDa, and human SUZ12 (NM_015355) (a-a 2-end) with N-terminal His tag, MW = 87 kDa co-expressed in baculovirus expression system.

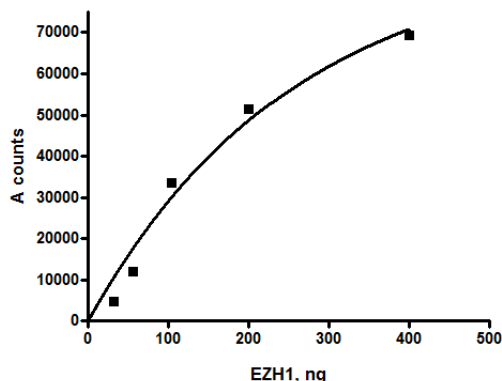
Specific Activity: 0.02 pmol/min/ μg .

Assay conditions: Enzyme was incubated with 2 μM histone mixture with 40 μM AdoMet in HMT buffer 2A in a 10 μl reaction for 60 min at RT. 5 μl of Anti-Rabbit AlphaLISA[®] acceptor beads (1:250) and 5 μl of Primary antibody 6 (1:50) were added and incubation continued for 30 min. Nickel Donor beads (1:125) were added (10 μl) and mixture was further incubated for 45-60 min at RT before A-counts were measured.

Application: Useful for the study of enzyme kinetics, screening inhibitors, and selectivity profiling.

Quality Assurance

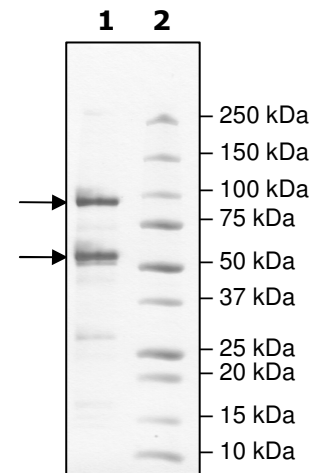
Specific Activity



4-20% SDS-PAGE Coomassie staining

Lane 1:
4.4 μg complex
Lane 2:
Protein Marker

MW: EZH1 86 kDa
SUZ12 87 kDa
EED 51 kDa
Purity: $\geq 80\%$



OUR PRODUCTS ARE FOR RESEARCH USE ONLY. NOT FOR DIAGNOSTIC OR THERAPEUTIC USE.

To place your order, please contact us by Phone **1.858.829.3082** Fax **1.858.481.8694**

Or you can Email us at: info@bpsbioscience.com

Please visit our website at: www.bpsbioscience.com