



SZABO SCANDIC

Part of Europa Biosite

Produktinformation



Forschungsprodukte & Biochemikalien



Zellkultur & Verbrauchsmaterial



Diagnostik & molekulare Diagnostik



Laborgeräte & Service

Weitere Information auf den folgenden Seiten!
See the following pages for more information!



Lieferung & Zahlungsart

siehe unsere [Liefer- und Versandbedingungen](#)

Zuschläge

- Mindermengenzuschlag
- Trockeneiszuschlag
- Gefahrgutzuschlag
- Expressversand

SZABO-SCANDIC HandelsgmbH

Quellenstraße 110, A-1100 Wien

T. +43(0)1 489 3961-0

F. +43(0)1 489 3961-7

mail@szabo-scandic.com

www.szabo-scandic.com

[linkedin.com/company/szaboscandic](https://www.linkedin.com/company/szaboscandic) 

Data Sheet

EZH1/EED/SUZ12 **/RbAp48/AEBP2**

Human, recombinant
Catalog #: 51007
Lot#: 130201-EN Conc.: 0.3 mg/ml

Formulated in: 40 mM Tris, pH 8.0, 110 mM NaCl, 2.2 mM KCl, 200 mM Imidazole, and 20% glycerol.

Stability: >6 months at -80°C

References:

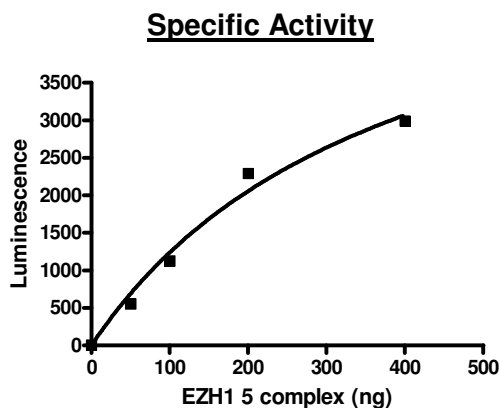
1. Margueron R. *et al. Mol. Cell* **32** (4), 503-518 (2008).
2. Shen X. *et al. Mol. Cell* **32** (4), 491-502 (2008).

Description: Complex of human EZH1 (GenBank Accession No. NM_001991), (a.a. 2-end) with N-terminal His-tag, MW= 86 kDa, human EED (NM_003797) (a.a. 2-end) with N-terminal Flag-tag, MW= 51 kDa, human SUZ12 (NM_015355) (a.a. 2-end) with N-terminal His-tag, MW = 87 kDa, human AEBP2 (NM_153207) (a.a. 2-end) with N-terminal His-tag, MW= 53 kDa, and human RbAp48 (NM_005610) (a.a. 2-end) with N-terminal His-tag, MW = 48 kDa, co-expressed in baculovirus expression system.

Assay conditions: 50 µl reaction mix (20 mM phosphate pH 7.4, 0.05% Tween-20, 40 µM S-adenosylmethionine, and enzyme complex) add to the wells coated with the substrate on a GBioscience Neutravidin white plate. Incubate for 1 hr. Add antibody against methylated K27 residue of histone H3, incubate 1 hr. Then, add secondary HRP-labeled antibody and incubate 30 min. Finally, add HRP chemiluminescent substrates and read luminescence.

Application: Useful for the study of enzyme kinetics, screening inhibitors, and selectivity profiling.

Quality Assurance



**4-20% gradient
 SDS-PAGE
 Coomassie staining**

Lane 1:
 3.1 µg enzyme complex

Lane 2:
 Protein Marker

Purity: ≥79%

