



SZABO SCANDIC

Part of Europa Biosite

Produktinformation



Forschungsprodukte & Biochemikalien



Zellkultur & Verbrauchsmaterial



Diagnostik & molekulare Diagnostik



Laborgeräte & Service

Weitere Information auf den folgenden Seiten!
See the following pages for more information!



Lieferung & Zahlungsart

siehe unsere [Liefer- und Versandbedingungen](#)

Zuschläge

- Mindermengenzuschlag
- Trockeneiszuschlag
- Gefahrgutzuschlag
- Expressversand

SZABO-SCANDIC HandelsgmbH

Quellenstraße 110, A-1100 Wien

T. +43(0)1 489 3961-0

F. +43(0)1 489 3961-7

mail@szabo-scandic.com

www.szabo-scandic.com

[linkedin.com/company/szaboscandic](https://www.linkedin.com/company/szaboscandic) 

Data Sheet

EZH2 Y641S /EED/SUZ12/RbAp48/AEBP2

Human, recombinant

Catalog #: 51013

Lot #: 110802 Conc.: 0.4 mg/ml

Formulated in: 40 mM Tris-HCl, pH 8.0, 110 mM NaCl, 2.2 mM KCl, 200 mM Imidazole, and 20% Glycerol.

Stability: >6 months at -80°C

References:

1. Varambally, S. et al. *Science* 322 (5908), 1695-1699 (2008).
2. Rakotobe, D. et al., *Virol. J.* 5, 32 (2008).

Application Reference:

Morin, R.D., et al. *Nat Genet.* 2010 February; **42(2)**: 181-185.

Description:

Mutant version of our regular EZH2 5-member complex (Cat. # 51004), but with a Tyr-to-Ser mutation on a.a. 646 of the EZH2 protein. Complex of human EZH2 (GenBank Accession No. NM_004456), (a-a 2-end ; Y646S*) with N-terminal His tag, MW= 86 kDa, human EED (NM_003797) (a-a 2-end) with N-terminal Flag tag, MW= 51 kDa, human SUZ12 (NM_015355) (a-a 2-end) with N-terminal His tag, MW = 87 kDa, Human AEBP2 (NM_153207) (a-a 2-end) with N-terminal His tag, MW= 53 kDa, and human RbAp48 (NM_005610) (a-a 2-end) with N-terminal His tag, MW = 48 kDa, co-expressed in baculovirus expression system. *This mutation is often cited as Y641S in variant 3 (GenBank Accession No. NM_001203247).

Application:

Useful for the study of enzyme kinetics, screening inhibitors, and selectivity profiling.

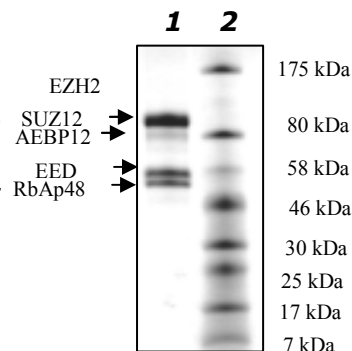
Quality Assurance

4-20% gradient SDS-PAGE
Coomassie staining

Lane 1:
2.4 µg enzyme complex

Lane 2:
Protein Marker
BioLabs (#P7708L)

Purity ≥ 90%



OUR PRODUCTS ARE FOR RESEARCH USE ONLY. NOT FOR DIAGNOSTIC OR THERAPEUTIC USE.

To place your order, please contact us by Phone 1.858.829.3082 Fax 1.858.481.8694

Or you can Email us at: info@bpsbioscience.com

Please visit our website at: www.bpsbioscience.com