



SZABO SCANDIC

Part of Europa Biosite

Produktinformation



Forschungsprodukte & Biochemikalien



Zellkultur & Verbrauchsmaterial



Diagnostik & molekulare Diagnostik



Laborgeräte & Service

Weitere Information auf den folgenden Seiten!
See the following pages for more information!



Lieferung & Zahlungsart

siehe unsere [Liefer- und Versandbedingungen](#)

Zuschläge

- Mindermengenzuschlag
- Trockeneiszuschlag
- Gefahrgutzuschlag
- Expressversand

SZABO-SCANDIC HandelsgmbH

Quellenstraße 110, A-1100 Wien

T. +43(0)1 489 3961-0

F. +43(0)1 489 3961-7

mail@szabo-scandic.com

www.szabo-scandic.com

[linkedin.com/company/szaboscandic](https://www.linkedin.com/company/szaboscandic) 

Data Sheet

EZH2 (P132S) /EED/SUZ12/RbAp48/AEBP2

Human, recombinant
Catalog #: 51019
Lot #: 140616 **Conc.:** 0.22 mg/ml

Formulated in: 40 mM Tris-HCl, pH 8.0, 110 mM NaCl, 2.2 mM KCl, and 20% glycerol.

Stability: >6 months at -80°C. Avoid freeze/thaw cycles. Storing diluted enzyme is not recommended, if necessary, use carrier protein (BSA 0.1 – 0.5%).

References:

- Varambally, S. *et al. Science* **322** (5908), 1695-1699 (2008).
- Rakotobe, D. *et al., Virol. J.* **5**, 32 (2008).

Description:

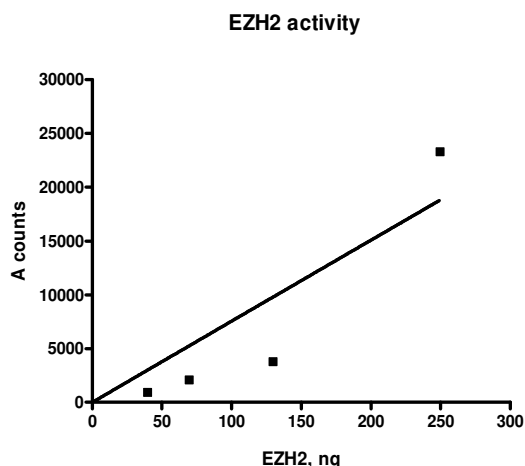
Mutant version of BPS's regular EZH2 5-member complex (Cat. # 51004), but with a Pro-to-Ser mutation on a.a. 132 of the EZH2 protein. Complex of human EZH2 (GenBank Accession No. NM_004456), (a.a. 2-end ; P132S) with N-terminal His-tag, MW= 86 kDa, human EED (NM_003797) (a.a. 2-end) with N-terminal FLAG-tag, MW= 51 kDa, human SUZ12 (NM_015355) (a.a. 2-end) with N-terminal His-tag, MW = 87 kDa, Human AEBP2 (NM_153207) (a.a. 2-end) with N-terminal His-tag, MW= 53 kDa, and human RbAp48 (NM_005610) (a.a. 2-end) with N-terminal His-tag, MW = 48 kDa, co-expressed in a baculovirus expression system.

Specific Activity: 0.08 pmol/min/μg
 Assay Conditions: Assay was done according to BPS Cat. #52059.

Application:

Useful for the study of enzyme kinetics, screening inhibitors, and selectivity profiling.

Quality Assurance



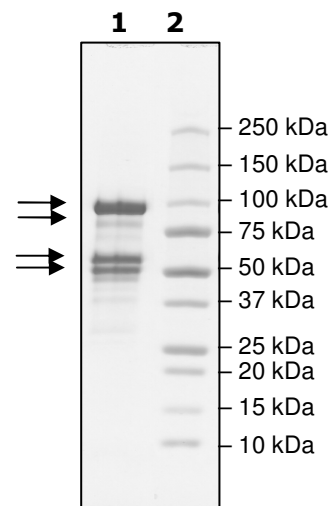
4-20% SDS-PAGE
Coomassie staining

Lane 1:
 7 μg EZH2(P132S)5M

Lane 2:
 Protein Marker

MW: EZH2 87kDa
 SUZ12 88 kDa
 AEBP 54 kDa
 EED 51 kDa
 RbAp48 48 kDa

Purity: ≥90%



OUR PRODUCTS ARE FOR RESEARCH USE ONLY. NOT FOR DIAGNOSTIC OR THERAPEUTIC USE.

To place your order, please contact us by Phone **1.858.829.3082** Fax **1.858.481.8694**

Or you can Email us at: info@bpsbioscience.com

Please visit our website at: www.bpsbioscience.com



6044 Cornerstone Court West, Suite E
San Diego, CA 92121
Tel: 1.858.829.3082
Fax: 1.858.481.8694
Email: info@bpsbioscience.com

Sequence

MHHHHHHGQGTGKKSEKGPVCWRKRVKSEYMRLRQLKRFRRRADEVKSMFSSNRQKI
LERTEILNQEWKQRRRIQPVHILTSVSSLRGTRECSVTSDLDFPTQVIPLKTLNAVASVPI
MYSWSPLQQNFMVEDETVLHNI^SYMGDEVLDQDGT FIEELIKNYDGKVHGDRECGFIN
DEIFVELVNALGQYNDDDDDDGDDPEEREKQKDLEDHRDDKESRPPRKFPSPDKIF
EAISSMFPDKGTAEELKEYKELTEQQLPGALPPECTPNIDGPNKSVQREQSLHSFH
TLFCRRCFKYDCFLHRKCNYSFHATPNTYKRKNTETALDNKPCGPQCYQHLEGAKEF
AAALTAERIKTPPKRPGGRRRRLPNSSRPSTPTINVLESKDTSDREAGTETGGE
NNDKEEEEKDETSSSSEANSRCQTPIKMKPNIEPPENVEWSGAEASMFRLVIGTYID
NFCAIARLIGTKTCRQVYEFYFRVKESSIIAPAPAEDVDTPPRKKRKHRLWAAHCRKIQL
KKDGSSNHVYNYQPCDHPRQPCDSSCPCVIAQNFCEKFCQCSSECQNRFPGCRCKA
QCNTKQCPCYLAVRECDPDLCLTCGAADHWDSKNVSCKNCSIQRGSKKHLLLAPSD
VAGWGIFIKDPVQKNEFISEYCGEISQDEADRRGKVYDKYMCSFLFNLNDFVVDAT
RKGNKIRFANHSVNPNCYAKVMMVNGDHRIGIFAKRAIQTGEELFFDYRYSQADALKY
VGIEREMEIP

Red: His-tag including the first M

Black: EZH2 (a.a. 2-751(end))

Green: P132S

OUR PRODUCTS ARE FOR RESEARCH USE ONLY. NOT FOR DIAGNOSTIC OR THERAPEUTIC USE.

To place your order, please contact us by Phone **1.858.829.3082** Fax **1.858.481.8694**

Or you can Email us at: info@bpsbioscience.com

Please visit our website at: www.bpsbioscience.com