



SZABO SCANDIC

Part of Europa Biosite

Produktinformation



Forschungsprodukte & Biochemikalien



Zellkultur & Verbrauchsmaterial



Diagnostik & molekulare Diagnostik



Laborgeräte & Service

Weitere Information auf den folgenden Seiten!
See the following pages for more information!



Lieferung & Zahlungsart

siehe unsere [Liefer- und Versandbedingungen](#)

Zuschläge

- Mindermengenzuschlag
- Trockeneiszuschlag
- Gefahrgutzuschlag
- Expressversand

SZABO-SCANDIC HandelsgmbH

Quellenstraße 110, A-1100 Wien

T. +43(0)1 489 3961-0

F. +43(0)1 489 3961-7

mail@szabo-scandic.com

www.szabo-scandic.com

[linkedin.com/company/szaboscandic](https://www.linkedin.com/company/szaboscandic) 

Data Sheet

EHMT1(GLP)

Human, recombinant, N-terminal GST-tag
Catalog #: 51020
 Lot#: 130117 Conc.: 0.21 mg/ml

Formulated in: 40 mM Tris-HCl, pH 8.0,
 110 mM NaCl, 2.2 mM KCl, 16 mM
 glutathione, 3 mM DTT, 20% glycerol.

Stability: >6 months at -80°C

References:

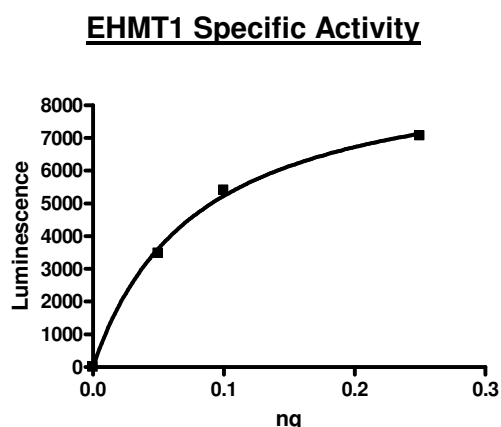
1. Huang, J., *et al.*, *J Biol. Chem.* 2010
 Mar 26; **285(13)**: 9636-41.
2. Ueda, J., *et al.*, *J Biol. Chem.* 2006
 Jul 21; **281(29)**: 20120-8.

Description: Human euchromatic histone-lysine N-methyltransferase (EHMT1), also known as G9a-like protein (GLP) or KMT1D, GenBank Accession No. NM_024757, a.a. 894-1298 (end) with N-terminal GST-tag, MW= 72.4 kDa, expressed in an *E. coli* expression system.

Specific Activity: 122.3 pmole/min/μg
 Assay Conditions: 50 μl reaction mix (50 mM TRIS pH 8.8, 5mM MgCl₂, 4mM DTT, 0.05% Tween-20, 40 μM S-adenosylmethionine, and EHMT1 (0.05 – 0.5 ng) add to the wells coated with the substrate on a GBioscience Neutravidin black plate. Incubate for 1 hr. Add antibody against methylated K9 residue of histone H3, incubate 1 hr. Then, add secondary HRP-labeled antibody and incubate 30 min. Finally, add HRP chemiluminescent substrates and read luminescence.

Application: Useful for the study of enzyme kinetics, screening inhibitors, and selectivity profiling.

Quality Assurance



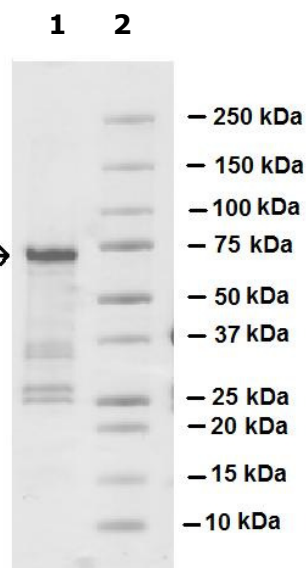
**4-20% SDS-PAGE
 Coomassie staining**

Lane 1:
 1.6 μg EHMT1

Lane 2:
 Protein Marker

EHMT1 →

MW: 72.4 kDa
Purity: ≥53%





6044 Cornerstone Court West, Suite E
San Diego, CA 92121
Tel: 1.858.829.3082
Fax: 1.858.481.8694
Email: info@bpsbioscience.com

Protein Sequence:

MSPILGYWKIKGLVQPTRLLEYLEEKYEEHLYERDEGDKWRNKKFELGLEFPNLPYYI
DGDVKLTQSMAIRYIADKHNMLGGCPKERAIEISMLEGAVLDIRYGVSRIAYSKDFETLK
VDFLSKLPEMLKMFEDRLCHKTYLNGDHVTHPDFMLYDALDVVLYMDPMCLDAFPKLV
CFKKRIEAIQIDKYLKSSKYIAWPLQGQWQATFGGGDHPPKSDLEVLFGGPLGSSKGS
INIRDNEENICLHWAASFSGCVDIAEILLAAKCDLHAVNIHGDSPLHIAARENRYDCVVL
LSRDSVTLKNKEGETPLQCASLNSQVWSALQMSKALQDSAPDRPSPVERIVSRDIA
RGYERIPICVNAVDSEPCPSNYKYVSQNCVTSPMNIDRNITHLQYCVCIDDCSSSNM
CGQLSMRCWYDKDGRLLPEFNMAEPPLIFECNHACSCWRNCRNRVVQNGLRARLQ
LYRTRDMGWGVRSLQDIPPGTFVCEYVGELISDSEADVREEDSYLFDLDNKDGEVYCI
DARFYGNVSRFINHHCEPNLVPVRVFMHQDLRFPRIAFFSTRLEAGEQLGFDYGER
FWDIKGKLFSCRCGSPKCRHSSAALAQRQASAAQEAQEDGLPDTSSAAAADPL

OUR PRODUCTS ARE FOR RESEARCH USE ONLY. NOT FOR DIAGNOSTIC OR THERAPEUTIC USE.
To place your order, please contact us by Phone **1.858.829.3082** Fax **1.858.481.8694**
Or you can Email us at: info@bpsbioscience.com
Please visit our website at: www.bpsbioscience.com