



SZABO SCANDIC

Part of Europa Biosite

Produktinformation



Forschungsprodukte & Biochemikalien



Zellkultur & Verbrauchsmaterial



Diagnostik & molekulare Diagnostik



Laborgeräte & Service

Weitere Information auf den folgenden Seiten!
See the following pages for more information!



Lieferung & Zahlungsart

siehe unsere [Liefer- und Versandbedingungen](#)

Zuschläge

- Mindermengenzuschlag
- Trockeneiszuschlag
- Gefahrgutzuschlag
- Expressversand

SZABO-SCANDIC HandelsgmbH

Quellenstraße 110, A-1100 Wien

T. +43(0)1 489 3961-0

F. +43(0)1 489 3961-7

mail@szabo-scandic.com

www.szabo-scandic.com

[linkedin.com/company/szaboscandic](https://www.linkedin.com/company/szaboscandic) 

Data Sheet

MLL1/WDR5/Ash2L/RbBP5/DPY30 Complex

Human, recombinant
Catalog #: 51021
Lot #: 120907 **Conc.:** 0.15 mg/ml

Formulated in: 45 mM Tris-HCl, pH 8.0, 124 mM NaCl, 2.4 mM KCl, 1 mM TCEP, 1 μM ZnCl₂, and 10% glycerol.

Stability: >6 months at -80°C. Avoid freeze/thaw cycles. Storing diluted enzyme is not recommended, if necessary, use carrier protein (BSA 0.1 - 0.5%).

References:

1. Patel, A., *et al.*, *J. Biol. Chem.* 2009; **284(36)**: 24242-24256.
2. Mohan, M., *et al.*, *Nat. Rev. Cancer* 2010; **10(10)**: 721-728.

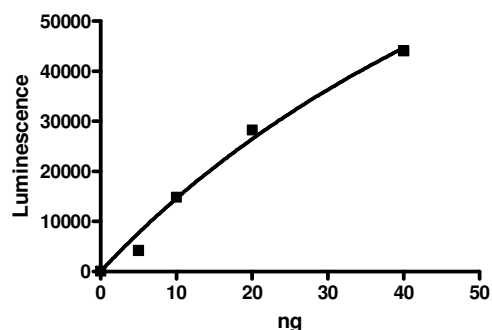
Description: MLL1/WAR complex of human **MLL1** (GenBank Accession No. NM_005933) a.a. 3745-end with N-terminal His-tag and MW= 27 kDa, human **WDR5** (GenBank Accession No. NM_017588), a.a. 22-end with N-terminal Flag-tag and MW= 35 kDa, human **Ash2L** (GenBank Accession No. NM_001105214), a.a. 2-end with N-terminal His-tag and MW= 61 kDa, human **RbBP5** (GenBank Accession No. NM_005057), a.a. 2-end with N-terminal His-tag and MW= 60 kDa, and human **DPY30** (GenBank Accession No. NM_032574) a.a. 2-end with N-terminal His-tag and MW=12 kDa individually expressed in an *E. coli* expression system.

Assay Conditions: 50 μl reaction mix (50 mM Tris, pH 8.8, 5 mM MgCl₂, 4 M DTT, 20 μM S-adenosylmethionine, and 5-50 ng MLL complex) add to the wells coated with the substrate. Incubate at room temperature for 1 hr. Add antibody against methylated K4 residue of histone H3, incubate 1 hr. Then, incubate 30 minutes with the secondary HRP-labeled antibody. Finally, add HRP chemiluminescent substrate and read luminescence.

Application: Useful for the study of enzyme kinetics, screening inhibitors, and selectivity profiling.

Quality Assurance

Specific Activity



**4-20% SDS-PAGE
Coomassie Staining**

Lane 1:

MLL1/WAR Complex

Lane 2:

Protein Marker

Purity: ≥81%

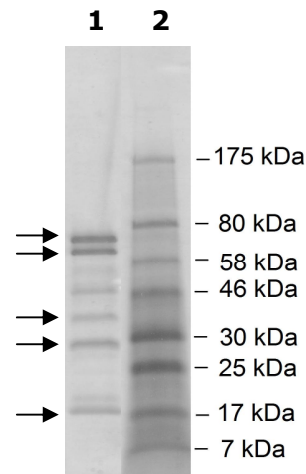
MW: RbBP5: 60 kDa

Ash2L: 61 kDa

WDR5 37 kDa

MLL1: 27 kDa

DPY30: 12 kDa



OUR PRODUCTS ARE FOR RESEARCH USE ONLY. NOT FOR DIAGNOSTIC OR THERAPEUTIC USE.

To place your order, please contact us by Phone **1.858.829.3082** Fax **1.858.481.8694**

Or you can Email us at: info@bpsbioscience.com

Please visit our website at: www.bpsbioscience.com



6044 Cornerstone Court W, Ste E
San Diego, CA 92121
Tel: 1.858.829.3082
Fax: 1.858.481.8694
Email: info@bpsbioscience.com

Protein Sequences:

MLL1

MHHHHHHHFRFHKPEEANEPLNPHGSARAEVHLRKSADFDMFNFLASKHRQPPEYNP
NDEEEEEEVQLKSARRATSMDLPMRFRHLKKTKEAVGVYRSPHGRGLFCKRND
AGEMVIEYAGNVIRSIQTDKREKYYDSKGIGCYMFRIDDSEVVDATMHGNAARFINHS
CEPNCYSRVINIDGQKHIVIFAMRKIYRGEELTYDYKFPIEDASNKLPCNCGAKKCRKF
LN

WDR5

MDYKDDDDKSATQSKPTPVKPNYALKFTLAGHTKAVSSVKFSPNGEWLASSADKLI
KIWGAYDGKFEKTISGHKLGISDVAWSSDSNLLVSASDDKTLKIWDVSSGKCLKTLKG
HSNYVFCCNFNPQSNLIVSGSFDESRIWDVKTGKCLKTLPAHSDPVSAVHFNRDGS
LIVSSSYDGLCRIWDTASGQCLKTLIDDDNPPVSVFKFSPNGKYILAATLDNTLKLWDY
SKGKCLKTYTGHKNEKYCIFANFSVTGGKWIVSGSEDNLVYIWNLQTKIVQKLQGH
DVVISTACHPTENIIASAALENDKTIKLWKSDC

Ash2L

MHHHHHHHDTQAGSVDEENGRQLGEVELQCGICTKWFTADTFGIDTSSCLPFMTNYSF
HCNVCHHSGNTYFLRKQANLKEMCLSANLWQSRTQDEHPKTMFSKDKDIIPFID
KYWECMTTRQRPVKMTWPNIVKTMSKERDVLVKEHPDPGSKDPEEDYPKFGLLD
QDLSNIGPAYDNQKQSSAVSTSGNLNGGIAAGSSGKGRGAKRKQQDGGTTGTTKKA
RSDPLFSAQRLPPHGYPLEHPFNKDGRYRILAEPDPHAPDPEKLELDCWAGKPIPGD
LYRACL YERVLLALHDRAPQLKISDDRLTVVGEKGYSMVRASHGVRKGAWYFEITVD
EMPPDTAARLGWSQPLGNLQAPLGYDKFSYSWRSKKGTKFHQSIGKHYSSGYGGG
DVLGFYINLPEDTETAKSLPDTYKDKALIKFKSYLYFEEKDFVDKAEKSLKQTPHSEIIF
YKNGVNQGVAYKDIFEGVYFPAISLYKSCVTSINFGPCFKYPPKDLTYRPMSDMGWG
AVVEHTLADVLYHVETEVDGRRSPPEP

RbBP5

MHHHHHHHNLELLESFGQNYPEEADGTLDCISMALCTFNRWGTL LAVGCNDGRIVW
DFLTRGIAKII SAHIHPVCSLCWSRDGHKLVASASTDNIVSQWDVLSGDCDQRFRFPSP
LKVQYHPRDQNKVLVCPMKSAPVMLTSDSKHVLPVDDSDLN VVASFDRRGEYIY
TGNAGKILVLKTDSDQLVASFRVTTGTSNTTAIKSIEFARKGSCFLINTADRIIRVYDG
REILTCGRDGEPEPMQKLQDLVNRTPWKKCCFSGDGEYIVAGSARQHALYIWEKSIG
NLVKILHGTRGELLLDVAWHPVRPIIASISSGVVSIWAQNQVENWSAFAPDFKELDEN
VEYEERESEFDIEDEDKSEPEQTGADAAEDEVDVTSVDPIAAFCSSEDELEDKALL
YLP I APEVEDPEENPYGPPDAVQTS LMDEGASSEKQRQSSADGSQPPKKPKTTNI
ELQGVPNDEVHPLLGVKGDGKSKKKQAGRPKGSKGKEKDSPFKPKLYKGDRGLPL
EGSAKGVQAELSQPLTAGGAISELL

DPY30

MHHHHHHHEPEQMLEGQTQVAENPHSEYGLTDNVERIVENEKINA EKSSKQKVDLQSL
PTRAYLDQTVVPILLQGLAVLAKERPPNPIEFLASYLLKNKAQFEDRN

OUR PRODUCTS ARE FOR RESEARCH USE ONLY. NOT FOR DIAGNOSTIC OR THERAPEUTIC USE.
To place your order, please contact us by Phone **1.858.829.3082** Fax **1.858.481.8694**
Or you can Email us at: info@bpsbioscience.com
Please visit our website at: www.bpsbioscience.com