



# SZABO SCANDIC

Part of Europa Biosite

## Produktinformation



Forschungsprodukte & Biochemikalien



Zellkultur & Verbrauchsmaterial



Diagnostik & molekulare Diagnostik



Laborgeräte & Service

Weitere Information auf den folgenden Seiten!  
See the following pages for more information!



### Lieferung & Zahlungsart

siehe unsere [Liefer- und Versandbedingungen](#)

### Zuschläge

- Mindermengenzuschlag
- Trockeneiszuschlag
- Gefahrgutzuschlag
- Expressversand

### SZABO-SCANDIC HandelsgmbH

Quellenstraße 110, A-1100 Wien

T. +43(0)1 489 3961-0

F. +43(0)1 489 3961-7

[mail@szabo-scandic.com](mailto:mail@szabo-scandic.com)

[www.szabo-scandic.com](http://www.szabo-scandic.com)

[linkedin.com/company/szaboscandic](https://www.linkedin.com/company/szaboscandic) 

## Data Sheet

### MLL1/WDR5/Ash2L/ RbBP5 Complex

Human, recombinant

**Catalog #:** 51022

**Lot #:** 120906    **Conc.:** 0.24 mg/ml

**Formulated in:** 50 mM Tris-HCl, pH 7.4, 300 mM NaCl, 250 mM imidazole, 1 mM TCEP, 1  $\mu$ M ZnCl<sub>2</sub>, and 10% glycerol.

**Stability:** >6 months at -80°C. Avoid freeze/thaw cycles. Storing diluted enzyme is not recommended, if necessary, use carrier protein (BSA 0.1 – 0.5%).

**References:**

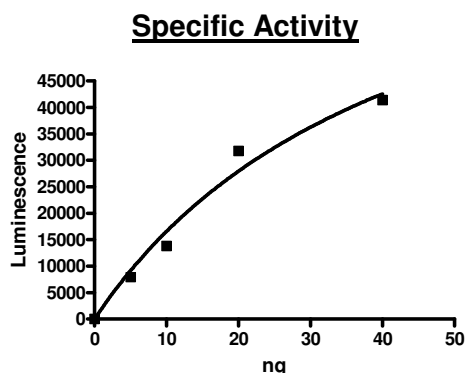
1. Patel, A., *et al.*, *J. Biol. Chem.* 2009; **284(36)**: 24242-24256.
2. Mohan, M., *et al.*, *Nat. Rev. Cancer* 2010; **10(10)**: 721-728.

**Description:** MLL1/WAR complex of human **MLL1** (GenBank Accession No. NM\_005933) a.a. 3745-end with N-terminal His-tag and MW= 27 kDa, human **Ash2L** (GenBank Accession No. NM\_001105214), a.a. 2-end with N-terminal His-tag and MW= 61 kDa, and human **RbBP5** (GenBank Accession No. NM\_005057), a.a. 2-end with N-terminal His-tag and MW= 60 kDa individually expressed in an *E. coli* expression system, and human **WDR5** (GenBank Accession No. NM\_017588), a.a. 2-end with N-terminal His-tag and MW= 37.4 kDa expressed in a baculovirus Sf9 expression system.

**Assay Conditions:** 50  $\mu$ l reaction mix (50 mM Tris, pH 8.8, 5 mM MgCl<sub>2</sub>, 4 M DTT, 20  $\mu$ M S-adenosylmethionine, and 5-50 ng MLL complex) add to the wells coated with the substrate. Incubate at room temperature for 1 hr. Add antibody against methylated K4 residue of histone H3, incubate 1 hr. Then, incubate 30 minutes with the secondary HRP-labeled antibody. Finally, add HRP chemiluminescent substrate and read luminescence.

**Application:** Useful for the study of enzyme kinetics, screening inhibitors, and selectivity profiling.

### Quality Assurance



**4-20% SDS-PAGE  
Coomassie Staining**

**Lane 1:**

MLL1/WAR Complex

**Lane 2:**

Protein Marker

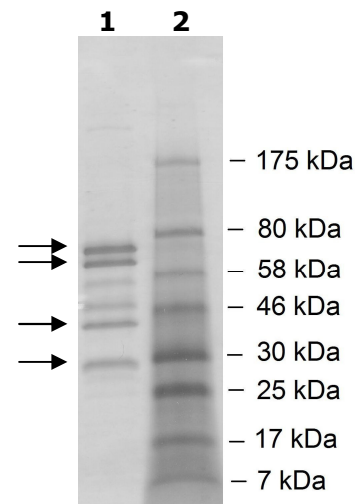
**Purity:**  $\geq$ 82%

**MW:** RbBP5: 60 kDa

Ash2L: 61 kDa

WDR5: 37 kDa

MLL1: 27 kDa



OUR PRODUCTS ARE FOR RESEARCH USE ONLY. NOT FOR DIAGNOSTIC OR THERAPEUTIC USE.

To place your order, please contact us by Phone **1.858.829.3082** Fax **1.858.481.8694**

Or you can Email us at: [info@bpsbioscience.com](mailto:info@bpsbioscience.com)

Please visit our website at: [www.bpsbioscience.com](http://www.bpsbioscience.com)



6044 Cornerstone Court W, Ste E  
San Diego, CA 92121  
Tel: 1.858.829.3082  
Fax: 1.858.481.8694  
Email: [info@bpsbioscience.com](mailto:info@bpsbioscience.com)

**Protein Sequences:**

MLL1

MHHHHHHFRFHKPEEANEPPLNPHGSARAEVHLRKSADFDMFNFLASKHRQPPEYNP  
NDEEEEEEVQLKSARRATSMPLPMPFRHLLKTSKEAVGVYRSPHGRGLFCKRND  
AGEMVIEYAGNVIRSIQTDKREKYYDSKGIGCYMFRIDDSEVVDATMHGNAARFINHS  
CEPNCYSRVINIDGQKHIVIFAMRKIYRGEELTYDYKFPIEDASNKLPCNCGAKKCRKF  
LN

WDR5

MHHHHHHATEEKKPETEAARAQTPSSSATQSKPTPVKPNYALKFTLAGHTKAVSSV  
KFSPNGEWLASSSADKLIKWGAYDGKFEKTISGHKLGISDVAWSSDSNLLVSASDDK  
TLKIWDVSSGKCLKTLKGHSNYVFCCNFNPQSNLIVSGSFDESVRWDVKTGKCLKTL  
PAHSDPVS AVHFNRDGLIVSSSYDGLCRIWDTASGQCLKTLIDDDNPPVSFVKFSPN  
GKYILAAATLDNTLKLWDYSKGKCLKTYTGHKNEKYCIFANFSVTGGKWIVSGSEDNLV  
YIWNLQTKIVQKLQGH TDVVISTACHPTENIIASAALENDKTIKLWKS DC

Ash2L

MHHHHHHDTQAGSVDEENGRQLGEVELQCGICTKWFTADTFGIDTSSCLPFMTNYSF  
HCNVCHHSGNTYFLRKQANLKEMCLSALANLTWQSRTQDEHPKTMFSKDKDIIPFID  
KYWECMTTRQRP GKMTWPNNIVKTMSKERD VFLVKEHPDPGSKDPEEDYPKFGLLD  
QDLSNIGPAYDNQKQSSAVSTSGNLNGGIAAGSSGKGRGAKRKQQDGGTTGTTKKA  
RSDPLFSAQRLPPHGYPLEHPFNKDG YRYILAEPDPHAPDPEKLELDCWAGKPIPGD  
LYRACL YERVLLALHDRAPQLKISDDRLTVVGEKGYSMVRASHGVRKGAWYFEITVD  
EMPPDTAARLGWSQPLGNLQAPLG YDKFSYSWRSKKGTKFHQSIGKHYSSGYGGG  
DVLGFYINLPEDTETAKSLPDTYKDKALIKFKSYLYFEEKDFVDKAEKSLKQTPHSEIIF  
YKNGVNQGVAYKDIFEGVYFPAISLYK SCTVSINFGPCFKYPPKDLTYRPMSDMGWG  
AVVEHTLADVLYHVETEVDGRRSPPEP

RbBP5

MHHHHHHNLELLESFGQNYPEEADGTLDCISMAL TCTFN RWG TLLAVGCNDGRIVW  
DFLTRGIAKII SAHIHPVCSLCWSRDGHKLV SASTDNIVSQWDVLSGDCDQRFRFPSP I  
LKVQYHPRDQNKVLVCPMKSAPVMLT L S DSKHV VLPVDDSDLN VVASFDRRGEYIY  
TGNAGK KILVLK TDSQDLVASFRVTTGTSNTTAI KSIEFARKGSCFLINTADRIIRVYDG  
REILTCGRDGEPEPMQKLQDLVNRTPWKKCCFSGDGEYIVAGSARQHALYIWEKSIG  
NLVKILHGTRGELLLDVAWHPVRPIIASISSGVVSIWAQNQVENWSAFAPDFKELDEN  
VEYEERESEFDIEDEDKSEPEQTGADAAEEDVDVTSVDPIAAFCSSEDELEDKALL  
YLP I APEVEDPEENPYGPPDAVQ TSLMDEGASSEK KRQSSADGSQPPKKPKTTNI  
ELQGV PNDEVHPLLGVKGDGKSKKKQAGRPKGSKGKEKDSPFKPKLYKGDRGLPL  
EGSAKGVQAELSQPLTAGGAISELL

OUR PRODUCTS ARE FOR RESEARCH USE ONLY. NOT FOR DIAGNOSTIC OR THERAPEUTIC USE.  
To place your order, please contact us by Phone **1.858.829.3082** Fax **1.858.481.8694**  
Or you can Email us at: [info@bpsbioscience.com](mailto:info@bpsbioscience.com)  
Please visit our website at: [www.bpsbioscience.com](http://www.bpsbioscience.com)