



# SZABO SCANDIC

Part of Europa Biosite

## Produktinformation



Forschungsprodukte & Biochemikalien



Zellkultur & Verbrauchsmaterial



Diagnostik & molekulare Diagnostik



Laborgeräte & Service

Weitere Information auf den folgenden Seiten!  
See the following pages for more information!



### Lieferung & Zahlungsart

siehe unsere [Liefer- und Versandbedingungen](#)

### Zuschläge

- Mindermengenzuschlag
- Trockeneiszuschlag
- Gefahrgutzuschlag
- Expressversand

### SZABO-SCANDIC HandelsgmbH

Quellenstraße 110, A-1100 Wien

T. +43(0)1 489 3961-0

F. +43(0)1 489 3961-7

[mail@szabo-scandic.com](mailto:mail@szabo-scandic.com)

[www.szabo-scandic.com](http://www.szabo-scandic.com)

[linkedin.com/company/szaboscandic](https://www.linkedin.com/company/szaboscandic) 

## Data Sheet

### NSD3 (1021-1322)

Human, recombinant, N-terminal GST-tag  
Catalog #: 51036  
Lot#: 130220-E1      Conc.: 0.44 mg/ml

**Formulated in:** 40mM Tris-HCl pH 8.0,  
110mM NaCl, 2.2mM KCl, 1.6-16mM  
Glutathione, 20% Glycerol and 3mM DTT.

**Stability:** >6 months at -80°C

#### References:

1. Morishita, M., di Luccio E., *Biochim Biophys Acta*. 2011 Dec;**1816(2)**:158-63.
2. Rahman, S., *et al.*, *Mol Cell Biol*. 2011 Jul;**31(13)**:2641-52.

#### Description:

Human Nuclear SET domain-containing protein 3 (NSD3), also known as WHSC1L1, GenBank Accession No. NM\_023034, a.a. 1021-1322, with N-terminal GST-tag, MW=61 kDa, expressed in an *E. coli* expression system.

#### Application:

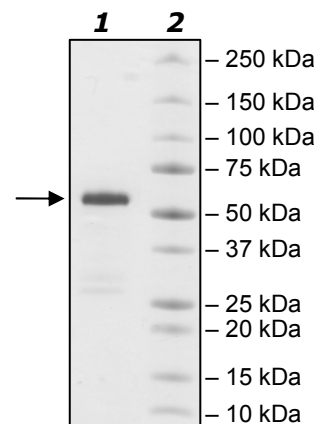
Suitable for protein binding studies, as an immunogen, or as a Western blotting control.

## Quality Assurance

#### 4-20% SDS-PAGE Coomassie staining

**Lane 1:**  
2 µg NSD3  
**Lane 2:**  
Protein Marker

**MW:** 61 kDa  
**Purity:** ≥96%



OUR PRODUCTS ARE FOR RESEARCH USE ONLY. NOT FOR DIAGNOSTIC OR THERAPEUTIC USE.

To place your order, please contact us by Phone **1.858.829.3082** Fax **1.858.481.8694**  
Or you can Email us at: [info@bpsbioscience.com](mailto:info@bpsbioscience.com)  
Please visit our website at: [www.bpsbioscience.com](http://www.bpsbioscience.com)



6044 Cornerstone Court W, Ste E  
San Diego, CA 92121  
**Tel:** 1.858.829.3082  
**Fax:** 1.858.481.8694  
**Email:** [info@bpsbioscience.com](mailto:info@bpsbioscience.com)

**Protein Sequence:**

MSPILGYWKIKGLVQPTRLLLEYLEEKYEEHLYERDEGDKWRNKKFELGLEFPNLPYYI  
DGDVKLTQSMARIYIADKHNMLGGCPKERAIEISMLEGAVLDIRYGVSRAYSKDFETLK  
VDFLSKLPEMLKMFEDRLCHKTYLNGDHVTHPDFMLYDALDVVLYMDPMCLDAFPKLV  
CFKKRIEAIPIQIDKYLKSSKYIAWPLQGWQATFGGGDHPPKSDLEVLFFQGPLGSEGDKS  
FAEGQTSINKTFKKALEEAAKRFQELKAQRESKEALEIEKNSRKPPPYKHIKANKVIG  
KVQIQVADLSEIPRCNCKPADENPCGLESECLNRMLQYECHPQVCPAGDRCQNQCF  
TKRLYPDAEIIKTERRGWGLRTRKRSIKKGEFVNEYVGELEDEECRLRIKRAHENSVTN  
FYMLTVTKDRIIDAGPKGNYSRFMNHSCNPNCETQKWTVNGDVRVGLFALCDIPAGM  
ELTFNYNLDCLGNGRTECHCGADNCSGFLGVRPKSACASTNEEKAKNAKLNKQKRRK  
IKTEPKQMLED

OUR PRODUCTS ARE FOR RESEARCH USE ONLY. NOT FOR DIAGNOSTIC OR THERAPEUTIC USE.

To place your order, please contact us by Phone **1.858.829.3082** Fax **1.858.481.8694**  
Or you can Email us at: [info@bpsbioscience.com](mailto:info@bpsbioscience.com)  
Please visit our website at: [www.bpsbioscience.com](http://www.bpsbioscience.com)