



SZABO SCANDIC

Part of Europa Biosite

Produktinformation



Forschungsprodukte & Biochemikalien



Zellkultur & Verbrauchsmaterial



Diagnostik & molekulare Diagnostik



Laborgeräte & Service

Weitere Information auf den folgenden Seiten!
See the following pages for more information!



Lieferung & Zahlungsart

siehe unsere [Liefer- und Versandbedingungen](#)

Zuschläge

- Mindermengenzuschlag
- Trockeneiszuschlag
- Gefahrgutzuschlag
- Expressversand

SZABO-SCANDIC HandelsgmbH

Quellenstraße 110, A-1100 Wien

T. +43(0)1 489 3961-0

F. +43(0)1 489 3961-7

mail@szabo-scandic.com

www.szabo-scandic.com

[linkedin.com/company/szaboscandic](https://www.linkedin.com/company/szaboscandic) 

Data Sheet

EZH2 A687V /EED/SUZ12/RbAp48/AEBP2

Human, recombinant

Catalog #: 51038

Lot #: 120622 Conc.: 0.086 mg/ml

Formulated in: 40 mM Tris-HCl, pH 8.0, 110 mM NaCl, 2.2 mM KCl, 20 mM imidazole, and 20% glycerol.

Stability: >6 months at -80 °C

References:

1. Varambally, S. *et al. Science* **322** (5908), 1695-1699 (2008).
2. Rakotobe, D. *et al., Virol. J.* **5**, 32 (2008).

Application Reference:

Morin, R.D., *et al. Nat Genet.* 2010 February; **42**(2): 181-185.

Description: Mutant version of BPS regular EZH2 5-member complex (Cat. # 51004), but with a Ala-to-Val mutation on a.a. 692 of the EZH2 protein*. Complex of human EZH2 (GenBank Accession No. NM_004456), (a-a 2-end ; A692V) with N-terminal His tag, MW= 86 kDa, human EED (NM_003797) (a-a 2-end) with N-terminal Flag tag, MW= 51 kDa, human SUZ12 (NM_015355) (a-a 2-end) with N-terminal His tag, MW = 87 kDa, Human AEBP2 (NM_153207) (a-a 2-end) with N-terminal His tag, MW= 53 kDa, and human RbAp48 (NM_005610) (a-a 2-end) with N-terminal His tag, MW = 48 kDa, co-expressed in baculovirus expression system. *This mutation is equivalent to A687V in variant 3 (GenBank Accession No. NM_001203247).

Application: Useful for the study of enzyme kinetics, screening inhibitors, and selectivity profiling.

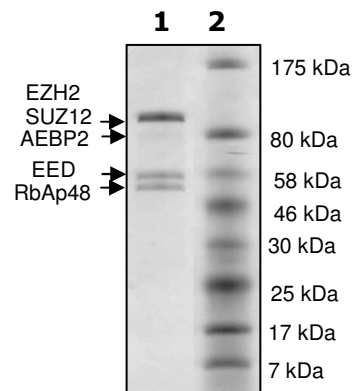
Quality Assurance

4-20% gradient SDS-PAGE Coomassie staining

Lane 1:
2.2 µg enzyme complex

Lane 2:
Protein Marker
BioLabs (#P7708L)

Purity: ≥97%



OUR PRODUCTS ARE FOR RESEARCH USE ONLY. NOT FOR DIAGNOSTIC OR THERAPEUTIC USE.

To place your order, please contact us by Phone **1.858.829.3082** Fax **1.858.481.8694**

Or you can Email us at: info@bpsbioscience.com

Please visit our website at: www.bpsbioscience.com