



# SZABO SCANDIC

Part of Europa Biosite

## Produktinformation



Forschungsprodukte & Biochemikalien



Zellkultur & Verbrauchsmaterial



Diagnostik & molekulare Diagnostik



Laborgeräte & Service

Weitere Information auf den folgenden Seiten!  
See the following pages for more information!



### Lieferung & Zahlungsart

siehe unsere [Liefer- und Versandbedingungen](#)

### Zuschläge

- Mindermengenzuschlag
- Trockeneiszuschlag
- Gefahrgutzuschlag
- Expressversand

### SZABO-SCANDIC HandelsgmbH

Quellenstraße 110, A-1100 Wien

T. +43(0)1 489 3961-0

F. +43(0)1 489 3961-7

[mail@szabo-scandic.com](mailto:mail@szabo-scandic.com)

[www.szabo-scandic.com](http://www.szabo-scandic.com)

[linkedin.com/company/szaboscandic](https://www.linkedin.com/company/szaboscandic) 

## Data Sheet

### EZH2 A677T /EED/SUZ12/RbAp48/AEBP2

Human, recombinant  
Catalog #: 51039  
Lot #: 120514      Conc.: 0.57 mg/ml

**Formulated in:** 40 mM Tris-HCl, pH 8.0, 110 mM NaCl, 2.2 mM KCl, 200 mM imidazole, and 20% glycerol.

**Stability:** >6 months at -80 °C

**References:**

1. Varambally, S. *et al. Science* **322** (5908), 1695-1699 (2008).
2. Rakotobe, D. *et al., Virol. J.* **5**, 32 (2008).

**Application Reference:**

Morin, R.D., *et al. Nat Genet.* 2010 February; **42**(2): 181-185.

**Description:** Mutant version of BPS regular EZH2 5-member complex (Cat. # 51004), but with a Ala-to-Thr mutation on a.a. 682 of the EZH2 protein. \* Complex of human EZH2 (GenBank Accession No. NM\_004456), (a.a. 2-end; A682T) with N-terminal His tag, MW= 86 kDa, human EED (NM\_003797) (a.a. 2-end) with N-terminal Flag tag, MW= 51 kDa, human SUZ12 (NM\_015355) (a.a. 2-end) with N-terminal His tag, MW = 87 kDa, Human AEBP2 (NM\_153207) (a.a. 2-end) with N-terminal His tag, MW= 53 kDa, and human RbAp48 (NM\_005610) (a.a. 2-end) with N-terminal His tag, MW = 48 kDa, co-expressed in baculovirus expression system. \*This mutation is equivalent to A677T in variant 3 (GenBank Accession No. NM\_001203247).

**Application:** Useful for the study of enzyme kinetics, screening inhibitors, and selectivity profiling.

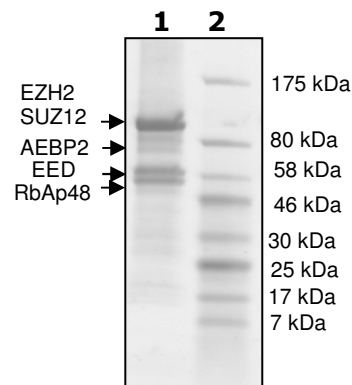
### **Quality Assurance**

#### 4-20% gradient SDS-PAGE Coomassie staining

**Lane 1:**  
8.3 µg enzyme complex

**Lane 2:**  
Protein Marker

**Purity:** ≥90%



OUR PRODUCTS ARE FOR RESEARCH USE ONLY. NOT FOR DIAGNOSTIC OR THERAPEUTIC USE.

To place your order, please contact us by Phone **1.858.829.3082** Fax **1.858.481.8694**

Or you can Email us at: [info@bpsbioscience.com](mailto:info@bpsbioscience.com)

Please visit our website at: [www.bpsbioscience.com](http://www.bpsbioscience.com)