



SZABO SCANDIC

Part of Europa Biosite

Produktinformation



Forschungsprodukte & Biochemikalien



Zellkultur & Verbrauchsmaterial



Diagnostik & molekulare Diagnostik



Laborgeräte & Service

Weitere Information auf den folgenden Seiten!
See the following pages for more information!



Lieferung & Zahlungsart

siehe unsere [Liefer- und Versandbedingungen](#)

Zuschläge

- Mindermengenzuschlag
- Trockeneiszuschlag
- Gefahrgutzuschlag
- Expressversand

SZABO-SCANDIC HandelsgmbH

Quellenstraße 110, A-1100 Wien

T. +43(0)1 489 3961-0

F. +43(0)1 489 3961-7

mail@szabo-scandic.com

www.szabo-scandic.com

[linkedin.com/company/szaboscandic](https://www.linkedin.com/company/szaboscandic) 

Data Sheet

PRMT1, GST-Tag

Human, Recombinant, N-terminal GST tag
Catalog #: 51041
Lot #: 160902-G1 **Conc.:** 0.54 mg/ml

Formulated in: 40 mM Tris-HCl, pH 8.0,
 110 mM NaCl, 2.2 mM KCl, 0.04%
 Tween-20 and 20% Glycerol

Stability: At least 6 months at -80°C .
 Avoid freeze/thaw cycles. Storing diluted
 enzyme is not recommended, if
 necessary, use carrier protein (BSA 0.1
 – 0.5%).

References:

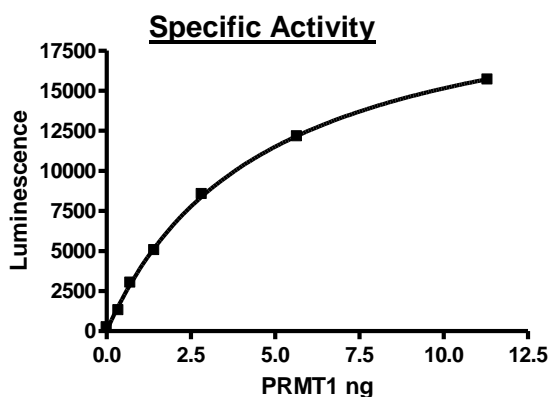
1. Sun X.J., *et al.*, *J Biol Chem.* **280(42)**, 35261-35271 (2005).
2. Rega S. *et al.*, *Mol Cell Neurosci.* **18(1)**, 68-79 (2001).

Description: Human PRMT1 (GenBank Accession No. NM_001536), amino acids 2-end, with N-terminal GST tag, MW= 68 kDa, expressed in a Baculovirus infected Sf9 cell expression system.

Assay Conditions: Enzyme was incubated with 0.25 μM of biotinylated H4 1-21 peptide with 1 μM AdoMet in HMT buffer 2A in a 10 μl reaction. 5 μl of Anti-Rabbit AlphaLISA acceptor beads (1:250) and 5 μl of Primary Antibody 4 (1:20) were added and incubation continued for 30 min. Streptavidin Donor beads (1:125) were added (10 μl) and mixture was further incubated for 15 min at RT before A-counts were measured.

Application: Useful for the study of enzyme kinetics, screening inhibitors, and selectivity profiling.

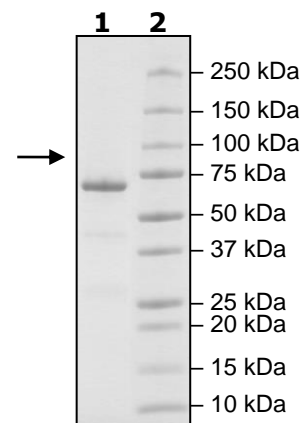
Quality Assurance



**4-20% SDS-PAGE
 Coomassie staining**

Lane 1:
 2 μg PRMT1
Lane 2:
 Protein Marker

MW: 70 kDa
Purity: $\geq 86\%$



OUR PRODUCTS ARE FOR RESEARCH USE ONLY. NOT FOR DIAGNOSTIC OR THERAPEUTIC USE.

To place your order, please contact us by Phone **1.858.202.1401** or **1.858.829.3082**, Fax **1.858.481.8694**

Or you can Email us at: info@bpsbioscience.com
 Please visit our website at: www.bpsbioscience.com