



# SZABO SCANDIC

Part of Europa Biosite

## Produktinformation



Forschungsprodukte & Biochemikalien



Zellkultur & Verbrauchsmaterial



Diagnostik & molekulare Diagnostik



Laborgeräte & Service

Weitere Information auf den folgenden Seiten!  
See the following pages for more information!



### Lieferung & Zahlungsart

siehe unsere [Liefer- und Versandbedingungen](#)

### Zuschläge

- Mindermengenzuschlag
- Trockeneiszuschlag
- Gefahrgutzuschlag
- Expressversand

### SZABO-SCANDIC HandelsgmbH

Quellenstraße 110, A-1100 Wien

T. +43(0)1 489 3961-0

F. +43(0)1 489 3961-7

[mail@szabo-scandic.com](mailto:mail@szabo-scandic.com)

[www.szabo-scandic.com](http://www.szabo-scandic.com)

[linkedin.com/company/szaboscandic](https://www.linkedin.com/company/szaboscandic) 

## Data Sheet

### PRMT4/CARM1 (HEK293)

Human, recombinant, N-terminal FLAG tag  
**Catalog #:** 51047  
**Lot#:** 130204      **Conc.:** 0.2 mg/ml

**Formulated in:** 40 mm Tris-HCl, pH 8.0,  
110 mm NaCl, 2.2 mm KCl, 80 ng/μl flag  
peptide, 20% glycerol, and 3 mM DTT.

**Stability:** >6 months at -80 °C

#### References:

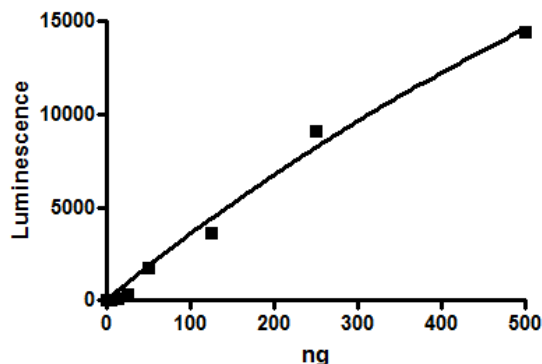
1. Li H. *et al.*, *J. Biol. Chem.* **277 (47)**, 44623-44630 (2002).
2. Frieze S. *et al.*, *Cancer Res.* **68 (1)**, 301-306 (2008).

**Description:** Human PRMT4/CARM1 (GenBank Accession No. NM\_199141), amino-acids 2-end, with N-terminal FLAG tag, MW=66 kDa, expressed in a FreeStyle 293-F cells.

**Assay conditions:** 50 μl reaction mix (1x HMT Assay Buffer 5, BPS Cat# 52191 and 5-1000 ng methyltransferase PRMT4) add to the wells coated with the substrate on a Thermo HBC Neutravidin black plate. Incubate for 1 hr. Add antibody against methylated substrate. Incubate for 1 hr. Then, add secondary HRP-labeled antibody and incubate for 30 min. Finally, add HRP chemiluminescent substrates and read luminescence.

**Application:** Useful for the study of enzyme kinetics, screening inhibitors, and selectivity profiling.

## Quality Assurance

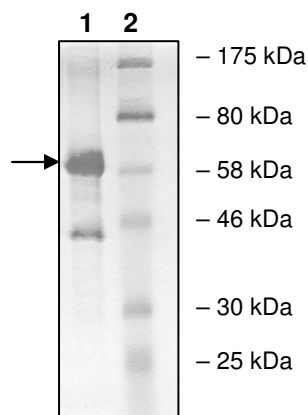


### 10% SDS-PAGE Coomassie staining

**Lane 1:**  
2 μg PRMT4/CARM1

**Lane 2:**  
Protein Marker

**MW:** 66 kDa  
**Purity:** ≥65%



OUR PRODUCTS ARE FOR RESEARCH USE ONLY. NOT FOR DIAGNOSTIC OR THERAPEUTIC USE.

To place your order, please contact us by Phone **1.858.829.3082** Fax **1.858.481.8694**

Or you can Email us at: [info@bpsbioscience.com](mailto:info@bpsbioscience.com)

Please visit our website at: [www.bpsbioscience.com](http://www.bpsbioscience.com)