



SZABO SCANDIC

Part of Europa Biosite

Produktinformation



Forschungsprodukte & Biochemikalien



Zellkultur & Verbrauchsmaterial



Diagnostik & molekulare Diagnostik



Laborgeräte & Service

Weitere Information auf den folgenden Seiten!
See the following pages for more information!



Lieferung & Zahlungsart

siehe unsere [Liefer- und Versandbedingungen](#)

Zuschläge

- Mindermengenzuschlag
- Trockeneiszuschlag
- Gefahrgutzuschlag
- Expressversand

SZABO-SCANDIC HandelsgmbH

Quellenstraße 110, A-1100 Wien

T. +43(0)1 489 3961-0

F. +43(0)1 489 3961-7

mail@szabo-scandic.com

www.szabo-scandic.com

[linkedin.com/company/szaboscandic](https://www.linkedin.com/company/szaboscandic) 

Data Sheet

Native Nucleosome (HEK293)

Human, recombinant

Catalog #: 52015

Lot #: 140326-MC **Conc.:** 0.65 mg/ml (by Bradford)

Formulated in: 10 mM Tris-HCl, pH 7.2, 5 mM NaCl, 1 mM MgCl₂, 0.5 mM CaCl₂, 125 mM EDTA, and 10 mM Sodium Butyrate

Stability: At least 6 months at -80°C . Avoid multiple freeze/thaw cycles. Storing diluted protein is not recommended, if necessary, use carrier protein (BSA 0.1 – 0.5%).

References:

1. Meagher, R.B., Mussar, K.J., *Epigenetics Chromatin* 2012 Jul 20;**5(1)**:11.
2. Huang, H., *et al.*, *Biosystems* 2012 Aug;**109(2)**:214-9.

Description: Nucleosomes prepared from mammalian HEK293 cells as a substrate for histone methyltransferase assay.

Quantity: 1 ml for 50 reactions in a 96-well format

Application: Substrate for histone methyltransferase assays. Ideal for screening small molecular inhibitors of histone methyltransferases for drug discovery and HTS applications.

Quality Assurance

4-20% SDS-PAGE **Coomassie staining**

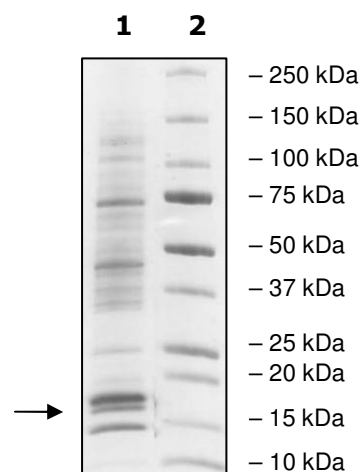
Lane 1:

4 μg

Lane 2:

Protein Marker

Purity: $\geq 90\%$



OUR PRODUCTS ARE FOR RESEARCH USE ONLY. NOT FOR DIAGNOSTIC OR THERAPEUTIC USE.

To place your order, please contact us by Phone **1.858.829.3082** Fax **1.858.481.8694**

Or you can Email us at: info@bpsbioscience.com

Please visit our website at: www.bpsbioscience.com