



SZABO SCANDIC

Part of Europa Biosite

Produktinformation



Forschungsprodukte & Biochemikalien



Zellkultur & Verbrauchsmaterial



Diagnostik & molekulare Diagnostik



Laborgeräte & Service

Weitere Information auf den folgenden Seiten!
See the following pages for more information!



Lieferung & Zahlungsart

siehe unsere [Liefer- und Versandbedingungen](#)

Zuschläge

- Mindermengenzuschlag
- Trockeneiszuschlag
- Gefahrgutzuschlag
- Expressversand

SZABO-SCANDIC HandelsgmbH

Quellenstraße 110, A-1100 Wien

T. +43(0)1 489 3961-0

F. +43(0)1 489 3961-7

mail@szabo-scandic.com

www.szabo-scandic.com

[linkedin.com/company/szaboscandic](https://www.linkedin.com/company/szaboscandic) 

Data Sheet

Histone H3 (full length)

Human, recombinant, N-terminal His-tag
Catalog #: 52027
 Lot#: 130913 Conc.: 0.87 mg/ml

Formulated in: 8 mM PBS pH 7.4, 110 mM NaCl, 2.2mM KCl, 3mM DTT, 20% glycerol.

Stability: >6 months at -80°C

References:

1. Loyola, A. *et al.*, *Mol. Cell* **24** (2), 309-316 (2006).
2. Hans, F. and Dimitrov, S. *Oncogene* **20**(24), 3021-3027 (2001).

Description:

Human Histone 3 (HIST1H3E), GenBank Accession No. NM_003532, a.a. 2-136(end) with N-terminal His-tag MW = 15.4 kDa, expressed in an *E. coli* expression system.

Methylation Assay:

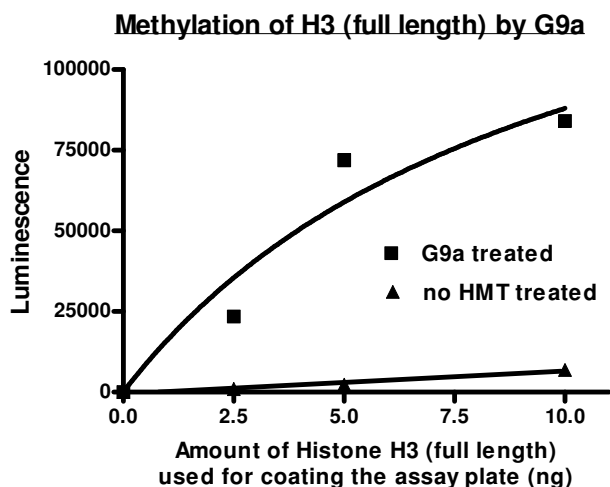
Histone H3 was coated onto a 96-well plate, and methylation by G9a was carried out at room temperature for 60 min. Methylated Histone H3 was detected using Chemiluminescence assay.

Application:

Useful for the study of enzyme kinetics, screening inhibitors, and selectivity profiling.

Quality Assurance

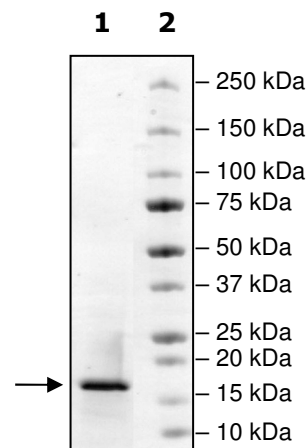
Histone H3, Methylation Assay



**4-20% SDS-PAGE
Coomassie staining**

Lane 1:
 2µg Histone H3
Lane 2:
 Protein Marker

MW: 16.4 kDa
Purity: ≥90%



OUR PRODUCTS ARE FOR RESEARCH USE ONLY. NOT FOR DIAGNOSTIC OR THERAPEUTIC USE.

To place your order, please contact us by Phone **1.858.829.3082** Fax **1.858.481.8694**
 Or you can Email us at: info@bpsbioscience.com
 Please visit our website at: www.bpsbioscience.com