



SZABO SCANDIC

Part of Europa Biosite

Produktinformation



Forschungsprodukte & Biochemikalien



Zellkultur & Verbrauchsmaterial



Diagnostik & molekulare Diagnostik



Laborgeräte & Service

Weitere Information auf den folgenden Seiten!
See the following pages for more information!



Lieferung & Zahlungsart

siehe unsere [Liefer- und Versandbedingungen](#)

Zuschläge

- Mindermengenzuschlag
- Trockeneiszuschlag
- Gefahrgutzuschlag
- Expressversand

SZABO-SCANDIC HandelsgmbH

Quellenstraße 110, A-1100 Wien

T. +43(0)1 489 3961-0

F. +43(0)1 489 3961-7

mail@szabo-scandic.com

www.szabo-scandic.com

[linkedin.com/company/szaboscandic](https://www.linkedin.com/company/szaboscandic) 

Data Sheet

SETD2 (1418 – 1714)

Human, recombinant, N-terminal GST tag

Catalog #: 53019

Lot#: 130625-E3 **Conc.:** 0.52 mg/ml

Formulated in: 40 mM Tris-HCl, pH 8.0, 110 mM NaCl, 2.2 mM KCl, 16 mM glutathione, 20% glycerol.

Stability: >6 months at –80°C. Avoid freeze/thaw cycles.

References:

1. Sun X.J., *et al.*, *J. Biol. Chem.* **280(42)**, 35261-35271 (2005).
2. Rega S. *et al.*, *Mol. Cell Neurosci.* **18(1)**, 68-79 (2001).

Description: Human SETD2, also known as SET2 and HYPB, (GenBank Accession No. NM_014159), amino acids 1418-1714, with N-terminal GST tag, MW = 60.9 kDa, expressed in an *E. coli* expression system.

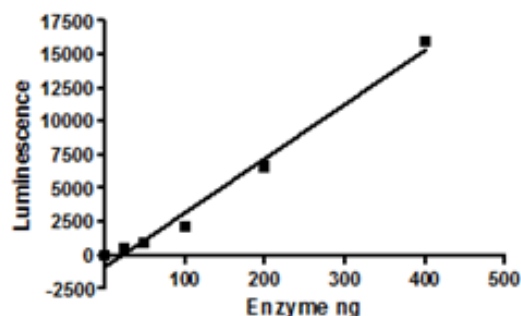
Assay conditions:

50 µl reaction mix (50 mM TRIS pH 8.8, 5 mM MgCl₂, 4 mM DTT, 20 µM S-adenosyl-methionine, and varying amounts of SETD2) add to the wells coated with the substrate. Incubate at room temp for 1 hr. Add antibody against methylated K36 residue of histone H3, incubate 1 hr. Then incubate 30 min. with HRP-labeled secondary antibody. Finally, add HRP chemiluminescent substrate and read luminescence.

Application: Useful for the study of enzyme kinetics, screening inhibitors, and selectivity profiling.

Quality Assurance

Specific Activity



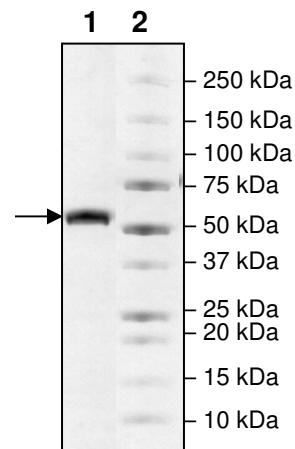
4-20% SDS-PAGE Coomassie staining

Lane 1:
2.5 µg SETD2

Lane 2:
Protein Marker

MW: 61 kDa

Purity: ≥90%



OUR PRODUCTS ARE FOR RESEARCH USE ONLY. NOT FOR DIAGNOSTIC OR THERAPEUTIC USE.

To place your order, please contact us by Phone **1.858.202.1401** or **1.858.481.8694**, Fax **1.858.259.5734**

Or you can Email us at: info@bpsbioscience.com
 Please visit our website at: www.bpsbioscience.com



6044 Cornerstone Court West, Suite E
San Diego, CA 92121
Tel: 1.858.829.3082
Fax: 1.858.481.8694
Email: info@bpsbioscience.com

Sequence:

MSPILGYWKIKGLVQPTRLLLEYLEEKYEEHLYERDEGDKWRNKKFELGLEFPNLPYYI
DGDVKLTQSMAIRYIADKHNMLGGCPKERAIEISMLEGAVLDIRYGVSRIAYSKDFETLK
VDFLSKLPEMLKMFEDRLCHKTYLNGDHVTHPDFMLYDALDVVLYMDPMCLDAFPKLV
CFKKRIEAIPQIDKYLKSSKYIAWPLQGQWQATFGGGDHPPKSDLEVLFGGPLGSDGELQ
DRKKVRVEVEQGETSVPPGSALVGPSCVMDDFRDPQRWKECAKQGKMPCYFDLIEE
NVYLTERKKNKSHRDIKRMQCECTPLSKDERAQGEIACGEDCLNRLLMIECSSRCPN
GDYCSNRRFQRKQHADVEVILTEKKGWGLRAAKDLPSNTFVLEYCGEVLHDHKEFKA
RVKEYARNKNIHYYFMALKNDEIIDATQKGNCSRFRMNHSCEPNCETQKWTVNGQLRV
GFFTTKLVPSSGSELTFDYQFQRYGKEAQKCFCSANCRGYLGGENRVSIRAAGGKM
KKERSRKKDS

Red: GST Tag

Blue: Linker

Black: SETD2(aa 1418 – 1714)

OUR PRODUCTS ARE FOR RESEARCH USE ONLY. NOT FOR DIAGNOSTIC OR THERAPEUTIC USE.

To place your order, please contact us by Phone **1.858.202.1401** or **1.858.481.8694**, Fax
1.858.259.5734

Or you can Email us at: info@bpsbioscience.com

Please visit our website at: www.bpsbioscience.com