



# SZABO SCANDIC

Part of Europa Biosite

## Produktinformation



Forschungsprodukte & Biochemikalien



Zellkultur & Verbrauchsmaterial



Diagnostik & molekulare Diagnostik



Laborgeräte & Service

Weitere Information auf den folgenden Seiten!  
See the following pages for more information!



### Lieferung & Zahlungsart

siehe unsere [Liefer- und Versandbedingungen](#)

### Zuschläge

- Mindermengenzuschlag
- Trockeneiszuschlag
- Gefahrgutzuschlag
- Expressversand

### SZABO-SCANDIC HandelsgmbH

Quellenstraße 110, A-1100 Wien

T. +43(0)1 489 3961-0

F. +43(0)1 489 3961-7

[mail@szabo-scandic.com](mailto:mail@szabo-scandic.com)

[www.szabo-scandic.com](http://www.szabo-scandic.com)

[linkedin.com/company/szaboscandic](https://www.linkedin.com/company/szaboscandic) 

## Data Sheet

### L3MBTL1

Human, recombinant, N-terminal GST tag

**Catalog #:** 55000

Lot #: 120925      Conc.: 0.88 mg/ml

**Formulated in:** 40 mM Tris-HCl, pH 8.0,  
110 mM NaCl, 2.2 mM KCl, 1 mM DTT, 20  
mM Glutathione, and 20% glycerol.

**Stability:** >6 months at -80°C

#### References:

1. Koga, H., *et al.*, *Oncogene*. 1999 Jul 1;**18(26)**:3799-809.
2. Trojer, P., *et al.*, *Cell*. 2007 Jun 1;**129(5)**:915-28.
3. Min, J., *et al.* *Nat. Struct. & Mol. Biol.* 2007;14:1229 – 1230.

#### Description:

Human lethal(3)malignant brain tumor-like protein 1 (L3MBTL1), GenBank Accession No. NM\_015478), a.a. 191-530 with N-terminal GST tag, MW = 65.5 kDa, expressed in an *E. coli* cell expression system.

#### Application:

Useful for the study of Polycomb group (PcG) proteins, screening inhibitors, and selectivity profiling.

## Quality Assurance

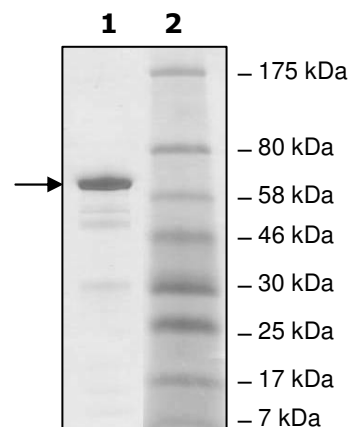
### 10% SDS-PAGE Coomassie staining

**Lane 1:**  
3 µg L3MBTL1

**Lane 2:**  
Protein Marker

**MW:** 65.5 kDa

**Purity:** ≥88%



OUR PRODUCTS ARE FOR RESEARCH USE ONLY. NOT FOR DIAGNOSTIC OR THERAPEUTIC USE.

To place your order, please contact us by Phone **1.858.829.3082** Fax **1.858.481.8694**

Or you can Email us at: [info@bpsbioscience.com](mailto:info@bpsbioscience.com)

Please visit our website at: [www.bpsbioscience.com](http://www.bpsbioscience.com)



6044 Cornerstone Court West, Suite E  
San Diego, CA 92121  
Tel: 1.858.829.3082  
Fax: 1.858.481.8694  
Email: [info@bpsbioscience.com](mailto:info@bpsbioscience.com)

**Sequence:**

MSPILGYWKIKGLVQPTRLLLEYLEEKYEEHLYERDEGDKWRNKKFELGLEFPNLPYYI  
DGDVKLTQSMIIRYIADKHNMLGGCPKERAIEISMLEGAVLDIRYGVSRAYSDFETLK  
VDFLSKLPEMLKMFEDRLCHKTYLNGDHVTHPDFMLYDALDVVLYMDPMCLDAFPKLV  
CFKKRIEAIQIDKYLKSSKYIAWPLQGWQATFGGGDHPPKSDLEVLFQGPLGSEWSS  
SQPATGEKKECWSWESYLEEQKAITAPVSLFQDSQAVTHNKNGFKLGMKLEGIDPQ  
HPSMYFILTVAEVCGYRLRLHFDGYSECHDFWVNANSPDIHPAGWFEKTGHKLQPPK  
GYKEEFSWSQYLRSTRAQAAPKHLFVSQSHSPPLGFQVGMKLEAVDRMNPSLVC  
VASVTDVDSRFLVHFDNWDDTYDYWCDPSSPYIHPVGCQKQGGKPLTPPQDYPDP  
DNFCWEKYLEETGASAVPTWAFKVRPPHSFLVNMKLEAVDRRNPALIRVASVEDVED  
HRIKIHF DGWSHG YDFWIDADHPDIHPAGWC SKTGHPLQPPLGPREPSSASPGG

OUR PRODUCTS ARE FOR RESEARCH USE ONLY. NOT FOR DIAGNOSTIC OR THERAPEUTIC USE.

To place your order, please contact us by Phone **1.858.829.3082** Fax **1.858.481.8694**  
Or you can Email us at: [info@bpsbioscience.com](mailto:info@bpsbioscience.com)  
Please visit our website at: [www.bpsbioscience.com](http://www.bpsbioscience.com)