



# SZABO SCANDIC

Part of Europa Biosite

## Produktinformation



Forschungsprodukte & Biochemikalien



Zellkultur & Verbrauchsmaterial



Diagnostik & molekulare Diagnostik



Laborgeräte & Service

Weitere Information auf den folgenden Seiten!  
See the following pages for more information!



### Lieferung & Zahlungsart

siehe unsere [Liefer- und Versandbedingungen](#)

### Zuschläge

- Mindermengenzuschlag
- Trockeneiszuschlag
- Gefahrgutzuschlag
- Expressversand

### SZABO-SCANDIC HandelsgmbH

Quellenstraße 110, A-1100 Wien

T. +43(0)1 489 3961-0

F. +43(0)1 489 3961-7

[mail@szabo-scandic.com](mailto:mail@szabo-scandic.com)

[www.szabo-scandic.com](http://www.szabo-scandic.com)

[linkedin.com/company/szaboscandic](https://www.linkedin.com/company/szaboscandic) 

## Data Sheet

### CHD2

Human, recombinant, N-terminal GST-tag  
Catalog #: 55005  
Lot #: 121029-G1      Conc.: 0.51 mg/ml

**Formulated in:** 40 mM Tris-HCl, pH 8.0, 110 mM NaCl, 2.2 mM KCl, and 20% glycerol.

**Stability:** >6 months at -80°C

**References:**

1. Woodage, T., *et al.*, *Proc Natl Acad Sci USA*. 1997 Oct 14;**94(21)**:11472-7.
2. Harada, A., *et al.*, *EMBO J*. 2012 May 8;**31(13)**:2994-3007.

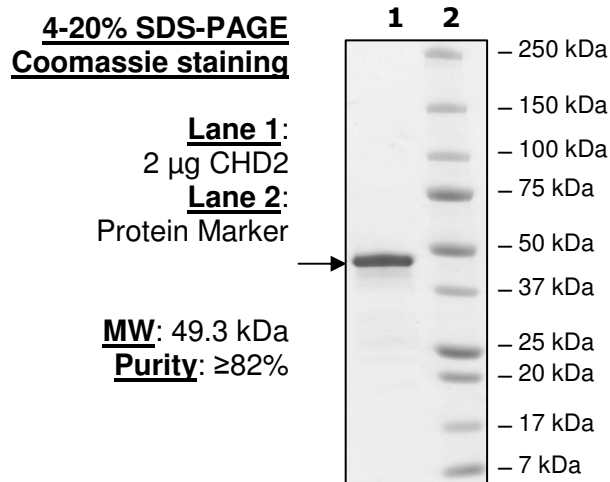
**Description:**

Human chromodomain helicase DNA binding protein 2, or CHD2, (GenBank Accession No. NM\_001271) a.a. 260-456(end), with N-terminal GST-tag, MW=49.3 kDa, expressed in an *E. coli* cell expression system.

**Application:**

Useful for protein binding assays, screening inhibitors, and selectivity profiling.

## Quality Assurance



OUR PRODUCTS ARE FOR RESEARCH USE ONLY. NOT FOR DIAGNOSTIC OR THERAPEUTIC USE.

To place your order, please contact us by Phone **1.858.829.3082** Fax **1.858.481.8694**  
Or you can Email us at: [info@bpsbioscience.com](mailto:info@bpsbioscience.com)  
Please visit our website at: [www.bpsbioscience.com](http://www.bpsbioscience.com)



6044 Cornerstone Court W, Ste E  
San Diego, CA 92121  
**Tel:** 1.858.829.3082  
**Fax:** 1.858.481.8694  
**Email:** [info@bpsbioscience.com](mailto:info@bpsbioscience.com)

**Sequence:**

MSPILGYWKIKGLVQPTRLLLEYLEEKYEEHLYERDEGDKWRNKKFELGLEFPNLPYYI  
DGDVKLTQSMARIYIADKHNMLGGCPKERAIEISMLEGAVLDIRYGVSRAYSDFETLK  
VDFLSKLPEMLKMFEDRLCHKTYLNGDHVTHPDFMLYDALDVVLYMDPMCLDAFPKLV  
CFKKRIEAIQIDKYLKSSKYIAWPLQGQWQATFGGGDHPPKSDLEVLFGGPLGSETIE  
KVLDSRLGKKGATGASTTVYAIEANGDPSGDFDTEKDEGEIQYLIKWKGWSYIHSTW  
ESEESLQQQKVKGLKKLENFKKKEDEIKQWLGKVSPEDVEYFNCQQELASELNKQY  
QIVERVIAVKTSKSTLGQTDPAHSRKPAPSNEPEYLCKWMGLPYSECSWEDEALIG  
KKFQNCIDSFHSRNNSKTIPTR

OUR PRODUCTS ARE FOR RESEARCH USE ONLY. NOT FOR DIAGNOSTIC OR THERAPEUTIC USE.

To place your order, please contact us by Phone **1.858.829.3082** Fax **1.858.481.8694**  
Or you can Email us at: [info@bpsbioscience.com](mailto:info@bpsbioscience.com)  
Please visit our website at: [www.bpsbioscience.com](http://www.bpsbioscience.com)