



SZABO SCANDIC

Part of Europa Biosite

Produktinformation



Forschungsprodukte & Biochemikalien



Zellkultur & Verbrauchsmaterial



Diagnostik & molekulare Diagnostik



Laborgeräte & Service

Weitere Information auf den folgenden Seiten!
See the following pages for more information!



Lieferung & Zahlungsart

siehe unsere [Liefer- und Versandbedingungen](#)

Zuschläge

- Mindermengenzuschlag
- Trockeneiszuschlag
- Gefahrgutzuschlag
- Expressversand

SZABO-SCANDIC HandelsgmbH

Quellenstraße 110, A-1100 Wien

T. +43(0)1 489 3961-0

F. +43(0)1 489 3961-7

mail@szabo-scandic.com

www.szabo-scandic.com

[linkedin.com/company/szaboscandic](https://www.linkedin.com/company/szaboscandic) 

Data Sheet

CDY1

Human, recombinant, N-terminal GST-tag
Catalog #: 55007
Lot #: 121029-G Conc.: 0.08 mg/ml

Formulated in: 40 mM Tris-HCl, pH 8.0, 110 mM NaCl, 2.2 mM KCl, and 20% glycerol.

Stability: >6 months at -80°C

References:

1. Fischle, W., *et al.*, *J Biol Chem.* 2008 Jul 11;**283(28)**:19626-35.
2. Kleiman, S.E., *et al.*, *Fertil Steril.* 2011 Jun;**95(7)**:2297-302.

Description:

Human chromodomain protein Y-linked 1 (CDY1), also known as CDY and testis-specific chromodomain protein Y 1, (GenBank Accession No. NM_170723) a.a. 2-90, with N-terminal GST-tag, MW=37.6 kDa, expressed in an *E. coli* cell expression system.

Application:

Useful for protein binding assays, screening inhibitors, and selectivity profiling.

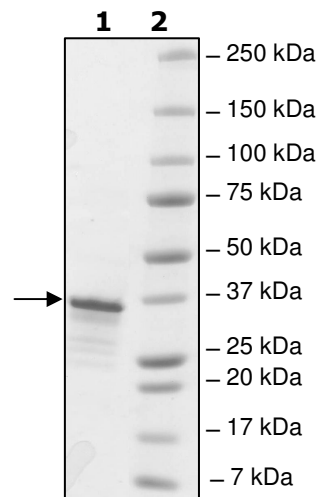
Quality Assurance

**4-20% SDS-PAGE
Coomassie staining**

Lane 1:
2 µg CDY1

Lane 2:
Protein Marker

MW: 37.6 kDa
Purity: ≥73%



OUR PRODUCTS ARE FOR RESEARCH USE ONLY. NOT FOR DIAGNOSTIC OR THERAPEUTIC USE.

To place your order, please contact us by Phone **1.858.829.3082** Fax **1.858.481.8694**
Or you can Email us at: info@bpsbioscience.com
Please visit our website at: www.bpsbioscience.com



6044 Cornerstone Court W, Ste E
San Diego, CA 92121
Tel: 1.858.829.3082
Fax: 1.858.481.8694
Email: info@bpsbioscience.com

Sequence:

MSPILGYWKIKGLVQPTRLLEYLEEKYEEHLYERDEGDKWRNKKFELGLEFPNLPYYI
DGDVKLTQSMARIYIADKHNMLGGCPKERAEISMLEGAVLDIRYGVSRAYSDFETLK
VDFLSKLPEMLKMFEDRLCHKTYLNGDHVTHPDFMLYDALDVVLYMDPMCLDAFPKLV
CFKKRIEAIQIDKYLKSSKYIAWPLQGQATFGGGDHPPKSDLEVLFGGPLGSASQEF
EVEAIVDKRQDKNGNTQYLVRWKGYDKQDDTWEPEQHLMNCEKCVHDFNRRQTEK
QKCLTWTTTSRIFSNNARRRSTSRSTKANY

OUR PRODUCTS ARE FOR RESEARCH USE ONLY. NOT FOR DIAGNOSTIC OR THERAPEUTIC USE.

To place your order, please contact us by Phone **1.858.829.3082** Fax **1.858.481.8694**
Or you can Email us at: info@bpsbioscience.com
Please visit our website at: www.bpsbioscience.com