



# SZABO SCANDIC

Part of Europa Biosite

## Produktinformation



Forschungsprodukte & Biochemikalien



Zellkultur & Verbrauchsmaterial



Diagnostik & molekulare Diagnostik



Laborgeräte & Service

Weitere Information auf den folgenden Seiten!  
See the following pages for more information!



### Lieferung & Zahlungsart

siehe unsere [Liefer- und Versandbedingungen](#)

### Zuschläge

- Mindermengenzuschlag
- Trockeneiszuschlag
- Gefahrgutzuschlag
- Expressversand

### SZABO-SCANDIC HandelsgmbH

Quellenstraße 110, A-1100 Wien

T. +43(0)1 489 3961-0

F. +43(0)1 489 3961-7

[mail@szabo-scandic.com](mailto:mail@szabo-scandic.com)

[www.szabo-scandic.com](http://www.szabo-scandic.com)

[linkedin.com/company/szaboscandic](https://www.linkedin.com/company/szaboscandic)

## Data Sheet

### CBX1

Human, recombinant, N-terminal GST-tag  
Catalog #: 55009  
Lot #: 121101-D      Conc.: 0.42 mg/ml

**Formulated in:** 40 mM Tris-HCl, pH 8.0, 110 mM NaCl, 2.2 mM KCl, and 20% glycerol.

**Stability:** >6 months at -80 °C

**References:**

1. Furuta, K., *et al.*, *Chromosoma*. 1997 Jun;**106(1)** :11-9.
2. Ekblad, C.M., *et al.*, *EMBO Rep*. 2005 Jul;**6(7)** :675-80.

**Description:**

Human chromobox homolog 1 (CBX1), also known as p25beta, M31, HP1-beta, and MOD1, (GenBank Accession No. NM\_006807) a.a. 2-185(end), with N-terminal GST-tag, MW=48.1 kDa, expressed in an *E. coli* cell expression system.

**Application:**

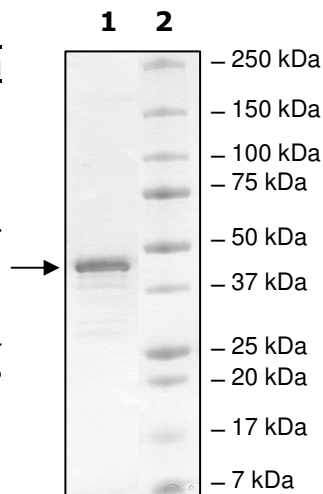
Useful for protein binding assays, screening inhibitors, and selectivity profiling.

## Quality Assurance

**4-20% SDS-PAGE  
Coomassie staining**

**Lane 1:**  
2 µg CBX1  
**Lane 2:**  
Protein Marker

**MW:** 48.1 kDa  
**Purity:** ≥78%



OUR PRODUCTS ARE FOR RESEARCH USE ONLY. NOT FOR DIAGNOSTIC OR THERAPEUTIC USE.

To place your order, please contact us by Phone **1.858.829.3082** Fax **1.858.481.8694**  
Or you can Email us at: [info@bpsbioscience.com](mailto:info@bpsbioscience.com)  
Please visit our website at: [www.bpsbioscience.com](http://www.bpsbioscience.com)



6044 Cornerstone Court W, Ste E  
San Diego, CA 92121  
**Tel:** 1.858.829.3082  
**Fax:** 1.858.481.8694  
**Email:** [info@bpsbioscience.com](mailto:info@bpsbioscience.com)

**Sequence:**

MSPILGYWKIKGLVQPTRLLEYLEEKYEEHLYERDEGDKWRNKKFELGLEFPNLPYYI  
DGDVKLTQSMARIYIADKHNMLGGCPKERAIEISMLEGAVLDIRYGVSRAYSDFETLK  
VDFLSKLPEMLKMFEDRLCHKTYLNGDHVTHPDFMLYDALDVVLYMDPMCLDAFPKLV  
CFKKRIEAIQIDKYLKSSKYIAWPLQGQATFGGGDHPPKSDLEVLFGGPLGSGKKQ  
NKKKVEEVLEEEEEYYVEKVLDRRVVKGKVEYLLKWKGFSDDEDNTWEPEENLDCP  
DLIAEFLQSQKTAHETDKSEGGKRKADSDSEDKGEESKPKKKKEESEKPRGFARGL  
EPERIIGATDSSGELMFLMKWKNSEADLVPKAEANVKCPQVVISFYEERLTWHSYPS  
EDDDKKDDKN

OUR PRODUCTS ARE FOR RESEARCH USE ONLY. NOT FOR DIAGNOSTIC OR THERAPEUTIC USE.

To place your order, please contact us by Phone **1.858.829.3082** Fax **1.858.481.8694**  
Or you can Email us at: [info@bpsbioscience.com](mailto:info@bpsbioscience.com)  
Please visit our website at: [www.bpsbioscience.com](http://www.bpsbioscience.com)