



SZABO SCANDIC

Part of Europa Biosite

Produktinformation



Forschungsprodukte & Biochemikalien



Zellkultur & Verbrauchsmaterial



Diagnostik & molekulare Diagnostik



Laborgeräte & Service

Weitere Information auf den folgenden Seiten!
See the following pages for more information!



Lieferung & Zahlungsart

siehe unsere [Liefer- und Versandbedingungen](#)

Zuschläge

- Mindermengenzuschlag
- Trockeneiszuschlag
- Gefahrgutzuschlag
- Expressversand

SZABO-SCANDIC HandelsgmbH

Quellenstraße 110, A-1100 Wien

T. +43(0)1 489 3961-0

F. +43(0)1 489 3961-7

mail@szabo-scandic.com

www.szabo-scandic.com

[linkedin.com/company/szaboscandic](https://www.linkedin.com/company/szaboscandic) 

Data Sheet

CBX2

Human, recombinant, N-terminal GST-tag
Catalog #: 55011
Lot #: 121109 Conc.: 0.55 mg/ml

Formulated in: 40 mM Tris-HCl, pH 8.0, 110 mM NaCl, 2.2 mM KCl, 16 mM glutathione, and 20% glycerol.

Stability: >6 months at -80 °C

References:

1. Völkel, P., *et al.*, *Epigenetics*. 2012 May ;**7(5)** :482-91.
2. Morey, L., *et al.*, *Cell Stem Cell*. 2012 Jan 6 ;**10(1)** :47-62.

Description:

Human chromobox homolog 2 (CBX2), also known as SRXY5 and cell division cycle associated 6 (CDCA6), GenBank Accession No. NM_005189, a.a. 2-90, with N-terminal GST-tag, MW=37.3 kDa, expressed in an *E. coli* cell expression system.

Application:

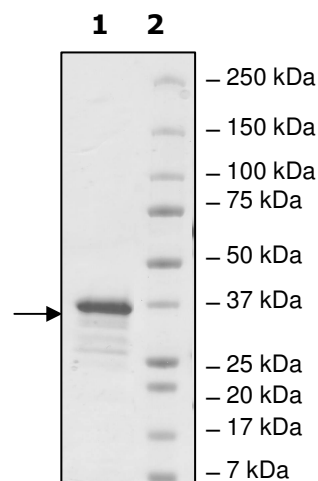
Useful for protein binding assays, screening inhibitors, and selectivity profiling.

Quality Assurance

**4-20% SDS-PAGE
Coomassie staining**

Lane 1:
2.2 µg CBX2
Lane 2:
Protein Marker

MW: 37.3 kDa
Purity: ≥79%



OUR PRODUCTS ARE FOR RESEARCH USE ONLY. NOT FOR DIAGNOSTIC OR THERAPEUTIC USE.

To place your order, please contact us by Phone **1.858.829.3082** Fax **1.858.481.8694**
Or you can Email us at: info@bpsbioscience.com
Please visit our website at: www.bpsbioscience.com



6044 Cornerstone Court W, Ste E
San Diego, CA 92121
Tel: 1.858.829.3082
Fax: 1.858.481.8694
Email: info@bpsbioscience.com

Sequence:

MSPILGYWKIKGLVQPTRLLEYLEEKYEEHLYERDEGDKWRNKKFELGLEFPNLPYYI
DGDVKLTQSMARIYIADKHNMLGGCPKERAEISMLEGAVLDIRYGVSRAYSDFETLK
VDFLSKLPEMLKMFEDRLCHKTYLNGDHVTHPDFMLYDALDVVLYMDPMCLDAFPKLV
CFKKRIEAIQIDKYLKSSKYIAWPLQGQATFGGGDHPPKSDLEVLFGGPLGSEELSS
VGEQVFAAECILSKRLRKGKLEYLVKWRGWSSKHNSWEPEENILDPRLLLAFQKKEH
EKEVQNRKRGRPRGRPRKLTAMSSCS

OUR PRODUCTS ARE FOR RESEARCH USE ONLY. NOT FOR DIAGNOSTIC OR THERAPEUTIC USE.

To place your order, please contact us by Phone **1.858.829.3082** Fax **1.858.481.8694**
Or you can Email us at: info@bpsbioscience.com
Please visit our website at: www.bpsbioscience.com