



SZABO SCANDIC

Part of Europa Biosite

Produktinformation



Forschungsprodukte & Biochemikalien



Zellkultur & Verbrauchsmaterial



Diagnostik & molekulare Diagnostik



Laborgeräte & Service

Weitere Information auf den folgenden Seiten!
See the following pages for more information!



Lieferung & Zahlungsart

siehe unsere [Liefer- und Versandbedingungen](#)

Zuschläge

- Mindermengenzuschlag
- Trockeneiszuschlag
- Gefahrgutzuschlag
- Expressversand

SZABO-SCANDIC HandelsgmbH

Quellenstraße 110, A-1100 Wien

T. +43(0)1 489 3961-0

F. +43(0)1 489 3961-7

mail@szabo-scandic.com

www.szabo-scandic.com

[linkedin.com/company/szaboscandic](https://www.linkedin.com/company/szaboscandic) 

Data Sheet

L3MBTL2

Human, recombinant, N-terminal His-tag

Catalog #: 55018

Lot #: 131008-D Conc.: 0.60 mg/ml

Formulated in: 40 mM Tris-HCl, pH 8.0,
110 mM NaCl, 2.2 mM KCl, 0.04% Tween-
20, and 20% glycerol.

Stability: >6 months at -70°C . Avoid
freeze/thaw cycles.

References:

1. Guo, Y., *et al.*, *Nucleic Acids Res.* 2009 Apr;**37(7)**:2204-10.
2. Trojer, P., *et al.*, *Mol Cell.* 2001 May 20;**42(4)**:438-50.

Description:

Human lethal(3) malignant brain tumor-like protein 2 (L3MBTL2), GenBank Accession No. NM_031488, a.a. 178-625 with N-terminal His-tag, MW = 52.2 kDa, expressed in an *E. coli* cell expression system.

Application:

Useful for the study of Polycomb group (PcG) proteins, protein binding studies, screening inhibitors, and selectivity profiling.

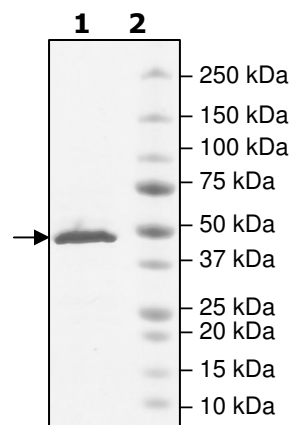
Quality Assurance

4-20% SDS-PAGE Coomassie staining

Lane 1:
2 μg L3MBTL2

Lane 2:
Protein Marker

Purity: $\geq 90\%$
MW: 52.2 kDa



OUR PRODUCTS ARE FOR RESEARCH USE ONLY. NOT FOR DIAGNOSTIC OR THERAPEUTIC USE.

To place your order, please contact us by Phone **1.858.829.3082** Fax **1.858.481.8694**

Or you can Email us at: info@bpsbioscience.com

Please visit our website at: www.bpsbioscience.com



6044 Cornerstone Court West, Suite E
San Diego, CA 92121
Tel: 1.858.829.3082
Fax: 1.858.481.8694
Email: info@bpsbioscience.com

Sequence:

MHHHHHHGFDWGKFLKDHSYKAAPVSCFKHVPLYDQWEDVMKGMKVEVLNSDAVL
PSRVYWIASVIQTAGYRVLLRYEGFENDASHDFWCNLGTVDVHPIGWCAINSKILVPP
RTIHAKFTDWKGYLMKRLVGSRTL PVDFHIKMVESMKYPFRQGMRLVVDKSQVSRT
RMAVVDTVIGGRLRLLYEDGSDDDFWCHMWSPLIHPVGWSRRVGHGIKMSERRSD
MAHHPTFRKIYCDAPYLFKKVRAVYTEGGWFEEGMKLEAIDPLNLGNICVATVCKVL
LDGYLMICVDGGPSTDGLDWFCYHASSHAIFPATFCQKNDIELTPPKGYEAQTFNWE
NYLEKTKSKAAPSRLFNMDCPNHGFKVGMKLEAVDLMEPRLICVATVKRVVHRLLSI
HFDGWDSEYDQWVDCESPDIYPVGWCELTGYQLQPPVAAEPATPLKAKEATK KKKK
Q

OUR PRODUCTS ARE FOR RESEARCH USE ONLY. NOT FOR DIAGNOSTIC OR THERAPEUTIC USE.

To place your order, please contact us by Phone **1.858.829.3082** Fax **1.858.481.8694**
Or you can Email us at: info@bpsbioscience.com
Please visit our website at: www.bpsbioscience.com