



SZABO SCANDIC

Part of Europa Biosite

Produktinformation



Forschungsprodukte & Biochemikalien



Zellkultur & Verbrauchsmaterial



Diagnostik & molekulare Diagnostik



Laborgeräte & Service

Weitere Information auf den folgenden Seiten!
See the following pages for more information!



Lieferung & Zahlungsart

siehe unsere [Liefer- und Versandbedingungen](#)

Zuschläge

- Mindermengenzuschlag
- Trockeneiszuschlag
- Gefahrgutzuschlag
- Expressversand

SZABO-SCANDIC HandelsgmbH

Quellenstraße 110, A-1100 Wien

T. +43(0)1 489 3961-0

F. +43(0)1 489 3961-7

mail@szabo-scandic.com

www.szabo-scandic.com

[linkedin.com/company/szaboscandic](https://www.linkedin.com/company/szaboscandic) 

Data Sheet

PDE1B, Rat

Rat, recombinant, N-terminal His-GST tag

Catalog #: 60009

Lot #: 121026-GN **Conc.:** 0.32 mg/ml

Formulated in: 40 mM Tris-HCl, pH 8.0, 110 mM NaCl, 2.2 mM KCl, 200 mM Imidazole, 3mM DTT, 20% Glycerol.

Stability: >6 months at -80°C . *Avoid freeze/thaw cycles. Storing diluted enzyme is not recommended, if necessary, use carrier protein (BSA 0.1 – 0.5%).*

References:

1. Bender A.T. and Beavo J.A. *Proc. Natl. Acad. Sci. U.S.A.* **103 (2)**, 460-465 (2006).
2. Bender A.T. *et al.*, *Proc. Natl. Acad. Sci. U.S.A.* **102 (2)**, 497-502 (2005).

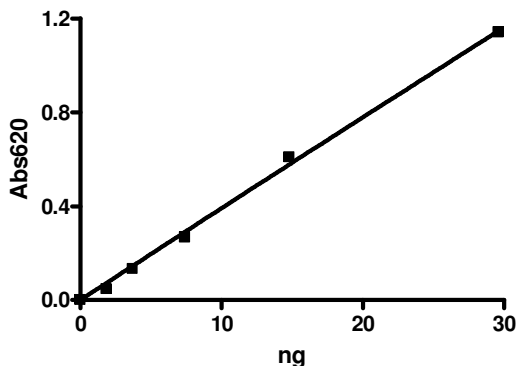
Description: Rat PDE1B (GenBank Accession No. NM_022710), full length with N-terminal HIS-GST tag, MW= 89 kDa, expressed in a Baculovirus infected Sf9 cell expression system.

Specific Activity: 6,800 pmol/min/ μg .
 One unit is defined as the amount of enzyme that will convert 1 pmole of 3', 5'-cAMP to 5'-AMP per min at 37°C . Assay conditions: 10 mM Tris-HCl, pH 7.4, 10 mM MgCl_2 , 0.1 mg/ml BSA, 0.05% Tween-20, 200 μM cAMP, and serial dilutions of PDE at 37°C for 20 min. Quantified by 5'-nucleotidase cleaving the 5'-AMP product, releasing the phosphate group which is detected by Malachite Green Reagent.

Application: Useful for the study of enzyme kinetics, screening inhibitors, and selectivity profiling.

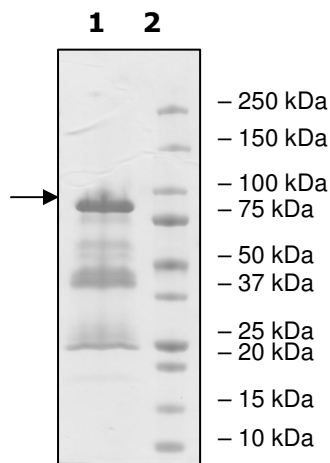
Quality Assurance

PDE1B Specific Activity



**10% SDS-PAGE
Coomassie staining**

Lane 1:
2.7 μg PDE1B
Lane 2:
Protein Marker
MW: 87 kDa
Purity: $\geq 35\%$



OUR PRODUCTS ARE FOR RESEARCH USE ONLY. NOT FOR DIAGNOSTIC OR THERAPEUTIC USE.

To place your order, please contact us by Phone **1.858.829.3082** Fax **1.858.481.8694**
 Or you can Email us at: info@bpsbioscience.com
 Please visit our website at: www.bpsbioscience.com