



SZABO SCANDIC

Part of Europa Biosite

Produktinformation



Forschungsprodukte & Biochemikalien



Zellkultur & Verbrauchsmaterial



Diagnostik & molekulare Diagnostik



Laborgeräte & Service

Weitere Information auf den folgenden Seiten!
See the following pages for more information!



Lieferung & Zahlungsart

siehe unsere [Liefer- und Versandbedingungen](#)

Zuschläge

- Mindermengenzuschlag
- Trockeneiszuschlag
- Gefahrgutzuschlag
- Expressversand

SZABO-SCANDIC HandelsgmbH

Quellenstraße 110, A-1100 Wien

T. +43(0)1 489 3961-0

F. +43(0)1 489 3961-7

mail@szabo-scandic.com

www.szabo-scandic.com

[linkedin.com/company/szaboscandic](https://www.linkedin.com/company/szaboscandic) 

Data Sheet

PDE2A V2 (Mouse), GST-tag

Mouse, Recombinant, N-terminal GST-tag

Catalog #: 60018

Lot #: 140305-2 **Conc.:** 0.12 mg/ml

Formulated in: 40 mM Tris-HCl, pH 8.0, 110 mM NaCl, 2.2 mM KCl, 0.04% Tween-20, 1.6 mM glutathione, 20% glycerol

Stability: At least 6 months at -80°C . Avoid freeze/thaw cycles. Storing diluted enzyme is not recommended, if necessary, use carrier protein (BSA 0.1 – 0.5%).

References:

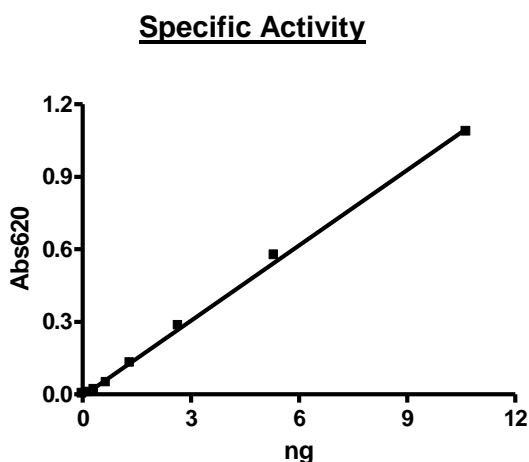
1. Sadhu, K., *et al.*, *J. Histochem. Cytochem.* **47(7)**, 889-894 (1999).
2. Iffland, A., *et al.*, *Biochemistry* **44 (23)**, 8312-8325 (2005).

Description: Murine PDE2A, variant 2 (GenBank Accession No. NM_001008548), a.a 2-935, with N-terminal GST tag, MW=132 kDa, expressed in a Baculovirus infected Sf9 cell expression system.

Specific Activity: $\geq 20,000$ pmole/min/ μg . One unit is defined as the amount of enzyme that will convert 1 pmole of 3', 5'-cAMP to 5'-AMP per min at 37°C . Assay condition: 10 mM Tris-HCl, pH 7.4, 10 mM MgCl_2 , 0.1 mg/ml BSA, 0.05% Tween-20, 200 μM cAMP, and serial dilutions of PDE2A at 37°C for 20 min. Quantified by 5' nucleotidase cleaving the 5'-AMP product and releasing the phosphate group which is detected by Malachite Green Reagent.

Application: Useful for the study of enzyme kinetics, screening inhibitors, and selectivity profiling.

Quality Assurance



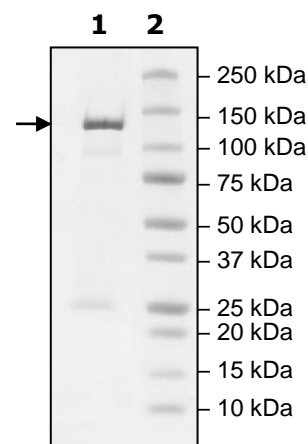
4-20% SDS-PAGE
Coomassie staining

Lane 1:
 PDE2A, v2 (1.5 μg)

Lane 2:
 Protein Marker

Purity: $\geq 88\%$

MW: 132 kDa



OUR PRODUCTS ARE FOR RESEARCH USE ONLY. NOT FOR DIAGNOSTIC OR THERAPEUTIC USE.

To place your order, please contact us by Phone **1.858.829.3082** Fax **1.858.481.8694**

Or you can Email us at: info@bpsbioscience.com

Please visit our website at: www.bpsbioscience.com