



# SZABO SCANDIC

Part of Europa Biosite

## Produktinformation



Forschungsprodukte & Biochemikalien



Zellkultur & Verbrauchsmaterial



Diagnostik & molekulare Diagnostik



Laborgeräte & Service

Weitere Information auf den folgenden Seiten!  
See the following pages for more information!



### Lieferung & Zahlungsart

siehe unsere [Liefer- und Versandbedingungen](#)

### Zuschläge

- Mindermengenzuschlag
- Trockeneiszuschlag
- Gefahrgutzuschlag
- Expressversand

### SZABO-SCANDIC HandelsgmbH

Quellenstraße 110, A-1100 Wien

T. +43(0)1 489 3961-0

F. +43(0)1 489 3961-7

[mail@szabo-scandic.com](mailto:mail@szabo-scandic.com)

[www.szabo-scandic.com](http://www.szabo-scandic.com)

[linkedin.com/company/szaboscandic](https://www.linkedin.com/company/szaboscandic) 

## Data Sheet

### PDE4A10

Human, recombinant, N-terminal GST tag  
**Catalog #:** 60038  
**Lot#:** 120207-GC      **Conc.:** 0.26 mg/ml

**Formulated in:** 50 mM Tris-HCl, pH 8.0, 300 Glycerol, and 3mM DTT.

**Stability:** >6 months at -80°C

**References:**

1. McCahill, A., et al. *Cell Signal.* 2008. Nov; **20(11)**:2071-83.
2. McPhee, I., et al., *Cell Signal.* 2001. Dec; **13(12)**:911-8.

**Description:** Human PDE4A10, also known as PDE4A protein isoform 6, transcript variant 3 (GenBank Accession No. NM\_001111309), amino acids 2-825(end) with N-terminal GST tag, MW= 117 kDa, expressed in a Baculovirus infected Sf9 cell expression system.

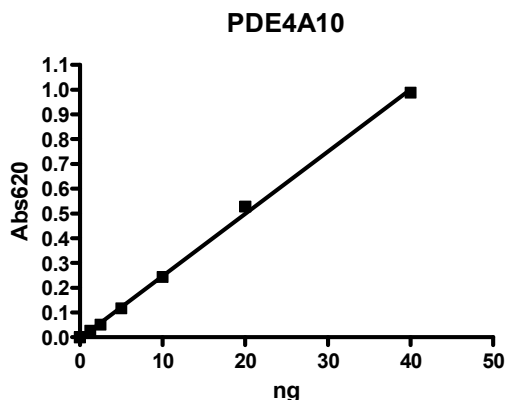
**Specific Activity:** 4362 pmole/min/mg.

One unit is defined as the amount of enzyme that will convert 1 pmole of 3', 5'-cAMP to 5'-AMP per min at 37°C. Assay condition: 10 mM Tris-HCl, pH 7.4, 10 mM MgCl<sub>2</sub>, 1 mM MnCl<sub>2</sub>, 200 μM cAMP, and 0.2 ng/μl PDE4A10 at 37°C for 20 min. Quantified by 5'-nucleotidase cleaving the 5'-AMP product and releasing the phosphate group which is detected by Malachite Green Reagent.

**Application:**

Useful for the study of enzyme kinetics, screening inhibitors, and selectivity profiling.

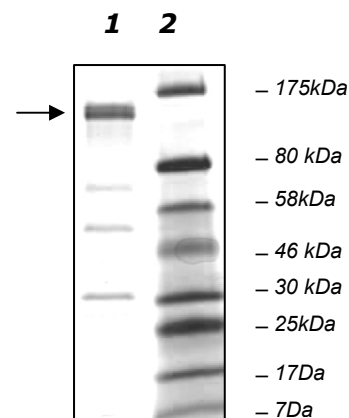
## Quality Assurance



**10% SDS-PAGE  
 Coomassie staining**

**Lane 1:**  
 1 μg PDE4A10  
**Lane 2:**  
 Protein Marker  
 BioLabs (#P7708L)

**MW:** 117 kDa  
**Purity:** ≥75%



OUR PRODUCTS ARE FOR RESEARCH USE ONLY. NOT FOR DIAGNOSTIC OR THERAPEUTIC USE.

To place your order, please contact us by Phone 1.858.829.3082 Fax 1.858.481.8694  
 Or you can Email us at: [info@bpsbioscience.com](mailto:info@bpsbioscience.com)  
 Please visit our website at: [www.bpsbioscience.com](http://www.bpsbioscience.com)