



# SZABO SCANDIC

Part of Europa Biosite

## Produktinformation



Forschungsprodukte & Biochemikalien



Zellkultur & Verbrauchsmaterial



Diagnostik & molekulare Diagnostik



Laborgeräte & Service

Weitere Information auf den folgenden Seiten!  
See the following pages for more information!



### Lieferung & Zahlungsart

siehe unsere [Liefer- und Versandbedingungen](#)

### Zuschläge

- Mindermengenzuschlag
- Trockeneiszuschlag
- Gefahrgutzuschlag
- Expressversand

### SZABO-SCANDIC HandelsgmbH

Quellenstraße 110, A-1100 Wien

T. +43(0)1 489 3961-0

F. +43(0)1 489 3961-7

[mail@szabo-scandic.com](mailto:mail@szabo-scandic.com)

[www.szabo-scandic.com](http://www.szabo-scandic.com)

[linkedin.com/company/szaboscandic](https://www.linkedin.com/company/szaboscandic) 

## Data Sheet

### PDE4A4B

Human, recombinant, N-terminal GST tag

Catalog #: 60039

Lot#: 120206-GC                      Conc.: 0.16mg/ml

**Formulated in:** 50 mM Tris-HCl, pH 8.0, 300 Glycerol, and 3 mM DTT.

**Stability:** >6 months at -80°C

**References:**

1. Sullivan, M., et al., *Biochem. J.* **333**: 693-703 (1998).
2. Huston E, et al., *J Cell Sci.* **119**:3799-810. (2006).

**Description:**

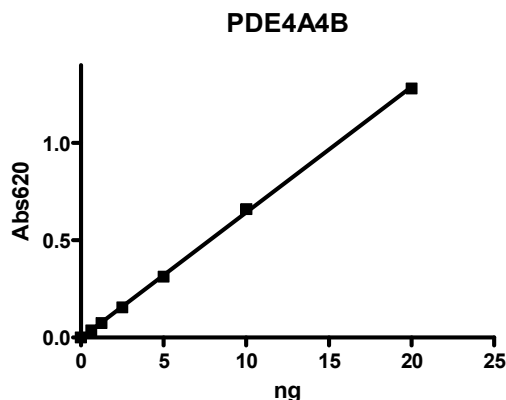
Human PDE4A4B, also known as PDE4A isoform 1 (GenBank Accession No. NM\_001111307), amino acids (2-end) with N-terminal GST tag, MW= 124 kDa, expressed in a Baculovirus infected Sf9 cell expression system.

**Specific Activity:** 11,708 pmol/min/μg. One unit is defined as the amount of enzyme that will convert 1 pmole of 3', 5'-cAMP to 5'-AMP per min at 37°C. Assay conditions: 10 mM Tris-HCl, pH 7.4, 10 mM MgCl<sub>2</sub>, 0.05% Tween-20, 200 μM cAMP, and PDE4A4B at 37°C for 20 min. Quantified by 5'-nucleotidase cleaving the 5'-AMP product and releasing the phosphate group which is detected by Malachite Green Reagent.

**Application:**

Useful for the study of enzyme kinetics, screening inhibitors, and selectivity profiling.

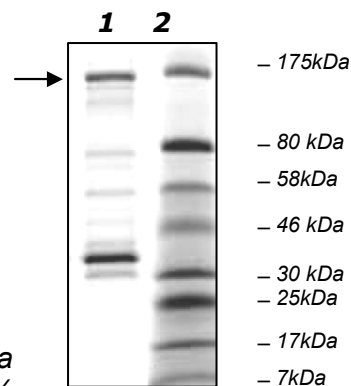
### Quality Assurance



**10% SDS-PAGE  
 Coomassie staining**

**Lane 1:**  
 0.5 μg PDE4A4B  
**Lane 2:**  
 Protein Marker  
 BioLabs (#P7708L)

**MW:** 100 kDa  
**Purity:** ≥40%



OUR PRODUCTS ARE FOR RESEARCH USE ONLY. NOT FOR DIAGNOSTIC OR THERAPEUTIC USE.

To place your order, please contact us by Phone 1.858.829.3082 Fax 1.858.481.8694  
 Or you can Email us at: [info@bpsbioscience.com](mailto:info@bpsbioscience.com)  
 Please visit our website at: [www.bpsbioscience.com](http://www.bpsbioscience.com)



6044 Cornerstone Court West, Suite E  
San Diego, CA 92121  
Tel: 1.858.829.3082  
Fax: 1.858.481.8694  
Email: [info@bpsbioscience.com](mailto:info@bpsbioscience.com)

*OUR PRODUCTS ARE FOR RESEARCH USE ONLY. NOT FOR DIAGNOSTIC OR THERAPEUTIC USE.*

*To place your order, please contact us by Phone **1.858.829.3082** Fax **1.858.481.8694**  
Or you can Email us at: [info@bpsbioscience.com](mailto:info@bpsbioscience.com)  
Please visit our website at: [www.bpsbioscience.com](http://www.bpsbioscience.com)*