



# SZABO SCANDIC

Part of Europa Biosite

## Produktinformation



Forschungsprodukte & Biochemikalien



Zellkultur & Verbrauchsmaterial



Diagnostik & molekulare Diagnostik



Laborgeräte & Service

Weitere Information auf den folgenden Seiten!  
See the following pages for more information!



### Lieferung & Zahlungsart

siehe unsere [Liefer- und Versandbedingungen](#)

### Zuschläge

- Mindermengenzuschlag
- Trockeneiszuschlag
- Gefahrgutzuschlag
- Expressversand

### SZABO-SCANDIC HandelsgmbH

Quellenstraße 110, A-1100 Wien

T. +43(0)1 489 3961-0

F. +43(0)1 489 3961-7

[mail@szabo-scandic.com](mailto:mail@szabo-scandic.com)

[www.szabo-scandic.com](http://www.szabo-scandic.com)

[linkedin.com/company/szaboscandic](https://www.linkedin.com/company/szaboscandic) 

## Data Sheet

### PDE4B1

Human, recombinant, N-terminal GST tag  
**Catalog #:** 60041  
**Lot#:** 90520                      **Conc.:** 1.4 mg/ml

**Formulated in:** 45 mM Tris-HCl, pH 8.0,  
 124mM NaCl, 2.4 mM KCl, 18 mM  
 glutathione, 3 mM DTT and 10% glycerol

**Stability:** >6 months at -80°C

**References:**

1. . Shah, V.O., *et al.*, *Am. J. Kidney Dis.* **48** (4), 616-628 (2006)
2. Smith, P.G., *et al.*, *Blood* **105** (1), 308-316 (2005).

**Description:**

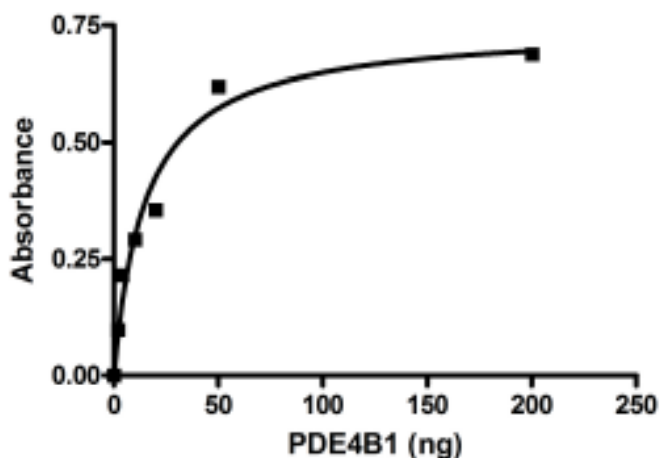
Human PDE4B1 (GenBank Accession No. NM\_001037341), full length with N-terminal GST tag, MW = 109 kDa, expressed in a baculovirus-infected Sf9 cell expression system.

**Specific Activity:** 8532 pmol/min/μg

**Assay Conditions:** 10 mM Tris-HCl, pH 7.4, 10 mM MgCl<sub>2</sub>, 200 μM 3', 5'-cAMP substrate, and 0.2 ng/μl PDE4B1 at 37°C for 20 min. Quantified by 5' nucleotidase cleavage of the 5' AMP product and release of the phosphate group which is detected by Malachite Green Reagent. One unit is defined as the amount of enzyme that will convert 1 pmole of 3', 5'-cAMP to 5' AMP per min at 37°C.

**Application:** Useful for the study of enzyme kinetics, screening inhibitors, and selectivity profiling.

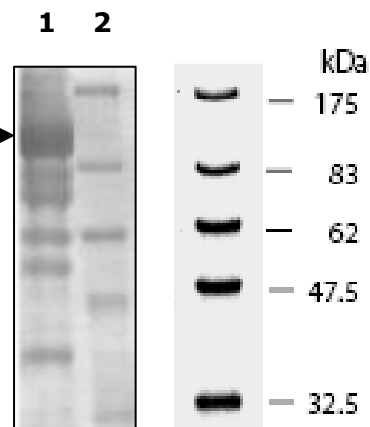
### Quality Assurance



**10% SDS-PAGE  
 Coomassie staining**

**Lane 1:**  
 7ug PDE4B1  
**Lane 2:**  
 Protein Marker  
 BioLabs (#P7708L)

**MW:** 109 kDa  
**Purity:** ≥70%



OUR PRODUCTS ARE FOR RESEARCH USE ONLY. NOT FOR DIAGNOSTIC OR THERAPEUT

To place your order, please contact us by Phone **1.858.829.3082** Fax **1.858.481.8694**  
 Or you can Email us at: [info@bpsbioscience.com](mailto:info@bpsbioscience.com)  
 Please visit our website at: [www.bpsbioscience.com](http://www.bpsbioscience.com)



6044 Cornerstone Court West, Suite E  
San Diego, CA 92121  
**Tel:** 1.858.829.3082  
**Fax:** 1.858.481.8694  
**Email:** [info@bpsbioscience.com](mailto:info@bpsbioscience.com)

OUR PRODUCTS ARE FOR RESEARCH USE ONLY. NOT FOR DIAGNOSTIC OR THERAPEUTIC USE.

To place your order, please contact us by Phone **1.858.829.3082** Fax **1.858.481.8694**  
Or you can Email us at: [info@bpsbioscience.com](mailto:info@bpsbioscience.com)  
Please visit our website at: [www.bpsbioscience.com](http://www.bpsbioscience.com)