



SZABO SCANDIC

Part of Europa Biosite

Produktinformation



Forschungsprodukte & Biochemikalien



Zellkultur & Verbrauchsmaterial



Diagnostik & molekulare Diagnostik



Laborgeräte & Service

Weitere Information auf den folgenden Seiten!
See the following pages for more information!



Lieferung & Zahlungsart

siehe unsere [Liefer- und Versandbedingungen](#)

Zuschläge

- Mindermengenzuschlag
- Trockeneiszuschlag
- Gefahrgutzuschlag
- Expressversand

SZABO-SCANDIC HandelsgmbH

Quellenstraße 110, A-1100 Wien

T. +43(0)1 489 3961-0

F. +43(0)1 489 3961-7

mail@szabo-scandic.com

www.szabo-scandic.com

[linkedin.com/company/szaboscandic](https://www.linkedin.com/company/szaboscandic) 

Data Sheet

PDE4C1, GST-tag

Human, recombinant, N-terminal GST tag

Catalog #: 60044

Lot #: 150923 **Conc.:** 0.55 mg/ml

Formulated in: 40 mM Tris-HCl, pH 8.0, 110 mM NaCl, 2.2 mM KCl, 3 mM DTT, 20% glycerol and 9 mM glutathione

Stability: At least 6 months at -80°C . *Avoid freeze/thaw cycles. Storing diluted enzyme is not recommended, if necessary, use carrier protein (BSA 0.1 – 0.5%).*

References:

1. Wang H. *et al.*, *Biochem J.* 2007; **408(2)**:193-201.
2. Sullivan M., *et al.*, *Cell. Signal.* 1999; **11(10)**:735-742.

Description:

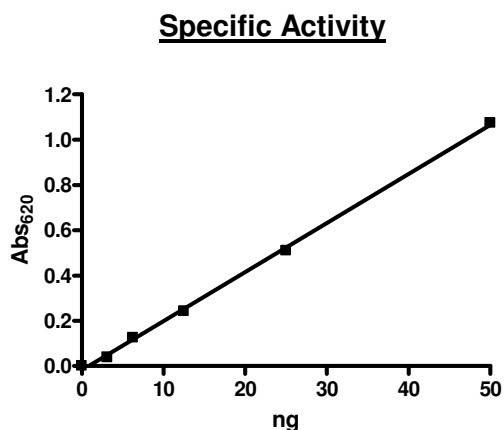
Human PDE4C1 (GenBank Accession No. NM_000923), full length, with N-terminal GST tag, MW=106 kDa, expressed in a baculovirus-infected Sf9 cell expression system.

Specific Activity: $\geq 3,000$ pmole/min/ μg . One unit is defined as the amount of enzyme that will convert 1 pmole of 3', 5'-cAMP to 5'-AMP per min at 37°C . Assay condition: 10 mM Tris-HCl, pH 7.4, 10 mM MgCl_2 , 1 mM MnCl_2 , 200 μM cAMP, 2.5 kU 5'-nucleotidase and PDE4C1 at 37°C for 20 min. Quantified by 5'-nucleotidase cleaving the 5'-AMP product and releasing the phosphate group which is detected by Malachite Green Reagent.

Application:

Useful for the study of enzyme kinetics, screening inhibitors, and selectivity profiling.

Quality Assurance



**4-20% SDS-PAGE
Coomassie staining**

Lane 1:

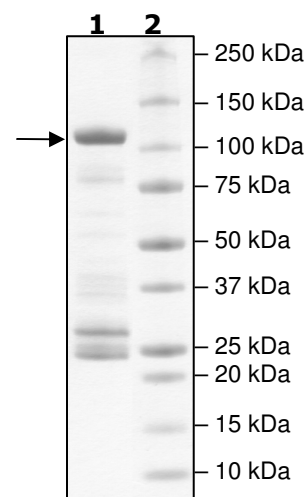
2 μg PDE4C1

Lane 2:

Protein Marker

MW: 106 kDa

Purity: $\geq 41\%$



OUR PRODUCTS ARE FOR RESEARCH USE ONLY. NOT FOR DIAGNOSTIC OR THERAPEUTIC USE.

To place your order, please contact us by Phone **1.858.829.3082** Fax **1.858.481.8694**

Or you can Email us at: info@bpsbioscience.com

Please visit our website at: www.bpsbioscience.com