



# SZABO SCANDIC

Part of Europa Biosite

## Produktinformation



Forschungsprodukte & Biochemikalien



Zellkultur & Verbrauchsmaterial



Diagnostik & molekulare Diagnostik



Laborgeräte & Service

Weitere Information auf den folgenden Seiten!  
See the following pages for more information!



### Lieferung & Zahlungsart

siehe unsere [Liefer- und Versandbedingungen](#)

### Zuschläge

- Mindermengenzuschlag
- Trockeneiszuschlag
- Gefahrgutzuschlag
- Expressversand

### SZABO-SCANDIC HandelsgmbH

Quellenstraße 110, A-1100 Wien

T. +43(0)1 489 3961-0

F. +43(0)1 489 3961-7

[mail@szabo-scandic.com](mailto:mail@szabo-scandic.com)

[www.szabo-scandic.com](http://www.szabo-scandic.com)

[linkedin.com/company/szaboscandic](https://www.linkedin.com/company/szaboscandic) 

## Data Sheet

### PDE4D7, GST-Tag

Human, Recombinant, N-terminal GST-tag

**Catalog #:** 60047

**Lot#:** 171120-A      **Conc.:** 0.39 mg/ml

**Formulated in:** 45 mM Tris-HCl, pH 8.0, 124 mM NaCl, 2.4 mM KCl, 3 mM DTT, 20 mM glutathione and 10% glycerol.

**Stability:** At least 6 months at  $-80^{\circ}\text{C}$ . Avoid freeze/thaw cycles. Protein may be diluted to  $\geq 100$   $\mu\text{g/ml}$  in PBS + glycerol and stored at  $-80^{\circ}\text{C}$ .

**References:**

1. Wang, D., *et al.*, (2003). *Cell Signal.* **15(9)**:883-91.
2. Houslay, M.D. (2005). *Mol Pharmacol.* (2005). **68(3)**:563-7

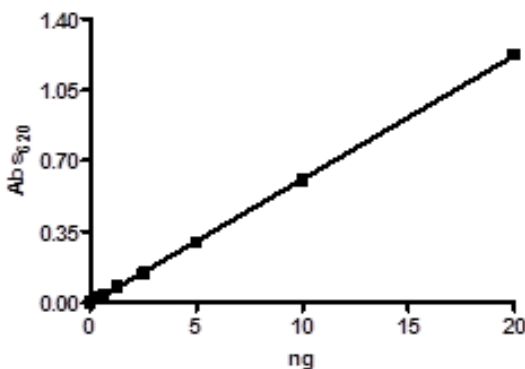
**Description:** Human PDE4D7 (GenBank Accession No. NM\_001165899), a.a. 2-748(end) with N-terminal GST-tag, MW=111 kDa, expressed in a Baculovirus infected Sf9 cell expression system.

**Specific Activity:** 10,000 pmole/min/ $\mu\text{g}$ . Assay Conditions: One unit is defined as the amount of enzyme that will convert 1 pmole of 3', 5'-cAMP to 5'-AMP per min at  $37^{\circ}\text{C}$ . Assay condition: 10 mM Tris-HCl, pH 7.4, 10 mM MgCl<sub>2</sub>, 0.1 mg/ml BSA, 0.05% Tween-20, 200  $\mu\text{M}$  cAMP, and serial dilutions of PDE-4D7 at  $37^{\circ}\text{C}$  for 20 min. Quantified by 5' nucleotidase cleaving the 5'-AMP product and releasing the phosphate group which is detected by Malachite Green Reagent.

**Application:** Useful for the study of enzyme kinetics, screening inhibitors, and selectivity profiling.

### Quality Assurance

**Specific Activity**



**4-20% SDS-PAGE**  
**Coomassie staining**

**Lane 1:**

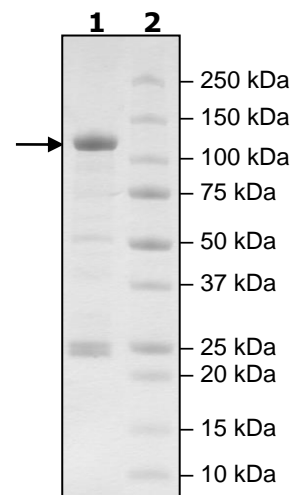
2  $\mu\text{g}$  PDE4D7

**Lane 2:**

Protein Marker

**MW:** 111 kDa

**Purity:**  $\geq 57\%$



OUR PRODUCTS ARE FOR RESEARCH USE ONLY. NOT FOR DIAGNOSTIC OR THERAPEUTIC USE.

To place your order, please contact us by Phone **1.858.829.3082** Fax **1.858.481.8694**

Or you can Email us at: [info@bpsbioscience.com](mailto:info@bpsbioscience.com)

Please visit our website at: [www.bpsbioscience.com](http://www.bpsbioscience.com)