



SZABO SCANDIC

Part of Europa Biosite

Produktinformation



Forschungsprodukte & Biochemikalien



Zellkultur & Verbrauchsmaterial



Diagnostik & molekulare Diagnostik



Laborgeräte & Service

Weitere Information auf den folgenden Seiten!
See the following pages for more information!



Lieferung & Zahlungsart

siehe unsere [Liefer- und Versandbedingungen](#)

Zuschläge

- Mindermengenzuschlag
- Trockeneiszuschlag
- Gefahrgutzuschlag
- Expressversand

SZABO-SCANDIC HandelsgmbH

Quellenstraße 110, A-1100 Wien

T. +43(0)1 489 3961-0

F. +43(0)1 489 3961-7

mail@szabo-scandic.com

www.szabo-scandic.com

[linkedin.com/company/szaboscandic](https://www.linkedin.com/company/szaboscandic)

Data Sheet

PDE4D2, GST-Taq

Human, Recombinant, N-terminal GST tag
Catalog #: 60048
Lot#: 170113-G1 **Conc.:** 0.27 mg/ml

Formulated in: 40 mM Tris-HCl, pH 8.0,
 110 mM NaCl, 2.2 mM KCl, 3 mM DTT,
 20% Glycerol and 16 mM Glutathione.

Stability: At least 6 months at -80°C . Avoid
 freeze/thaw cycles. Protein may be diluted
 to $\geq 100 \mu\text{g/ml}$ in PBS + glycerol and stored
 at -80°C .

References:

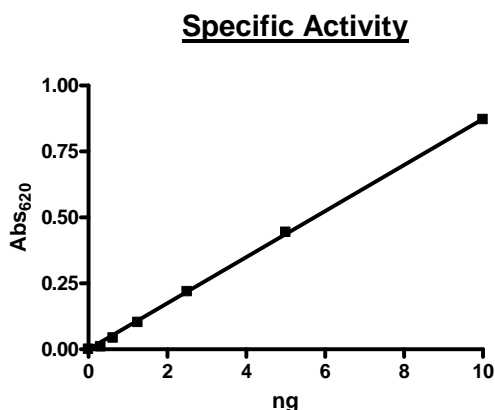
1. Fidani, L., et al., *Eur. J. Neurol.* **14** (7), 745-749 (2007).
2. Baillie, G.S., et al., *Biochem. J.* **404** (1), 71-80 (2007).

Description: Human PDE4D2 (GenBank Accession No. NP_001184150), a.a. 2-507(end) with N-terminal GST tag, MW=84 kDa, expressed in a Baculovirus infected Sf9 cell expression system.

Specific Activity: $\geq 13,600 \text{ pmol/min}/\mu\text{g}$.
 One unit is defined as the amount of enzyme that will convert 1 pmole of 3', 5'-cAMP to 5'-AMP per min at 37°C . Assay condition: 10 mM Tris-HCl, pH 7.4, 10 mM MgCl₂, 0.1 mg/ml BSA, 0.05% Tween-20, 200 μM cAMP, and serial dilutions of PDE4D2 at 37°C for 20 min. Quantified by 5' nucleotidase cleaving the 5'-AMP product and releasing the phosphate group which is detected by Malachite Green Reagent.

Application: Useful for the study of enzyme kinetics, screening inhibitors, and selectivity profiling.

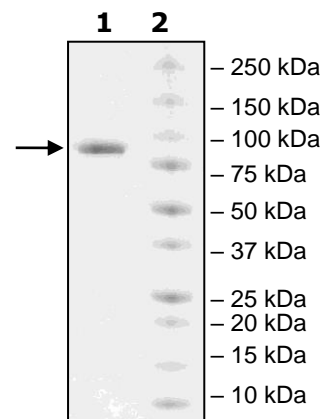
Quality Assurance



4-20% SDS-PAGE
Coomassie staining

Lane 1:
 2 μg PDE4D2
Lane 2:
 Protein Marker

MW: 84 kDa
Purity: $\geq 86\%$



OUR PRODUCTS ARE FOR RESEARCH USE ONLY. NOT FOR DIAGNOSTIC OR THERAPEUTIC USE.

To place your order, please contact us by Phone **1.858.829.3082** Fax **1.858.481.8694**
 Or you can Email us at: info@bpsbioscience.com
 Please visit our website at: www.bpsbioscience.com