



SZABO SCANDIC

Part of Europa Biosite

Produktinformation



Forschungsprodukte & Biochemikalien



Zellkultur & Verbrauchsmaterial



Diagnostik & molekulare Diagnostik



Laborgeräte & Service

Weitere Information auf den folgenden Seiten!
See the following pages for more information!



Lieferung & Zahlungsart

siehe unsere [Liefer- und Versandbedingungen](#)

Zuschläge

- Mindermengenzuschlag
- Trockeneiszuschlag
- Gefahrgutzuschlag
- Expressversand

SZABO-SCANDIC HandelsgmbH

Quellenstraße 110, A-1100 Wien

T. +43(0)1 489 3961-0

F. +43(0)1 489 3961-7

mail@szabo-scandic.com

www.szabo-scandic.com

[linkedin.com/company/szaboscandic](https://www.linkedin.com/company/szaboscandic) 

Data Sheet

PDE4B

Rat, recombinant, N-terminal GST-tag
Catalog #: 60049
Lot#: 121220-G **Conc.:** 0.39 mg/ml

Formulated in: 40 mM Tris-HCl, pH 8.0,
 110 mM NaCl, 2.2 mM KCl, 0.04% Tween-
 20, and 20% glycerol.

Stability: >6 months at -70°C. Avoid
 freeze/thaw cycles.

References:

1. Girgenti, M.J., *et al.*, *PLoS One* 2012;**7(2)**:e32404.
2. Zhao, H., *et al.*, *Eur. J. Pharmacol.* 2008 Aug 20;**590(1-3)**:29-35.

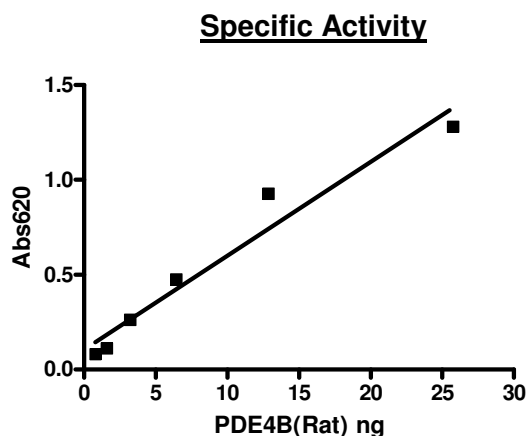
Description: Rat phosphodiesterase 4B (PDE4B) (GenBank Accession No. NM_017031), a.a. 2-722 (end) with N-terminal GST-tag, MW=108.3 kDa, expressed in a Baculovirus infected Sf9 cell expression system.

Specific Activity: 15,345 pmole/min/μg.

Assay Description: One unit is defined as the amount of enzyme that will convert 1 pmole of 3', 5'-cAMP to 5'-AMP per min at 37°C. Assay conditions: 10 mM Tris-HCl, pH 7.4, 10 mM MgCl₂, 0.1 mg/ml BSA, 0.05% Tween-20, 200 μM cAMP, and serial dilutions of rPDE4B at 37°C for 20 min. Quantified by 5' nucleotidase cleaving the 5'-AMP product and releasing the phosphate group which is detected by Malachite Green Reagent.

Application: Useful for the study of enzyme kinetics, screening inhibitors, and selectivity profiling.

Quality Assurance

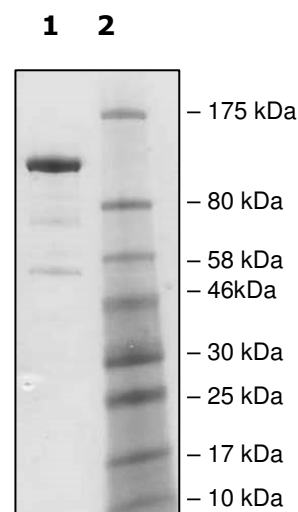


4-20% SDS-PAGE Coomassie staining

Lane 1:
2 μg rat PDE4B →

Lane 2:
Protein Markers

MW: 108.3 kDa
Purity: ≥70%



OUR PRODUCTS ARE FOR RESEARCH USE ONLY. NOT FOR DIAGNOSTIC OR THERAPEUTIC USE.

To place your order, please contact us by Phone **1.858.829.3082** Fax **1.858.481.8694**
 Or you can Email us at: info@bpsbioscience.com
 Please visit our website at: www.bpsbioscience.com



6044 Cornerstone Court West, Suite E
San Diego, CA 92121
Tel: 1.858.829.3082
Fax: 1.858.481.8694
Email: info@bpsbioscience.com

Sequence:

MSPILGYWKIKGLVQPTRLLLEYLEEKYEEHLYERDEGDKWRNKKFELGLEFPNLPYYI
DGDVKLTQSMIIRYIADKHNMLGGCPKERAIEISMLEGAVLDIRYGVSRAYSKDFETLK
VDFLSKLPPEMLKMFEDRLCHKTYLNGDHVTHPDFMLYDALDVVLYMDPMCLDAFPKLV
CFKKRIEAIQIDKYLKSSKYIAWPLQGQWQATFGGGDHPPKSDPLVPRGSPGEFTAKN
SSKELPASESEVCIKTFKEQMRLELELPKLPGNRPTSPKISPRSSPRNSPCFFRKLKLVN
KSIRQRRRFTVAHTCFDVENGPSGRSPLDPQASSSSGLVLHAAFPGHSQRRESFLY
RSDSDYDLSPKAMSRNSSLPSEQHGDDLIVTPFAQVLASLRVSRNFTLLTNLHGAP
NKRSPAASQAPVTRVSLQEESYQKLAMETLEELDWCLDQLETIQTYRSVSEMASNKF
KRMLNRELTHLSEMSRSGNQVSEYISNTFLDKQNDVEIPSPTQKDREKKKKQQLMTQ
ISGVKMLMHSSSLNNTSISRFGVNTENEDHLAKELEDLNKWGLNIFNVAGYSHNRPLT
CIMYAIFQERDLLKTFKISSDTFVTYMMTLEDHYHSDVAYHNSLHAADVAQSTHVLLST
PALDAVFTDLEILAAIFAAAIHDVDHPGVSNQFLINTNSELALMYNDESVLENHHLAVG
FKLLQEEHCDFQNLTKKQRQTLRKMVIDMVLATDMSKHMSLLADLKTMTVETKKVTS
SGVLLLDNYTDRIQVLRNMVHCADLSNPTKSLELYRQWTDRIEEMFFQQGDKERERG
MEISPMCDKHTASVEKSQVGFIDYIVHPLWETWADLVQPD AQDILD TLEDNRN WYQS
MIPQSPSPPLDERSRDCQGLMEKFQFELTLEEEDSEGPEKEGEGPNYFSSTKTLCKP
CHAANGLALPVGGGNAASTQPRCGHV

OUR PRODUCTS ARE FOR RESEARCH USE ONLY. NOT FOR DIAGNOSTIC OR THERAPEUTIC USE.

To place your order, please contact us by Phone **1.858.829.3082** Fax **1.858.481.8694**
Or you can Email us at: info@bpsbioscience.com
Please visit our website at: www.bpsbioscience.com