



SZABO SCANDIC

Part of Europa Biosite

Produktinformation



Forschungsprodukte & Biochemikalien



Zellkultur & Verbrauchsmaterial



Diagnostik & molekulare Diagnostik



Laborgeräte & Service

Weitere Information auf den folgenden Seiten!
See the following pages for more information!



Lieferung & Zahlungsart

siehe unsere [Liefer- und Versandbedingungen](#)

Zuschläge

- Mindermengenzuschlag
- Trockeneiszuschlag
- Gefahrgutzuschlag
- Expressversand

SZABO-SCANDIC HandelsgmbH

Quellenstraße 110, A-1100 Wien

T. +43(0)1 489 3961-0

F. +43(0)1 489 3961-7

mail@szabo-scandic.com

www.szabo-scandic.com

[linkedin.com/company/szaboscandic](https://www.linkedin.com/company/szaboscandic) 

Data Sheet

PDE5A, GST-Tag

Human, Recombinant, N-terminal GST-tag

Catalog #: 60050

Lot#: 181008-G **Conc.:** 0.36 mg/ml

Formulated in: 40 mM Tris-HCl, pH 8.0, 110 mM NaCl, 2.2 mM KCl, 3 mM DTT, 0.04% Tween-20, and 20% glycerol.

Stability: At least 6 months at -80°C . Avoid freeze/thaw cycles. Storing diluted enzyme is not recommended, if necessary, use carrier protein (BSA 0.1 – 0.5%).

References:

1. Filippi, S. *et al.*, *Endocrinology* **148** (3), 1019-1029 (2007).
2. Bruder, S. *et al.*, *J. Biol. Chem.* **281** (29), 19969-19976 (2006).

Description:

Human PDE5A (GenBank Accession No. NM_001083), full length, with N-terminal GST tag, MW=126 kDa, expressed in a baculovirus infected Sf9 cell expression system.

Specific Activity: 3,100 pmol/min/ μg

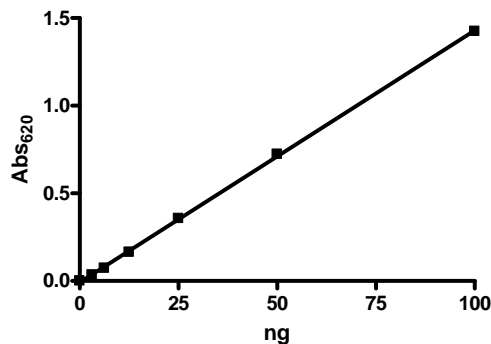
One unit is defined as the amount of enzyme that will convert 1 pmole of 3', 5'-cGMP to 5'-GMP per min at 37°C . Assay condition: 10 mM Tris-HCl, pH 7.4, 10 mM MgCl_2 , 0.1 mg/ml BSA, 0.05% Tween-20, 200 μM cGMP, and serial dilutions of PDE5A1 at 37°C for 20 min. Quantified by 5' nucleotidase cleaving the 5'-GMP product and releasing the phosphate group which is detected by Malachite Green Reagent.

Application:

Useful for the study of enzyme kinetics, screening inhibitors, and selectivity profiling.

Quality Assurance

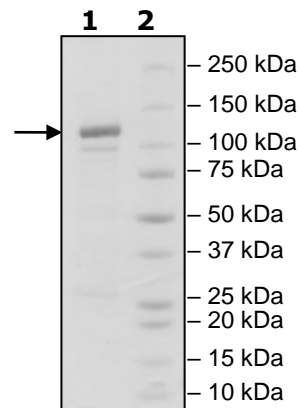
Specific Activity



4-20% SDS-PAGE
Coomassie staining

Lane 1:
3 μg PDE5A1
Lane 2:
Protein Marker

MW: 126 kDa
Purity: $\geq 75\%$



OUR PRODUCTS ARE FOR RESEARCH USE ONLY. NOT FOR DIAGNOSTIC OR THERAPEUTIC USE.

To place your order, please contact us by Phone **1.858.829.3082** Fax **1.858.481.8694**
 Or you can Email us at: info@bpsbioscience.com
 Please visit our website at: www.bpsbioscience.com