



SZABO SCANDIC

Part of Europa Biosite

Produktinformation



Forschungsprodukte & Biochemikalien



Zellkultur & Verbrauchsmaterial



Diagnostik & molekulare Diagnostik



Laborgeräte & Service

Weitere Information auf den folgenden Seiten!
See the following pages for more information!



Lieferung & Zahlungsart

siehe unsere [Liefer- und Versandbedingungen](#)

Zuschläge

- Mindermengenzuschlag
- Trockeneiszuschlag
- Gefahrgutzuschlag
- Expressversand

SZABO-SCANDIC HandelsgmbH

Quellenstraße 110, A-1100 Wien

T. +43(0)1 489 3961-0

F. +43(0)1 489 3961-7

mail@szabo-scandic.com

www.szabo-scandic.com

[linkedin.com/company/szaboscandic](https://www.linkedin.com/company/szaboscandic) 

Data Sheet

PDE4D

Dog, recombinant, N-terminal GST-tag

Catalog #: 60056

Lot #: 130718-G1 **Conc.:** 0.32 mg/ml

Formulated in: 40 mM Tris pH 8, 110 mM NaCl, 2.2 mM KCl, 20% glycerol, 3 mM DTT

Stability: >6 months at -80°C. Avoid multiple freeze/thaw cycles.

References:

1. Lynex, C.N., *et al.*, *Cell Signal*. 2008 Dec;**20(12)**:2247-55.
2. Smith, C.J., *et al.*, *Circulation*. 1997 Nov 4;**96(9)**:36116-23.

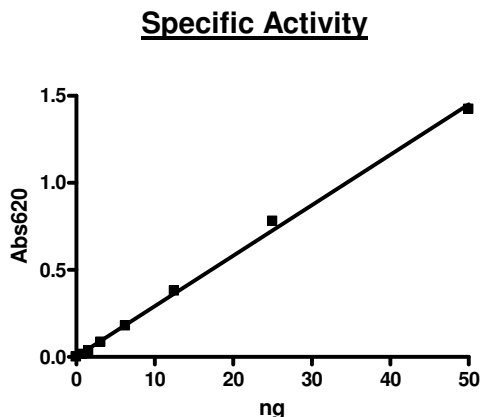
Description: Dog phosphodiesterase 4D (PDE4D) GenBank Accession No. XP_003433853, a.a. 2-679 (end), with N-terminal GST-tag, MW 104 kDa, expressed in Sf9 insect cells via a baculovirus expression system.

Specific Activity: 5,665 pmol/min/μg

Assay Description: One unit is defined as the amount of enzyme that will convert 1 pmole of 3', 5'-cAMP to 5'-AMP per min at 37°C. Assay conditions: 10 mM Tris-HCl, pH 7.4, 10 mM MgCl₂, 0.1 mg/ml BSA, 0.05% Tween-20, 200 μM cAMP, and serial dilutions of dPDE4D at 37°C for 20 min. Quantified by 5' nucleotidase cleaving the 5'-AMP product and releasing the phosphate group which is detected by Malachite Green Reagent.

Application: Useful for the study of enzyme kinetics, screening inhibitors, and selectivity profiling.

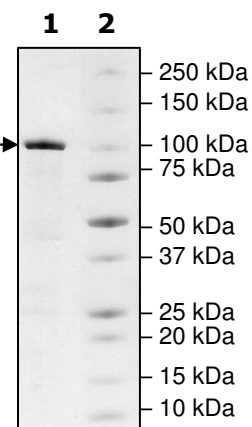
Quality Assurance



4-20% SDS-PAGE
Coomassie staining

Lane 1: 2 μg d-PDE4D
Lane 2: Protein Marker

MW: 104 kDa
Purity: ≥92%



OUR PRODUCTS ARE FOR RESEARCH USE ONLY. NOT FOR DIAGNOSTIC OR THERAPEUTIC USE.

To place your order, please contact us by Phone **1.858.829.3082** Fax **1.858.481.8694**
 Or you can Email us at: info@bpsbioscience.com
 Please visit our website at: www.bpsbioscience.com



6044 Cornerstone Court West, Suite E
San Diego, CA 92121
Tel: 1.858.829.3082
Fax: 1.858.481.8694
Email: info@bpsbioscience.com

Sequence:

MSPILGYWKIKGLVQPTRLLEYLEEKYEEHLYERDEGDKWRNKKFELGLEFPNLPYYID
GDVKLTQSMAIIRYIADKHNMLGGCPKERAIEISMLEGAVLDIRYGVSRAYSKDFETLKVDF
LSKLPPEMLKMFKDRLCHKTYLNGDHVTHPDFMLYDALDVVLYMDPMCLDAFPKLVCFKK
RIEAIQIDKYLKSSKYIAWPLQGQWQATFGGGDHLVPRGSGSGIQSIIMKPRSRSTSSLRT
TEAACFDVDNGTSAGRSPLDPMTSPGSGLILQANFVHSQRRESFLYRSDSDYDLSPKS
MSRNSSIADIHGDDLIVTPFAQVLASLRTVRNNFAALTNLQDRAPSKRSPMCNQPSINK
ATITEEAYQKLASETLEELDWCLEDQLETLQTRHSVSEMASNKFKRMLNRELTHLSEMS
RSGNQVSEYISNTFLDKQHEVEIPSPTQKEKEKRRPMSQISGVKMLMHSSSLTNSSIPR
FGVKTEQEDVLAKELEDVNWGLHVFRIAEELSGNRPLTVIMHTIFQERDLLKTFKIPVDT
LITYLMTLEDHYHADVAYHNNIHAADVQSTHVLLSTPALEAVFTDLEILAAIFASAIHDV
DHPGVSNQFLINTNSELALMYNDSSVLENHHLAVGFKLLQEENCDFQNLTKKQRQSLR
KMVIDIVLATDMSKHMNLLADLKT MVETKKVTSSGVLLLDNYSDRIQVLQNMVHCADLS
NPTKPLQLYRQWTD RIMEEFFRQGDRE RERERGMEISPMCDKHNASVEKSQVGFIDYIVHP
LWETWADLVHPDAQDILD TLEDNREWYQSTIPQSPSPAPDEQE EGRQGQTEKFQFELT
LEEDGESDTEKDSGSQVEEDTSCSDSKTLCTQDSESTEIPLDEQVEEETVGE EENSQPE
ACVIEDHSPDT

OUR PRODUCTS ARE FOR RESEARCH USE ONLY. NOT FOR DIAGNOSTIC OR THERAPEUTIC USE.

To place your order, please contact us by Phone **1.858.829.3082** Fax **1.858.481.8694**
Or you can Email us at: info@bpsbioscience.com
Please visit our website at: www.bpsbioscience.com