



# SZABO SCANDIC

Part of Europa Biosite

## Produktinformation



Forschungsprodukte & Biochemikalien



Zellkultur & Verbrauchsmaterial



Diagnostik & molekulare Diagnostik



Laborgeräte & Service

Weitere Information auf den folgenden Seiten!  
See the following pages for more information!



### Lieferung & Zahlungsart

siehe unsere [Liefer- und Versandbedingungen](#)

### Zuschläge

- Mindermengenzuschlag
- Trockeneiszuschlag
- Gefahrgutzuschlag
- Expressversand

### SZABO-SCANDIC HandelsgmbH

Quellenstraße 110, A-1100 Wien

T. +43(0)1 489 3961-0

F. +43(0)1 489 3961-7

[mail@szabo-scandic.com](mailto:mail@szabo-scandic.com)

[www.szabo-scandic.com](http://www.szabo-scandic.com)

[linkedin.com/company/szaboscandic](https://www.linkedin.com/company/szaboscandic) 

## Data Sheet

### PDE6C, GST-Tag (Mouse)

Mouse, Recombinant, N-terminal GST-tag

**Catalog #:** 60065

**Lot #:** 161206-2b

**Conc.:** 0.0063 mg/ml

**Formulated in:** 40 mM Tris-HCl, pH 8.0, 110 mM NaCl, 2.2 mM KCL, 10 mM Glutathione, 3 mM DTT and 20% Glycerol

**Stability:** At least 6 months at  $-80^{\circ}\text{C}$ . Avoid freeze/thaw cycles. Storing diluted enzyme is not recommended, if necessary use carrier protein (BSA 0.1 – 0.5%).

**References:**

1. Martinez S.E. *et al.*, *J Biol Chem.* 2008 Sep 19; **283(38)**:25913-9.
2. Stearns G. *et al.*, *J Neurosci.* 2007 Dec 12; **27(50)**:13866-74.

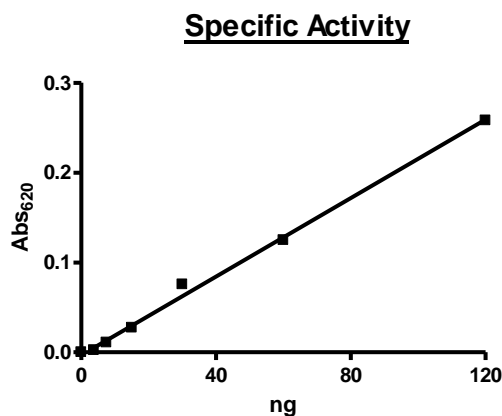
**Description:** Mouse PDE6C, GenBank Accession No. NM\_033614, 2-861 (end), with N-terminal GST tag, MW = 126 kDa, expressed in a Baculovirus infected Sf9 cell expression system.

**Specific Activity:**  $\geq 600$  pmole/min/ $\mu\text{g}$

One unit is defined as the amount of enzyme that will convert 1 pmole of 3', 5'-cGMP to 5'-GMP per min at  $37^{\circ}\text{C}$ . Assay condition: 10 mM Tris-HCl, pH 7.4, 10 mM  $\text{MgCl}_2$ , 0.1 mg/ml BSA, 0.05% Tween-20, 200  $\mu\text{M}$  cGMP, and serial dilutions of PDE6C at  $37^{\circ}\text{C}$  for 20 min. Quantified by 5' nucleotidase cleaving the 5'-AMP product and releasing the phosphate group which is detected by Malachite Green Reagent.

**Application:** Useful for the study of enzyme kinetics, screening inhibitors, and selectivity profiling.

## Quality Assurance

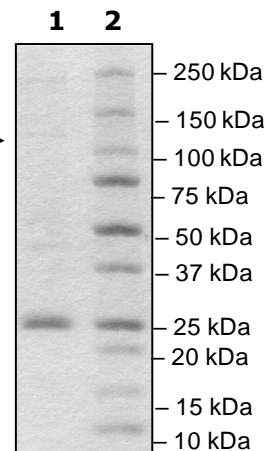


**4-20% SDS-PAGE  
Coomassie staining**

**Lane 1:** →  
 Mouse PDE6C  
**Lane 2:**  
 Protein Marker

**Purity:**  $\geq 2\%$

**MW:** 126 kDa



OUR PRODUCTS ARE FOR RESEARCH USE ONLY. NOT FOR DIAGNOSTIC OR THERAPEUTIC USE.

To place your order, please contact us by Phone **1.858.829.3082** Fax **1.858.481.8694**

Or you can Email us at: [info@bpsbioscience.com](mailto:info@bpsbioscience.com)

Please visit our website at: [www.bpsbioscience.com](http://www.bpsbioscience.com)