



# SZABO SCANDIC

Part of Europa Biosite

## Produktinformation



Forschungsprodukte & Biochemikalien



Zellkultur & Verbrauchsmaterial



Diagnostik & molekulare Diagnostik



Laborgeräte & Service

Weitere Information auf den folgenden Seiten!  
See the following pages for more information!



### Lieferung & Zahlungsart

siehe unsere [Liefer- und Versandbedingungen](#)

### Zuschläge

- Mindermengenzuschlag
- Trockeneiszuschlag
- Gefahrgutzuschlag
- Expressversand

### SZABO-SCANDIC HandelsgmbH

Quellenstraße 110, A-1100 Wien

T. +43(0)1 489 3961-0

F. +43(0)1 489 3961-7

[mail@szabo-scandic.com](mailto:mail@szabo-scandic.com)

[www.szabo-scandic.com](http://www.szabo-scandic.com)

[linkedin.com/company/szaboscandic](https://www.linkedin.com/company/szaboscandic) 

## Data Sheet

### PDE7A, GST-Tag

Human, Recombinant, N-terminal GST-tag

**Catalog #:** 60070

**Lot #:** 190729-2      **Conc.:** 0.36 mg/ml

**Formulated in:** 40 mM Tris-HCl, pH 8.0, 122 mM NaCl, 2.2 mM KCl, 0.04% Tween 20, 3 mM DTT, 20% Glycerol.

**Stability:** At least 6 months at  $-80^{\circ}\text{C}$ .  
Avoid freeze/thaw cycles.

#### References:

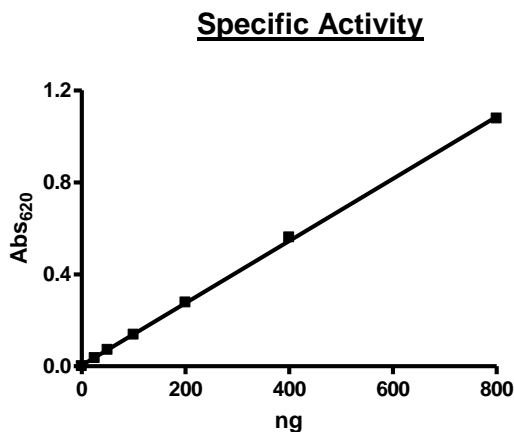
1. Wang, H., *et al.*, *J. Biol. Chem.* **280** (35), 30949-30955 (2005)
2. Torras-Llort, M. and Azorin, F., *Biochem. J.* **373** (PT 3), 835-843 (2003)

**Description:** Human PDE7A, isoform a, GenBank Accession No. NM\_002603, a.a. 122-end with N-terminal GST-tag, expressed in a Baculovirus-infected Sf9 cell expression system. MW=66 kDa.

**Specific Activity:**  $\geq 200$  pmol/min/ $\mu\text{g}$ .  
Assay conditions: One unit is defined as the amount of enzyme that will convert 1 pmole of 3', 5'-cAMP to 5'-AMP per min at  $37^{\circ}\text{C}$ .  
Assay condition: 10 mM Tris-HCl, pH 7.4, 10 mM MgCl<sub>2</sub>, 0.1 mg/ml BSA, 0.05% Tween-20, 200  $\mu\text{M}$  cAMP, and serial dilutions of PDE7A1 at  $37^{\circ}\text{C}$  for 20 min. Quantified by 5' nucleotidase cleaving the 5'-AMP product and releasing the phosphate group which is detected by Malachite Green Reagent.

**Application:** Useful for the study of enzyme kinetics, screening inhibitors, and selectivity profiling.

### Quality Assurance



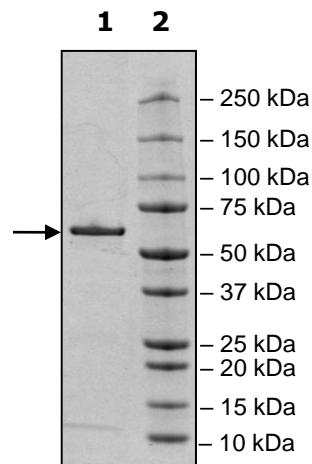
#### 4-20% SDS-PAGE Coomassie staining

**Lane 1:**  
2 $\mu\text{g}$  PDE7A

**Lane 2:**  
Protein Marker

**MW:** 66 kDa

**Purity:**  $\geq 90\%$



OUR PRODUCTS ARE FOR RESEARCH USE ONLY. NOT FOR DIAGNOSTIC OR THERAPEUTIC USE.

To place your order, please contact us by Phone **1.858.202.1401** Fax **1.858.481.8694**

Or you can Email us at: [info@bpsbioscience.com](mailto:info@bpsbioscience.com)

Please visit our website at: [www.bpsbioscience.com](http://www.bpsbioscience.com)