



SZABO SCANDIC

Part of Europa Biosite

Produktinformation



Forschungsprodukte & Biochemikalien



Zellkultur & Verbrauchsmaterial



Diagnostik & molekulare Diagnostik



Laborgeräte & Service

Weitere Information auf den folgenden Seiten!
See the following pages for more information!



Lieferung & Zahlungsart

siehe unsere [Liefer- und Versandbedingungen](#)

Zuschläge

- Mindermengenzuschlag
- Trockeneiszuschlag
- Gefahrgutzuschlag
- Expressversand

SZABO-SCANDIC HandelsgmbH

Quellenstraße 110, A-1100 Wien

T. +43(0)1 489 3961-0

F. +43(0)1 489 3961-7

mail@szabo-scandic.com

www.szabo-scandic.com

[linkedin.com/company/szaboscandic](https://www.linkedin.com/company/szaboscandic) 

Data Sheet

PLA2G12A

Human, recombinant, C-terminal His tag
Catalog #: 60092
Lot #: 111205-1 Conc.: 0.16mg/ml

Formulated in: 40 mM Tris-HCl, pH 8.0,
110 mM NaCl, 2.2 mM KCl, 200 mM
Imidazole, 20% Glycerol.

Stability: >6 months at -80°C

References:

1. Berg M., et al., Mol Cancer. **9:100**. (2010).
2. Kopec AK., et al., Toxicol Appl Pharmacol. **256(2):154-67**. (2011).

Description: Human PLA2G12A (GenBank Accession No. NM_030821), (a.a. 23-189(end)), with C-terminal His tag, MW=22 kDa, expressed in a mammalian cell expression system

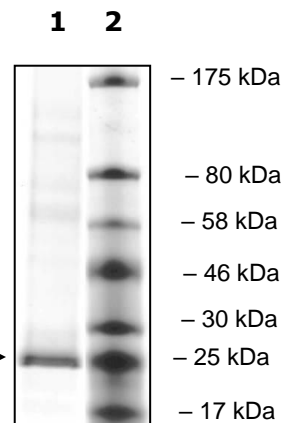
Application:
Suitable for binding studies, as an immunogen, and as a standard for Western blotting.

Quality Assurance

**10% SDS-PAGE
Coomassie
staining**

Lane 1:
2.8 µg PLA2G12A
Lane 2:
Protein Marker
BioLabs (#P7708L)

MW: 22 kDa
Purity: ≥80%



OUR PRODUCTS ARE FOR RESEARCH USE ONLY. NOT FOR DIAGNOSTIC OR THERAPEUTIC USE.

To place your order, please contact us by Phone **1.858.829.3082** Fax **1.858.481.8694**
Or you can Email us at: info@bpsbioscience.com
Please visit our website at: www.bpsbioscience.com