



SZABO SCANDIC

Part of Europa Biosite

Produktinformation



Forschungsprodukte & Biochemikalien



Zellkultur & Verbrauchsmaterial



Diagnostik & molekulare Diagnostik



Laborgeräte & Service

Weitere Information auf den folgenden Seiten!
See the following pages for more information!



Lieferung & Zahlungsart

siehe unsere [Liefer- und Versandbedingungen](#)

Zuschläge

- Mindermengenzuschlag
- Trockeneiszuschlag
- Gefahrgutzuschlag
- Expressversand

SZABO-SCANDIC HandelsgmbH

Quellenstraße 110, A-1100 Wien

T. +43(0)1 489 3961-0

F. +43(0)1 489 3961-7

mail@szabo-scandic.com

www.szabo-scandic.com

[linkedin.com/company/szaboscandic](https://www.linkedin.com/company/szaboscandic) 

Data Sheet

PLA2G4A

Human, recombinant, C-terminal Flag-His tag
Catalog #: 60094
Lot #: 130425-HF **Conc.:** 0.1 mg/ml

Formulated in: 40 mM Tris-HCl, pH 8.0,
 110 mM NaCl, 2.2 mM KCl, 80ug/ml Flag
 peptide, and 20% glycerol.

Stability: >6 months at -80°C

References:

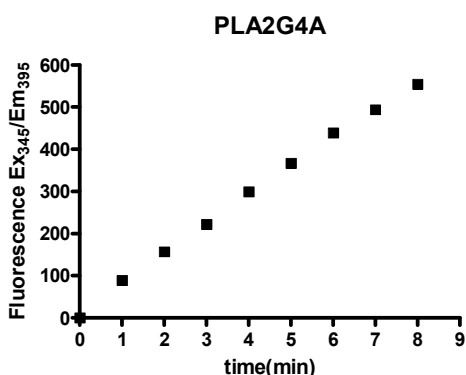
1. Chalimoniuk M. *Postepy Biochem.* 2012; **58(2)**:204-8.
2. Nadalin S, Giacometti J, *et al.*, *Prostaglandins Leukot Essent Fatty Acids.* 2013; **88(2)**:185-90.

Description: Human PLA2G4A, GenBank Accession No. NM_024420, a.a. 1-749 (end), with C-terminal Flag-His tag, MW=87 kDa, expressed in a baculovirus expression system.

Specific Activity: 57 pmol/min/μg.
Assay Conditions: PLA reaction was done using the 1-Hexadecanoyl-2-(1-prenedecanoyl)-sn-Glycerol-3-phosphocholine substrate. Enzyme reaction is conducted in 100 μl volume containing 50 mM Tris pH 8.0, 500 mM NaCl, 10 mM CaCl₂, 0.5 mg/ml BSA, 10 μM substrate and 200 ng PLA2G4A. Reaction progress was monitored at ex₃₄₅/em₃₉₅ for 10 minutes continuously at room temperature.

Application: Useful for the study of enzyme kinetics, screening inhibitors, and selectivity profiling.

Specific Activity



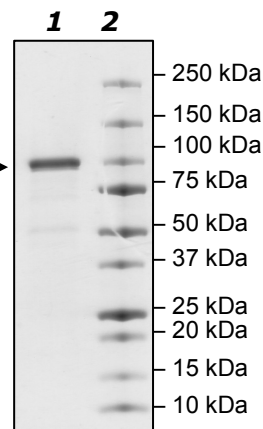
4-20% SDS-PAGE Coomassie staining

Lane 1:
 PLA2G4A
 (0.9ug loaded) →

Lane 2:
 Protein Marker

Purity: ≥87%

MW: 87 kDa



OUR PRODUCTS ARE FOR RESEARCH USE ONLY. NOT FOR DIAGNOSTIC OR THERAPEUTIC USE.

To place your order, please contact us by Phone **1.858.829.3082** Fax **1.858.481.8694**
 Or you can Email us at: info@bpsbioscience.com
 Please visit our website at: www.bpsbioscience.com



6044 Cornerstone Court West, Suite E
San Diego, CA 92121
Tel: 1.858.829.3082
Fax: 1.858.481.8694
Email: info@bpsbioscience.com

Sequence:

MSFIDPYQHIIVEHQYSHKFTVVVLRATKVTKGAFGDMLDTPDPYVELFISTTPDSRKRT
RHFNNDINPVWNETFEFILDPNQENVLEITLMDANYVMDET LGTATFTVSSMKVGEKKE
VPFIFNQVTEMVLEMSLEVCSPDLRFSMALCDQEKTFRQQRKEHIRESMKLLGPKN
SEGLHSARDVPVAILGSGGGFRAMVGFSGVMKALYESGILDCATYVAGLSGSTWYM
STLYSHPDFPEKGPEEINEELMKNVSHNPLLLLTPQKVCRYVESLWKKKSSGQPVTFTD
IFGMLIGETLIHNRMNNTLSSLKEKVNTAQCPPLFTCLHVKPDVSELMFADWVEFSPYE
IGMAKYGTFMAPDLFGSKFFMGTVVKYEEENPLHFLMGVWGSFAFSILFNRLVGVSGSQ
SRGSTMEELENITTKHIVSNDSSSDDESHEPKGTENEDAGSDYQSDNQASWIHRMI
MALVSDSALFNTREGRAGKVHNFMLGLNLNTSYPLSPLSDFATQDSFDDDELDAAVAD
PDEFERIYEPLDVKSKKIHVVDSGLTFNLPLYPLILRPQRGVDLIISFDFSARPSDSSPPFK
ELLLAEKWAKMNKLPFPKIDPYVFDREGLKECYVFKPKNPDMEKDCPTIIHFVLANINFR
KYKAPGVPRETEEEKEIADFDIFDDPESPFSTFNFQYPNQAFKRLHDLMHFNTLNNIDVI
KEAMVESIEYRRQNPSRCSVLSNVEARRFFNKEFLSKPKADYKDDDDKHHHHHH

OUR PRODUCTS ARE FOR RESEARCH USE ONLY. NOT FOR DIAGNOSTIC OR THERAPEUTIC USE.

To place your order, please contact us by Phone **1.858.829.3082** Fax **1.858.481.8694**
Or you can Email us at: info@bpsbioscience.com
Please visit our website at: www.bpsbioscience.com