



# SZABO SCANDIC

Part of Europa Biosite

## Produktinformation



Forschungsprodukte & Biochemikalien



Zellkultur & Verbrauchsmaterial



Diagnostik & molekulare Diagnostik



Laborgeräte & Service

Weitere Information auf den folgenden Seiten!  
See the following pages for more information!



### Lieferung & Zahlungsart

siehe unsere [Liefer- und Versandbedingungen](#)

### Zuschläge

- Mindermengenzuschlag
- Trockeneiszuschlag
- Gefahrgutzuschlag
- Expressversand

### SZABO-SCANDIC HandelsgmbH

Quellenstraße 110, A-1100 Wien

T. +43(0)1 489 3961-0

F. +43(0)1 489 3961-7

[mail@szabo-scandic.com](mailto:mail@szabo-scandic.com)

[www.szabo-scandic.com](http://www.szabo-scandic.com)

[linkedin.com/company/szaboscandic](https://www.linkedin.com/company/szaboscandic) 

## Data Sheet

### PDE10A2

Human, recombinant, N-terminal GST-tag

**Catalog #:** 60100

**Lot#:** 140507-G1

**Conc.:** 0.07 mg/ml

**Formulated in:** 40 mM Tris-HCl, pH 8.0,  
 110 mM NaCl, 2.2 mM KCl, 0.04% Tween,  
 3 mM DTT, and 20% glycerol.

**Stability:** >6 months at -80°C. *Avoid freeze/thaw cycles. Storing diluted enzyme is not recommended, if necessary, use carrier protein (BSA 0.1 – 0.5%).*

**References:**

1. Gross-Langenhoff, M., *et al.*, *J. Biol. Chem.* **281** (5), 2841-2846 (2006).
2. Frame, M., *et al.*, *Cell. Signal.* **13** (10), 735-741 (2001).

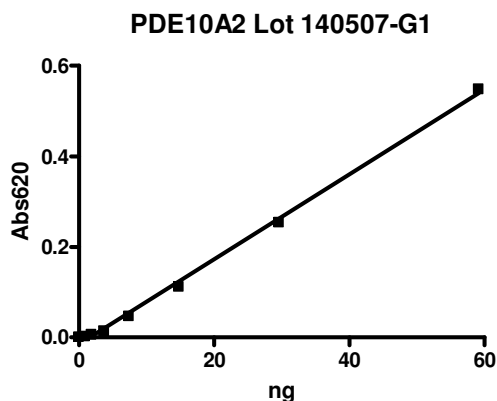
**Description:** Human PDE10A2 (GenBank Accession No. NM\_006661), full length with N-terminal GST-tag, MW=116 kDa, expressed in Sf9 cells via a Baculovirus expression system.

**Specific Activity:** 1648 pmol/min/μg. One unit is defined as the amount of enzyme that will convert 1 pmole of 3', 5'-cAMP to 5'-AMP per min at 37°C. Assay condition: 10 mM Tris-HCl, pH 7.4, 10 mM MgCl<sub>2</sub>, 0.1 mg/ml BSA, 0.05% Tween-20, 200 μM cAMP, and serial dilutions of PDE3A at 37°C for 20 min. Quantified by 5' nucleotidase cleaving the 5'-AMP product and releasing the phosphate group which is detected by Malachite Green Reagent.

**Application:** Useful for the study of enzyme kinetics, screening inhibitors, and selectivity profiling.

### Quality Assurance

Specific Activity

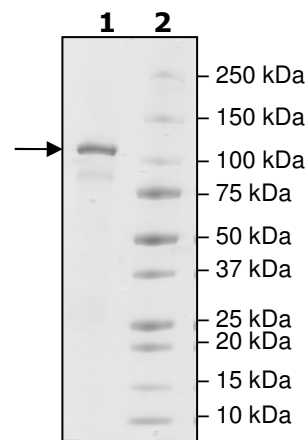


4-20% SDS-PAGE  
Coomassie staining

**Lane 1:**  
 2.2 μg PDE10A2

**Lane 2:**  
 Protein Marker

**MW:** 118 kDa  
**Purity:** ≥87%



OUR PRODUCTS ARE FOR RESEARCH USE ONLY. NOT FOR DIAGNOSTIC OR THERAPEUTIC USE.

To place your order, please contact us by Phone **1.858.829.3082** Fax **1.858.481.8694**

Or you can Email us at: [info@bpsbioscience.com](mailto:info@bpsbioscience.com)

Please visit our website at: [www.bpsbioscience.com](http://www.bpsbioscience.com)