



# SZABO SCANDIC

Part of Europa Biosite

## Produktinformation



Forschungsprodukte & Biochemikalien



Zellkultur & Verbrauchsmaterial



Diagnostik & molekulare Diagnostik



Laborgeräte & Service

Weitere Information auf den folgenden Seiten!  
See the following pages for more information!



### Lieferung & Zahlungsart

siehe unsere [Liefer- und Versandbedingungen](#)

### Zuschläge

- Mindermengenzuschlag
- Trockeneiszuschlag
- Gefahrgutzuschlag
- Expressversand

### SZABO-SCANDIC HandelsgmbH

Quellenstraße 110, A-1100 Wien

T. +43(0)1 489 3961-0

F. +43(0)1 489 3961-7

[mail@szabo-scandic.com](mailto:mail@szabo-scandic.com)

[www.szabo-scandic.com](http://www.szabo-scandic.com)

[linkedin.com/company/szaboscandic](https://www.linkedin.com/company/szaboscandic) 

## Data Sheet

### PDE10A (mouse)

Mouse, recombinant, N-terminal GST tag  
 Catalog#: 60101  
 Lot#: 130301-G      Conc.: 0.82 mg/ml

**Formulated in:** 40 mM Tris-HCl, pH 8.0,  
 110 mM NaCl, 0.04% Tween-20, 20%  
 glycerol, and 3 mM DTT.

**Stability:** >6 months at -80°C. Avoid  
 multiple freeze/thaw cycles.

**References:**

1. Siuciak, J.A. *et al.*, *Neuropharmacology* **51 (2)**, 374-385 (2006).
2. Hu, H. *et al.*, *Eur. J. Neurosci.* **20 (12)**, 3351-3363 (2004).

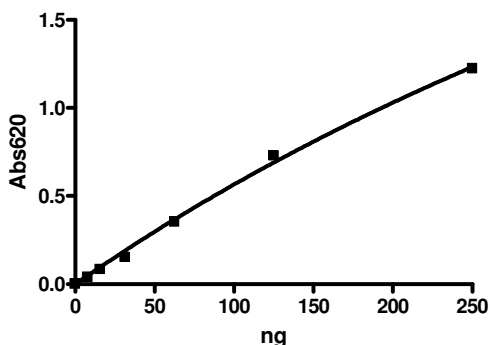
**Description:** Mouse PDE10A GenBank Accession No. NM\_011866), full length with N-terminal GST tag, MW=117 kDa, expressed in a Baculovirus infected Sf9 cell expression system.

**Specific Activity:** 1,029 pmol/min/μg. One unit is defined as the amount of enzyme that will convert 1 pmole of 3', 5'-cAMP to 5'-AMP per min at 37°C. Assay condition: 10 mM Tris-HCl, pH 7.4, 10 mM MgCl<sub>2</sub>, 0.1 mg/ml BSA, 0.05% Tween-20, 200 μM cAMP, and serial dilutions of PDE at 37°C for 20 min. Quantified by 5' nucleotidase cleaving the 5'-AMP product and releasing the phosphate group which is detected by Malachite Green Reagent.

**Application:** Useful for the study of enzyme kinetics, screening inhibitors, and selectivity profiling.

## Quality Assurance

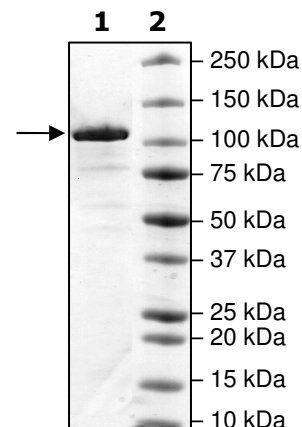
### PDE10A mouse Specific Activity



### 4-20% SDS-PAGE Coomassie staining

**Lane 1:**  
 2 μg mPDE10A  
 (mouse)  
**Lane 2:**  
 Protein Marker

**MW:** 117 kDa  
**Purity:** ≥92%



OUR PRODUCTS ARE FOR RESEARCH USE ONLY. NOT FOR DIAGNOSTIC OR THERAPEUTIC USE.

To place your order, please contact us by Phone **1.858.829.3082** Fax **1.858.481.8694**

Or you can Email us at: [info@bpsbioscience.com](mailto:info@bpsbioscience.com)

Please visit our website at: [www.bpsbioscience.com](http://www.bpsbioscience.com)