



SZABO SCANDIC

Part of Europa Biosite

Produktinformation



Forschungsprodukte & Biochemikalien



Zellkultur & Verbrauchsmaterial



Diagnostik & molekulare Diagnostik



Laborgeräte & Service

Weitere Information auf den folgenden Seiten!
See the following pages for more information!



Lieferung & Zahlungsart

siehe unsere [Liefer- und Versandbedingungen](#)

Zuschläge

- Mindermengenzuschlag
- Trockeneiszuschlag
- Gefahrgutzuschlag
- Expressversand

SZABO-SCANDIC HandelsgmbH

Quellenstraße 110, A-1100 Wien

T. +43(0)1 489 3961-0

F. +43(0)1 489 3961-7

mail@szabo-scandic.com

www.szabo-scandic.com

[linkedin.com/company/szaboscandic](https://www.linkedin.com/company/szaboscandic) 

Data Sheet

LOXL2, FLAG-tag

Human, recombinant, C-terminal Flag-tag

Catalog #: 60502

Lot #: 140402-G **Conc.:** 0.26 mg/ml

Formulated in: 40 mM Tris-HCl, pH 8.0, 110 mM NaCl, 2.2 mM KCl, 0.04% Tween-20, and 20% glycerol

Stability: At least 6 months at -80°C . *Avoid freeze/thaw cycles. Storing diluted protein is not recommended, if necessary, use carrier protein (BSA 0.1 – 0.5%).*

References:

1. Peng L. et al., *Carcinogenesis* **30** (10), 1660-1669 (2009).
2. Fujimoto E. and Tajima S. *J. Dermatol. Sci.* **55** (2), 91-98 (2009).

Description:

Human LOXL2 (GenBank Accession No. NM_002318), amino-acids 500-end, with C-terminal Flag tag MW = 32 kDa, expressed in a baculovirus-infected Sf9 cell expression system.

Application:

Useful for the study of enzyme kinetics, screening inhibitors, and selectivity profiling.

Quality Assurance

4-20% SDS-PAGE Coomassie staining

Lane 1:

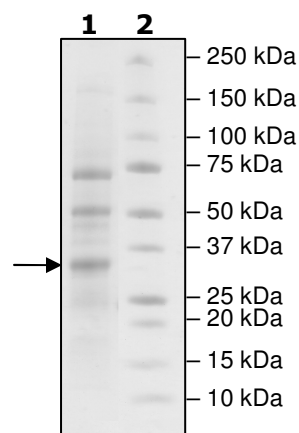
2 μg LOXL2

Lane 2:

Protein Marker

MW: 32 kDa

Purity: $\geq 34\%$



OUR PRODUCTS ARE FOR RESEARCH USE ONLY. NOT FOR DIAGNOSTIC OR THERAPEUTIC USE.

To place your order, please contact us by Phone **1.858.829.3082**, Fax **1.858.481.8694**

Or you can Email us at: info@bpsbioscience.com

Please visit our website at: www.bpsbioscience.com