



SZABO SCANDIC

Part of Europa Biosite

Produktinformation



Forschungsprodukte & Biochemikalien



Zellkultur & Verbrauchsmaterial



Diagnostik & molekulare Diagnostik



Laborgeräte & Service

Weitere Information auf den folgenden Seiten!
See the following pages for more information!



Lieferung & Zahlungsart

siehe unsere [Liefer- und Versandbedingungen](#)

Zuschläge

- Mindermengenzuschlag
- Trockeneiszuschlag
- Gefahrgutzuschlag
- Expressversand

SZABO-SCANDIC HandelsgmbH

Quellenstraße 110, A-1100 Wien

T. +43(0)1 489 3961-0

F. +43(0)1 489 3961-7

mail@szabo-scandic.com

www.szabo-scandic.com

[linkedin.com/company/szaboscandic](https://www.linkedin.com/company/szaboscandic) 

Data Sheet

LOXL2

Human, recombinant, C-terminal His-tag

Catalog #: 60512

Lot #: 120213 **Conc.:** 0.23 mg/ml

Description: Human lysyl oxidase-like 2, or LOXL2, GenBank Accession No. NM_002318 a.a. 26 – 774 (end), with C-terminal His tag, MW = 85 kDa, expressed in FreeStyle 293-F cells.

Formulated in: 40 mM Tris-HCl, pH 8.0, 110 mM NaCl, 2.2 mM KCl, 200 mM Imidazole, 20% Glycerol.

Stability: At least 6 months at –80°C. Avoid freeze/thaw cycles. Storing diluted protein is not recommended, if necessary, use carrier protein (BSA 0.1 – 0.5%)

References:

1. Peng L. et al., *Carcinogenesis* **30 (10)**, 1660-1669 (2009).
2. Fujimoto E. and Tajima S. *J. Dermatol. Sci.* **55 (2)**, 91-98 (2009).

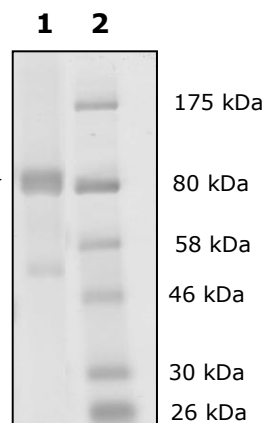
Quality Assurance

4-20% SDS-PAGE Coomassie staining

Lane 1:
2.7 µg LOXL2

Lane 2:
Protein Marker →

MW: 85 kDa
Purity: ≥85%



OUR PRODUCTS ARE FOR RESEARCH USE ONLY. NOT FOR DIAGNOSTIC OR THERAPEUTIC USE.

To place your order, please contact us by Phone **1.858.202.1401**, Fax **1.858.481.8694**

Or you can Email us at: info@bpsbioscience.com
Please visit our website at: www.bpsbioscience.com