



SZABO SCANDIC

Part of Europa Biosite

Produktinformation



Forschungsprodukte & Biochemikalien



Zellkultur & Verbrauchsmaterial



Diagnostik & molekulare Diagnostik



Laborgeräte & Service

Weitere Information auf den folgenden Seiten!
See the following pages for more information!



Lieferung & Zahlungsart

siehe unsere [Liefer- und Versandbedingungen](#)

Zuschläge

- Mindermengenzuschlag
- Trockeneiszuschlag
- Gefahrgutzuschlag
- Expressversand

SZABO-SCANDIC HandelsgmbH

Quellenstraße 110, A-1100 Wien

T. +43(0)1 489 3961-0

F. +43(0)1 489 3961-7

mail@szabo-scandic.com

www.szabo-scandic.com

[linkedin.com/company/szaboscandic](https://www.linkedin.com/company/szaboscandic) 

Data Sheet

LOXL4 (*E. coli*-derived)

Human, Recombinant, C-terminal His-tag

Catalog #: 60524

Lot #: 111007 **Conc.:** 0.33 mg/ml

Formulated in: 9 mM Na₂HPO₄/KH₂ PO₄
pH 7.4, 124 mM KCl, 2.4 mM KCl and
10% glycerol

Stability: At least 6 months at -80°C.
*Avoid freeze/thaw cycles. Storing diluted
enzyme is not recommended, if
necessary, use carrier protein (BSA 0.1
– 0.5%).*

References:

1. Gorogh, T., *et al.*, *Int. J. Oncol.* 2008;
33(5): 1091-1098.
2. Kim, D.J., *et al.*, *Biochem. Biophys.
Res. Commun.* 2008; **4:** 521-527.

Description: Human Lysyl oxidase homolog 4 (LOXL4), also known as Lysyl oxidase-related protein C (LOXC). GenBank Accession No. NM_032211, a.a. 570-756(end) with a C-terminal His-tag expressed in an *E. coli* expression system.

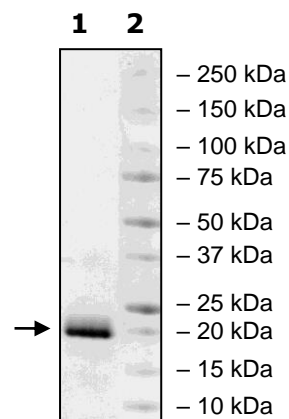
Application: Useful for the study of enzyme kinetics, screening inhibitors, and selectivity profiling.

Quality Assurance

6-20% SDS-PAGE Coomassie staining

Lane 1:
2 µg LOXL4
Lane 2:
Protein Marker

Purity: ≥90%
MW: 23 kDa



OUR PRODUCTS ARE FOR RESEARCH USE ONLY. NOT FOR DIAGNOSTIC OR THERAPEUTIC USE.

To place your order, please contact us by Phone **1.858.829.3082** Fax **1.858.481.8694**

Or you can Email us at: info@bpsbioscience.com

Please visit our website at: www.bpsbioscience.com