



SZABO SCANDIC

Part of Europa Biosite

Produktinformation



Forschungsprodukte & Biochemikalien



Zellkultur & Verbrauchsmaterial



Diagnostik & molekulare Diagnostik



Laborgeräte & Service

Weitere Information auf den folgenden Seiten!
See the following pages for more information!



Lieferung & Zahlungsart

siehe unsere [Liefer- und Versandbedingungen](#)

Zuschläge

- Mindermengenzuschlag
- Trockeneiszuschlag
- Gefahrgutzuschlag
- Expressversand

SZABO-SCANDIC HandelsgmbH

Quellenstraße 110, A-1100 Wien

T. +43(0)1 489 3961-0

F. +43(0)1 489 3961-7

mail@szabo-scandic.com

www.szabo-scandic.com

[linkedin.com/company/szaboscandic](https://www.linkedin.com/company/szaboscandic) 

Data Sheet

Activated Protein C (PROC)

Human, recombinant, C-terminal His tag

Catalog #: 70019

Lot#: 130620-E1D **Conc.:** 0.77 mg/ml

Formulated in: 50 mM Tris-HCl, pH 8.0,
 138 mM NaCl, and 2.7 mM KCl

Stability: >6 months at -80 °C

References:

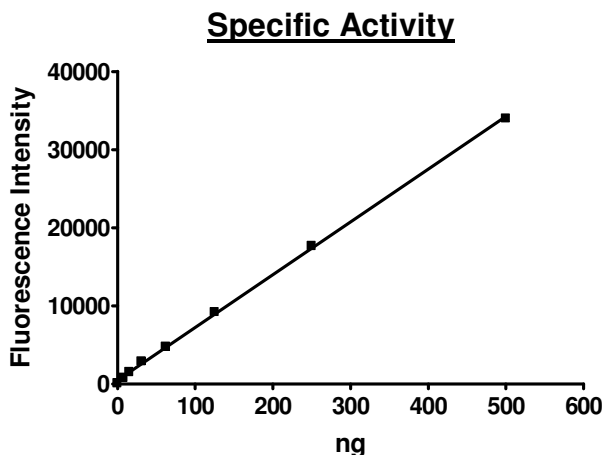
1. Wagener, G., *et al.*, *Transplant. Proc.* 2012;**44(5)**:1336-1340.
2. Luo, L., *et al.*, *Mediators Inflamm.* 2012;**2012**:485279.

Description: Human activated protein C, also known as PROC, APC, or active coagulation factor XIV, (GenBank Accession No. NM_000312), amino acids 1 – 461 (end) with C-terminal His tag, expressed in a HEK293 cell expression system. Note: Protein is secreted and converted to the active form with disulfide link (light chain a.a. 43-199; heavy chain a.a. 212-461). The signal peptide (1-32), propeptide (a.a. 33-42), and activation peptide (200-211) are cleaved. MW = ~60 kD, ~42 kD, ~20 kD under reducing conditions.

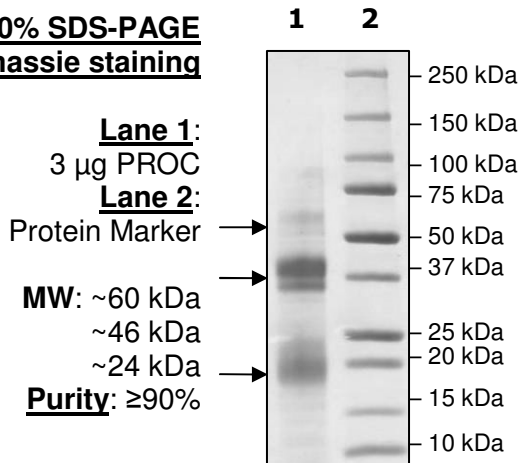
Specific Activity: 90 pmol/min/μg
 Assay conditions: 50 mM Tris-HCl, pH 8.5, 150 mM NaCl, 10 mM CaCl₂, 0.01% Brij35, 100 μM substrate, and various amounts of Activated Protein C. Incubate for 10 minutes at room temperature. Fluorescence intensity is measured at exc380/em460.

Application: Useful for the study of enzyme kinetics, screening inhibitors, and selectivity profiling.

Quality Assurance



4-20% SDS-PAGE
Coomassie staining



OUR PRODUCTS ARE FOR RESEARCH USE ONLY. NOT FOR DIAGNOSTIC OR THERAPEUTIC USE.

To place your order, please contact us by Phone **1.858.829.3082** Fax **1.858.481.8694**
 Or you can Email us at: info@bpsbioscience.com
 Please visit our website at: www.bpsbioscience.com



6044 Cornerstone Court W, Ste E
San Diego, CA 92121
Tel: 1.858.829.3082
Fax: 1.858.481.8694
Email: info@bpsbioscience.com

Sequence:

Light chain

**ANSFLEELRHSSLERECIEEICDFEEAKEIFQNVDLAFWSKHVDGDQCLVLPLEHP
CASLCCGHGTCIDGIGSFSCDCRSGWEGRFCQREVSFLNCSLDNGGCTHYCLEEVG
WRRCSAPGYKLGDDLLQCHPAVKFPCGRPWKRMKKRSHLKR**

Heavy chain

**LIDGKMTRRGDSPWQVLLDSKKKLACGAVLIHPSWVLTAAHCMDESKLLVRLGEY
DLRRWEKWELDLDIKEVFVHPNYSKSTTDNDIALHQAQATLSQTIVPICLPDGLAE
RELNQAGQETLVTGWGYHSSREKEAKRNRTFVLNFIKIPVPHNECSEVMSNMVSEN
MLCAGILGDRQDACEGDSGGPMVASFHGTWFLVGLVSWGEGCGLLHNYGVYTKVS
RYLDWIHGHIRDKEAPQKSWAPHHHHHHHHHH**

OUR PRODUCTS ARE FOR RESEARCH USE ONLY. NOT FOR DIAGNOSTIC OR THERAPEUTIC USE.

To place your order, please contact us by Phone **1.858.829.3082** Fax **1.858.481.8694**
Or you can Email us at: info@bpsbioscience.com
Please visit our website at: www.bpsbioscience.com