



SZABO SCANDIC

Part of Europa Biosite

Produktinformation



Forschungsprodukte & Biochemikalien



Zellkultur & Verbrauchsmaterial



Diagnostik & molekulare Diagnostik



Laborgeräte & Service

Weitere Information auf den folgenden Seiten!
See the following pages for more information!



Lieferung & Zahlungsart

siehe unsere [Liefer- und Versandbedingungen](#)

Zuschläge

- Mindermengenzuschlag
- Trockeneiszuschlag
- Gefahrgutzuschlag
- Expressversand

SZABO-SCANDIC HandelsgmbH

Quellenstraße 110, A-1100 Wien

T. +43(0)1 489 3961-0

F. +43(0)1 489 3961-7

mail@szabo-scandic.com

www.szabo-scandic.com

[linkedin.com/company/szaboscandic](https://www.linkedin.com/company/szaboscandic) 

Data Sheet

LDHB (Variant 1)

Human, Recombinant, with N-terminal His-tag

Catalog #: 71078

Lot#: 171222 **Conc.:** 0.5 mg/ml

Formulated in: 40mM Tris, pH8.0, 110mM NaCl, 2.2mM KCl, 0.04% Tween 20, and 20% glycerol.

Stability: At least 6 months at -80°C.

References:

1. McClelland, M.L., *et al. Clin. Cancer Res.* 2013. 15;**19(4)**:773-84.
2. Zha, X., *et al. Cancer Res.* 2011. 1;**71(1)**:13-8.

Description: Human Lactate dehydrogenase B (LDHB), GenBank Accession No. NM_002300, full length [2-334(end)] with N-terminal His-tag, MW= 38 kDa, expressed in an *E. coli* expression system.

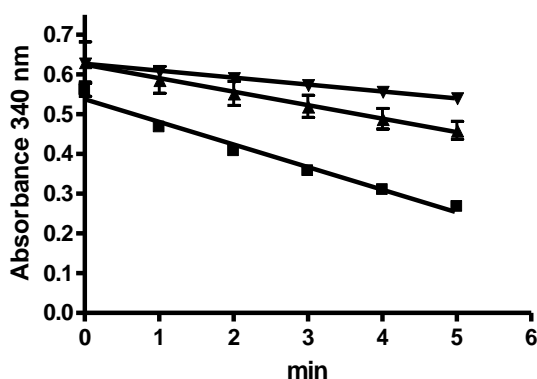
Specific Activity: 350 pmol/min/ug

Assay Conditions: The reaction mixture contained 100 mM Tris, pH7.4, 2 mM sodium pyruvate, 0.2 mM β-NADH, 0.02% BSA, and various amount of LDH in a volume of 200 μl. Reactions were initiated with the addition of LDH, and the decrease in NADH absorbance at 340 nm were continuously monitored at 30 °C for 5 min. Molar extinction coefficient of NADH is 6,200M⁻¹ cm⁻¹.

Application: Useful for the study of enzyme kinetics, screening inhibitors, and selectivity profiling.

Quality Assurance

Specific Activity

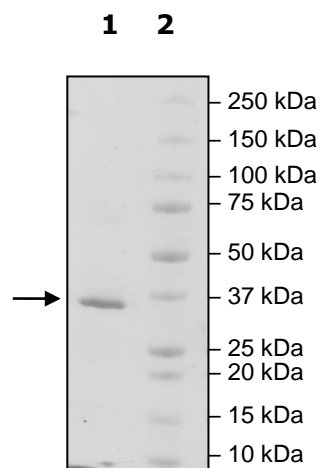


4-20% SDS-PAGE Coomassie staining

- 25 ng
- ▲ 12.5 ng
- ▼ 6.25 ng

Lane 1:
3μgLDHB
Lane 2:
Protein Marker

MW: 38 kDa
Purity: ≥90%



OUR PRODUCTS ARE FOR RESEARCH USE ONLY. NOT FOR DIAGNOSTIC OR THERAPEUTIC USE.

To place your order, please contact us by Phone **1.858.829.3082** Fax **1.858.481.8694**

Or you can Email us at: info@bpsbioscience.com

Please visit our website at: www.bpsbioscience.com



6042 Cornerstone Court West, Suite B
San Diego, CA 92121
Tel: 1.858.829.3082
Fax: 1.858.481.8694
Email: info@bpsbioscience.com

Protein Sequence:

MHHHHHATLKEKLIAPVAEEEEATVPNNKITVVGVGQVGMACAISILGKSLADELALVDV
LEDKLGEMMDLQHGSLFLQTPKIVADKDYSVTANSKIVVVTAGVRQQEGESRLNLVQ
RNVNVFKFIIPQIVKYSPDCIIIVVSNPVDILTYVTWKLGLPKHRVIGSGCNLDSARFRYL
MAEKLGIHPSSCHGWILGEHGDSSVAVWSGVNVAGVSLQELNPEMGTDNDSENWKE
VHKMVESAYEVIKLKGTYNWAIGLSVADLIESMLKNLSRIHPVSTMVKGMYGIENEVFL
SLPCILNARGLTSVINQKLKDDEVAQLKKSADTLWDIQKDLKDL

OUR PRODUCTS ARE FOR RESEARCH USE ONLY. NOT FOR DIAGNOSTIC OR THERAPEUTIC USE.

To place your order, please contact us by Phone **1.858.829.3082** Fax **1.858.481.8694**
Or you can Email us at: info@bpsbioscience.com
Please visit our website at: www.bpsbioscience.com