



SZABO SCANDIC

Part of Europa Biosite

Produktinformation



Forschungsprodukte & Biochemikalien



Zellkultur & Verbrauchsmaterial



Diagnostik & molekulare Diagnostik



Laborgeräte & Service

Weitere Information auf den folgenden Seiten!
See the following pages for more information!



Lieferung & Zahlungsart

siehe unsere [Liefer- und Versandbedingungen](#)

Zuschläge

- Mindermengenzuschlag
- Trockeneiszuschlag
- Gefahrgutzuschlag
- Expressversand

SZABO-SCANDIC HandelsgmbH

Quellenstraße 110, A-1100 Wien

T. +43(0)1 489 3961-0

F. +43(0)1 489 3961-7

mail@szabo-scandic.com

www.szabo-scandic.com

[linkedin.com/company/szaboscandic](https://www.linkedin.com/company/szaboscandic) 

Data Sheet

LDHA, His-Tag

Human, Recombinant, with N-terminal His-tag

Catalog #: 71081

Lot#: 171222 **Conc.:** 1.0 mg/ml

Formulated in: 40mM Tris, pH8.0, 110mM NaCl, 2.2mM KCl, 0.04% Tween 20, and 20% glycerol.

Stability: At least 6 months at -80°C.

References:

1. Rong Y., *et al.* Tumour Biol. 2013. **34(3):**1523-30.
2. Tang H., *et al.* Biol Reprod. 2013. **88(4):**96.

Description:

Human Lactate dehydrogenase A (LDHA), GenBank Accession No. NM_005566), full length [2-332(end)] with N-terminal His-tag, MW= 38 kDa, expressed in an E.coli expression system.

Specific Activity: 100 pmole/min/μg

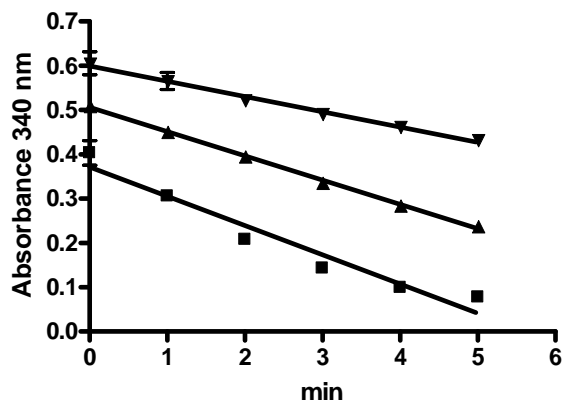
Assay conditions: The reaction mixture contained 100 mM Tris, pH7.4, 2 mM sodium pyruvate, 0.2 mM β-NADH, 0.02% BSA, and various amount of LDH in a volume of 200 μl. Reactions were initiated with the addition of LDH, and the decrease in NADH absorbance at 340 nm were continuously monitored at 30 °C for 5 min. Molar extinction coefficient of NADH is 6,200M⁻¹ cm⁻¹.

Application:

Useful for the study of enzyme kinetics, screening inhibitors, and selectivity profiling.

Quality Assurance

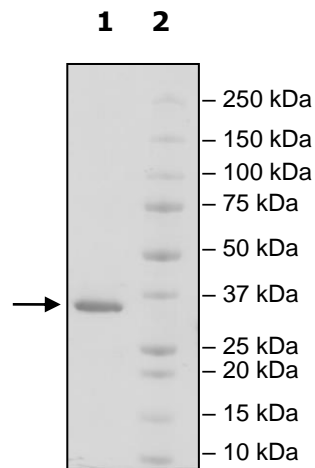
Specific Activity



**4-20% SDS-PAGE
Coomassie staining**

Lane 1: 3μgLDHA
Lane 2: Protein Marker

MW: 38 kDa
Purity: ≥90%



OUR PRODUCTS ARE FOR RESEARCH USE ONLY. NOT FOR DIAGNOSTIC OR THERAPEUTIC USE.

To place your order, please contact us by Phone **1.858.829.3082** Fax **1.858.481.8694**
 Or you can Email us at: info@bpsbioscience.com
 Please visit our website at: www.bpsbioscience.com



6044 Cornerstone Court West, Suite E
San Diego, CA 92121
Tel: 1.858.829.3082
Fax: 1.858.481.8694
Email: info@bpsbioscience.com

Protein Sequence:

MHHHHHHATLKDQLIYNLLKEEQTPQNKITVVGAVGMACAISILMKDLADELALVDVI
EDKLGEMMDLQHGSLFLRTPKIVSGKDYNVTANSKLVIIITAGARQQEGESRLNLVQRN
VNIFKFIIPNVVKYSPNCKLLIVSNPVDILTYVAWKISGFPKNRVIGSGCNLDSARFRYLM
GERLGVHPLSCHGWVLGEHGDSSVPVWSGMNVAGVSLKTLHPDLGTDKDKEQWKEV
HKQVVESAYEVIKLGYSWAIGLSVADLAESIMKNLRRVHPVSTMIKGLYGIKDDVFLS
VPCILGQNGISDLVKVTLTSEEEARLKKSADTLWGIQKELQF

OUR PRODUCTS ARE FOR RESEARCH USE ONLY. NOT FOR DIAGNOSTIC OR THERAPEUTIC USE.

To place your order, please contact us by Phone **1.858.829.3082** Fax **1.858.481.8694**
Or you can Email us at: info@bpsbioscience.com
Please visit our website at: www.bpsbioscience.com